



Editor's choice
Scan to access more
free content

ORIGINAL ARTICLE

Heart failure in pregnant women with cardiac disease: data from the ROPAC

Titia P E Ruys,¹ Jolien W Roos-Hesselink,¹ Roger Hall,² Maria T Subirana-Domènech,³ Jennifer Grando-Ting,⁴ Mette Estensen,⁵ Roberto Crepaz,⁶ Vlasta Fesslova,⁷ Michelle Gurvitz,⁸ Julie De Backer,⁹ Mark R Johnson,¹⁰ Petronella G Pieper¹¹

► Additional material is published online only. To view please visit the journal online (<http://dx.doi.org/10.1136/heartjnl-2013-304888>).

¹Erasmus Medical Center, Rotterdam, The Netherlands

²Norfolk & Norwich University NHS Hospital, Norwich, UK

³Hospital de Sant Pau, Barcelona, Spain

⁴Milton S. Hershey Medical Center, Hershey, Pennsylvania, USA

⁵Oslo University Hospital, Rikshospitalet, Oslo, Norway

⁶Regional Hospital of Bolzano, Bolzano, Italy

⁷Policlinico San Donato IRCCS, Milano, Italy

⁸University of Washington, Seattle, Washington, USA

⁹Ghent University Hospital, Ghent, Belgium

¹⁰Imperial College London, Chelsea and Westminster Hospital, London, UK

¹¹University of Groningen, University Medical Center Groningen, Groningen, The Netherlands

Correspondence to

Dr P G Pieper, Department of Cardiology, University Medical Centre Groningen, University of Groningen, PO Box 30.001, Groningen 9700 RB, The Netherlands; p.g.pieper@umcg.nl

Received 4 September 2013

Revised 2 October 2013

Accepted 3 October 2013

Published Online First

29 November 2013



► <http://dx.doi.org/10.1136/heartjnl-2013-304986>

To cite: Ruys TPE, Roos-Hesselink JW, Hall R, et al. *Heart* 2014;**100**:231–238.

ABSTRACT

Objective Heart failure (HF) is one of the most important complications in pregnant women with heart disease, causing maternal and fetal mortality and morbidity.

Methods This is an international observational registry of patients with structural heart disease during pregnancy. Sixty hospitals in 28 countries enrolled 1321 women between 2007 and 2011. Pregnant women with valvular heart disease, congenital heart disease, ischaemic heart disease, or cardiomyopathy could be included. Main outcome measures were onset and predictors of HF and maternal and fetal death.

Results In total, 173 (13.1%) of the 1321 patients developed HF, making HF the most common major cardiovascular complication during pregnancy. Baseline parameters associated with HF were New York Heart Association class ≥ 3 , signs of HF, WHO category ≥ 3 , cardiomyopathy or pulmonary hypertension. HF occurred at a median time of 31 weeks gestation (IQR 23–40) with the highest incidence at the end of the second trimester (34%) or peripartum (31%). Maternal mortality was higher in patients with HF (4.8% in patients with HF and 0.5% in those without HF $p < 0.001$). Pre-eclampsia was strongly related to HF (OR 7.1, 95% CI 3.9 to 13.2, $p < 0.001$). Fetal death and the incidence of preterm birth were higher in women with HF compared to women without HF (4.6% vs 1.2%, $p = 0.001$; and 30% vs 13%, $p = 0.001$).

Conclusions HF was the most common complication during pregnancy, and occurred typically at the end of the second trimester, or after birth. It was most common in women with cardiomyopathy or pulmonary hypertension and was strongly associated with pre-eclampsia and an adverse maternal and perinatal outcome.

OBJECTIVES

Pregnancy may be considered as a physiological stress test, revealing latent medical conditions such as hypertension and diabetes.¹ This is particularly true for women with underlying heart disease, where pregnancy may cause a deterioration of a known heart condition or precipitate the presentation of an undiagnosed heart problem.¹ During pregnancy, cardiac output increases by 30–50%, where increase in plasma volume leads to increase in stroke volume and heart rate.² The increase in cardiac workload may precipitate heart failure

(HF),^{3–5} which is associated with significant maternal and fetal morbidity and mortality.⁶

Despite the poor prognosis associated with the diagnosis of HF during pregnancy, there is very little information in the literature on the subject. The onset of HF during pregnancy may differ according to the underlying heart disease, and may be related to the physiological changes during pregnancy, but data in the literature are scarce. Peripartum cardiomyopathy is a pregnancy-specific type of cardiomyopathy, where HF by definition occurs towards the end of pregnancy or in the months following delivery.⁷ In pregnant women with valvular heart disease (VHD), HF has been described both during pregnancy and after delivery.^{8–10} Labour and delivery are considered a particularly high-risk period because of cardiac stress and changes in cardiac output caused by pain, anxiety and exertion, uterine contractions, bleeding, anaesthesia, autotransfusion from the involuting uterus, and resorption of oedema.^{6 8–13}

In pregnant women with underlying heart disease, the risk of developing complications depends on the type and severity of cardiac disease.^{2 5 9 14–19} Large cohort studies have focused on prediction of a composite endpoint of cardiac events (arrhythmia, HF and other cardiovascular complications).^{2–4} This approach fails to distinguish between the relatively easily managed complications, such as most supraventricular arrhythmias, and the more severe complications, such as HF. Therefore, in this study, we focus on HF during pregnancy. We have investigated the timing of the diagnosis of HF, its associations and the factors which predict its occurrence in a large cohort of pregnant women with structural or ischaemic heart disease (IHD).

METHODS

Study design

The Registry On Pregnancy And Cardiac disease (ROPAC) was established in 2007 (see online appendix for more information). Sixty hospitals in 28 countries enrolled 1321 pregnant women with structural heart disease (valvular or congenital heart disease (CHD) or cardiomyopathy) or IHD. Enrolled patients underwent pregnancy sometime between 2007 and June 2011.

Data

The study protocol with definitions and the first results of this registry were published previously.¹⁹

HF was defined in these patients with various underlying heart diseases, according to ACC/AHA guidelines, as a clinical syndrome that is characterised by specific symptoms (dyspnea and fatigue) in the medical history and signs (of fluid retention, such as oedema, rales) on the physical examination as judged by the treating cardiologist.²⁰ The HF episode was only registered when signs or symptoms of HF were present which required new treatment, change of treatment or hospital admission. Pulmonary hypertension was judged as such by the including cardiologist. Countries were divided into developed or developing according to the International Monetary Fund Classification.²¹ Other definitions have been described in the overview paper which has been previously published.¹⁹ Onset of HF in terms of gestational age was calculated using the expected term date. When a patient developed HF after delivery, we described the timing as the number of weeks after delivery. In patients with HF during and postpregnancy, only the first manifestation of HF was used to compute the time of HF. For the calculation of median time of HF per diagnosis, we added the number of weeks after delivery to 40 weeks when HF occurred after delivery. For example, HF occurring 6 weeks after delivery in a woman delivered at 38 weeks is calculated as HF at 46 weeks.

We stratified the patients into four risk groups using a modified WHO risk classification for pregnant women with cardiac disease. Dependent on diagnosis and severity of disease, risk classification ranges from class I (low risk), to class IV (contraindication for pregnancy).^{5, 22} CHD patients were further classified by complexity of heart disease, according to a generally accepted classification.²³ Diseases that were not accounted for in this classification were scored by two authors (TPER and PGP). Additionally, the type of heart lesion was classified into left-sided lesions (such as aortic valve disease, mitral valve disease and most cardiomyopathies), right-sided lesions (such as Ebstein's anomaly, tetralogy of Fallot, pulmonary stenosis) and shunt lesions (such as atrial or ventricular septal defects).

The primary study end point was HF, and secondary study endpoints included: birth weight, fetal death (defined as fetal death after 22 weeks of pregnancy or birth weight 500 g), neonatal death, low birth weight (<2500 g), premature birth (<37 weeks of gestation) or Apgar score <7. Other complications collected included symptomatic supraventricular tachycardia (either paroxysmal or permanent), symptomatic ventricular arrhythmias (excluding ventricular extra beats), thromboembolic complications (including mechanical valve thrombosis, venous thromboembolism and cerebrovascular event) and bleeding complications (requiring transfusion). This study focuses on HF. Data on follow-up was complete in 96% of patients. More detailed information on maternal and fetal outcome, in general, can be found in the overview article.¹⁹

Statistical methods

Categorical data are presented as frequencies (numbers) and percentages. One-sample Kolmogorov-Smirnov tests and histograms were used to check normality of continuous data. Normally distributed continuous data are presented as mean values \pm one SD, whereas data which were not normally distributed were presented as medians with IQR. Differences in categorical data between independent patient groups were compared by χ^2 tests. Fisher's exact tests were applied if any expected cell count was less than five. Differences in continuous data between independent patient groups were compared by Student *t* tests. Adjusted birth weight was calculated using a linear regression, and was adjusted for gestational age, smoking, fetal sex,

maternal age, diabetes and pre-eclampsia. Univariable logistic regression analysis was performed to identify baseline patient characteristics (before pregnancy) associated with HF. The following baseline variables were assessed: CHD, VHD, cardiomyopathy, IHD, right-sided lesion, left-sided lesion, shunt lesion, NYHA (New York Heart Association) class ≥ 3 , modified WHO class ≥ 3 , atrial fibrillation (either paroxysmal or permanent), nulliparity, hypertension (hypertension (systolic >140 mm Hg or diastolic >90 mm Hg before pregnancy or the use of antihypertensive treatment), smoking (before and during pregnancy), developing versus developed countries (according to International Monetary Fund classification), signs of HF, pulmonary hypertension, mechanical valves and the use of any medication before pregnancy. Echocardiographic data (fractional shortening <30% or systolic ventricular function (qualitatively scored with eyeballing) normal/moderate/severely impaired: systemic or pulmonary) were used only in the univariable regression, since adequate data were only available in 259 patients. Parameters developing during pregnancy, such as diabetes and pre-eclampsia were not taken into account in this univariable and multivariable analysis, since the goal was to construct a pre-pregnancy risk model. We excluded patients with a first manifestation of peripartum cardiomyopathy in the current pregnancy for the univariable and multivariable analysis only, since we intended to predict the occurrence of HF from baseline data in women with known structural or IHD, while women with a first manifestation of peripartum cardiomyopathy were by definition healthy at baseline. Variables that were associated with an increased incidence of the studied endpoints ($p < 0.15$) entered the multivariable analysis. Unless specified otherwise, *p* values <0.05 (2-sided test) were considered statistically significant. All statistical analyses were performed using SPSS V.20.0 (SPSS, Chicago, USA).

RESULTS

Baseline characteristics

Of the 1321 enrolled patients, 173 (13.1%) developed HF during pregnancy or after delivery, including 16 cases of HF during delivery not included in the previous publication.¹⁹ Baseline characteristics of patients with and without HF are shown in table 1. There was a significant difference in type of lesion ($p < 0.001$), with more women with HF having left-sided lesions (68% vs 45%). By contrast, fewer women with HF had a right-sided lesion (12% vs 27%) or a shunt lesion (20% vs 27%). Of all shunt lesions 35% of patient had uncorrected shunts and 10% of patients had some degree of pulmonary hypertension. Different diagnoses are displayed in figure 1. In total, 71 patients with HF had CHD, 64 had VHD and 36 had CMP. In patients with available echocardiographic data, patients with HF had a lower mean fractional shortening at baseline than patients without HF (31% vs 36% $p = 0.007$).

Predictors of HF

The results of the univariable and multivariable logistic regression are shown in table 2. Independent baseline parameters associated with HF were NYHA class ≥ 3 and signs of HF prior to pregnancy, WHO category ≥ 3 , cardiomyopathy or pulmonary hypertension. During pregnancy, a diagnosis of pre-eclampsia was related to the occurrence of HF with an OR of 7.1 (95% CI 3.9 to 13.2 $p < 0.001$). Of all patients in the registry who developed pre-eclampsia, 30% developed HF as well. Of patients with pre-eclampsia and HF, 29% had peripartum cardiomyopathy, 29% mitral valve disease, 14% other cardiomyopathies and 14% an ASD. In the univariable analysis, CHD was associated with a lower risk of HF than other diagnoses

Table 1 Baseline characteristics of patient with and without HF

	Total group	n=1321	Patient with HF n=173	
Patient without HF n=1148	p Value			
Mean age in years (SD)	30 (5.6)	29 (6.2)	30 (5.6)	0.18
Nulliparity (%)	50	42	51	0.021
Atrial fibrillation (%)	2	6.4	1.3	<0.001
Hypertension	6.7	8.1	6.5	0.45
Smoking (%)	3.3	4	3.1	0.53
Any medication before pregnancy (%)	28	36	27	0.01
NYHA class (%)				<0.001
NYHA class 1	70	36	76	
NYHA class 2	25	48	21	
NYHA class 3	3.1	15	1.3	
NYHA class 4	0.3	1.2	0.2	
WHO category (%)				<0.001
WHO 1	18	1.8	21	
WHO 2	39	19	42	
WHO 3	38	60	35	
WHO 4	4	19	1.9	
Type of lesion (%)				<0.001
Left sided lesions		68	45	
Right sided lesions		12	27	
Shunt lesions		20	27	
Type of heart disease (%)				<0.001
Valvular heart disease	25	37	24	
Cardiomyopathy	6.7	21	4.5	
Ischaemic heart disease (%)	1.9	1.2	2	
CHD (%)	66	41	70	
Complexity of CHD				0.24
Simple CHD (%)	35	35	26	
Moderate complex CHD (%)	52	52	57	
Complex CHD (%)	13	13	17	

CHD, congenital heart disease; HF, heart failure; NYHA New York Heart Association.

with an OR of 0.3 (95% CI 0.2 to 0.4). When corrected for other univariable predictors of HF in a multivariable model, this was still significant with an OR of 0.40 (95% CI 0.23 to 0.62 $p<0.001$). Uncorrected shunts were not a significant predictor in neither univariable nor multivariable analysis. HF occurred more often in patients with shunt lesions who had pulmonary hypertension (7% vs 41% $p<0.001$). Concomitant valvular disease did not contribute to HF in patients with shunt lesion. Of patients with persistent duct, 23% had HF, these were mainly patients with pulmonary hypertension, or an uncorrected shunt or concomitant valvular disease. In patients with mitral stenosis and/or mitral regurgitation HF occurred relatively often (table 3); 35% of these patients had pulmonary hypertension.

Onset of HF

Median onset of HF was at 31 weeks of gestation (IQR 23–40). Of all patients with HF, 106 (61%) had HF only during pregnancy, 40 (23%) only after delivery and 27 (16%) during pregnancy and after delivery. HF occurred in 7% in the first trimester, 34% occurred in the second trimester, 28% in the third trimester, 10% at delivery and 21% postpartum. More detailed timing of HF is displayed in figure 2. There is a peak in weeks 23–30 of gestation, and in the

first weeks after delivery. Of the 20 patients with postpartum HF, 61% occurred in the first week after delivery; in 11 of these patients (55%), HF occurred in the first 24 h after delivery. Postpartum HF was encountered in peripartum cardiomyopathy (21%), mitral regurgitation (14%), other cardiomyopathies (10.5%) and Tetralogy of Fallot (6%). There were large differences in frequency and timing of HF in different patient groups (table 3). HF was common in patients with a cardiomyopathy, and occurred mainly in the weeks around delivery. In VHD, patients HF occurred throughout pregnancy. In patients with shunt lesions, HF typically occurred around 25 weeks of gestation and was more common in patients with pulmonary arterial hypertension. Patients with pulmonary hypertension had HF at a mean of 29 weeks of gestation, whereas patients without pulmonary hypertension had HF at a mean of 31 weeks of gestation ($p=0.33$).

Maternal and fetal outcome

The diagnosis of HF was associated with a significantly higher maternal mortality ($p<0.001$). In all but one of the patients who did not survive, the reason of death was cardiac failure, either acute or chronic. The patient who did not have a cardiac reason, died of bronchopneumonia. Obstetric complications were also more common in these patients, as shown in table 4. Mode of delivery in patients with HF, was by emergency caesarean section in 22%, by elective caesarean section in 36% and vaginally in 40%; in 3%, mode of delivery was not recorded. Overall, 58% of patients with HF were delivered by caesarean section compared to 38% in patients without HF ($p<0.001$). Caesarean section was for cardiac reasons in 57% of all HF patients with a caesarean section, versus 29% in patients without HF ($p<0.001$).

Fetal death occurred more often in patients with HF ($p=0.001$). Birth weight was lower than 2500 g in 24% of patients with HF, and in 13% in patients without HF ($p<0.001$). Of these children, 33 (80%) were born prematurely. Median time of delivery was 38 weeks (IQR 36–39) for patients with HF, and 39 weeks (IQR 37–40) in patients without HF ($p<0.001$). There was no correlation between onset of HF and timing of delivery ($R^2=0.003$) nor was there a correlation ($R^2=0.023$) between onset of HF and birth weight (corrected for time of delivery).

DISCUSSION

In this large worldwide registry of pregnant women with underlying cardiac disease,¹⁹ we investigated timing and predictors of HF. HF was the most common complication, occurring in 13% of the patients.¹⁹ We showed that the onset of HF depended on the underlying cardiac diagnosis, with HF most frequently diagnosed in the second or third trimester, or shortly after delivery. HF was found most often in women with poor prepregnancy cardiac function, with a diagnosis of cardiomyopathy or pulmonary hypertension. Patients with HF had a higher rate of adverse maternal and fetal outcomes. Furthermore, this is the first study to identify specific predictors for the occurrence of HF.

Rate of HF in relation to different underlying cardiac diagnoses

In this registry, the rates of HF in various diagnoses slightly differ from reported rates in the literature. For simple diagnoses, such as mitral regurgitation, aortic coarctation, aortic abnormalities and shunt lesions, rates of HF are high in this registry when compared to the literature.^{24–25} This may be partially explained by the high percentage of pulmonary hypertension in some of the lesions, such as mitral stenosis and/or regurgitation and uncorrected shunt lesions. Yap *et al*^{26–27} described a higher rate

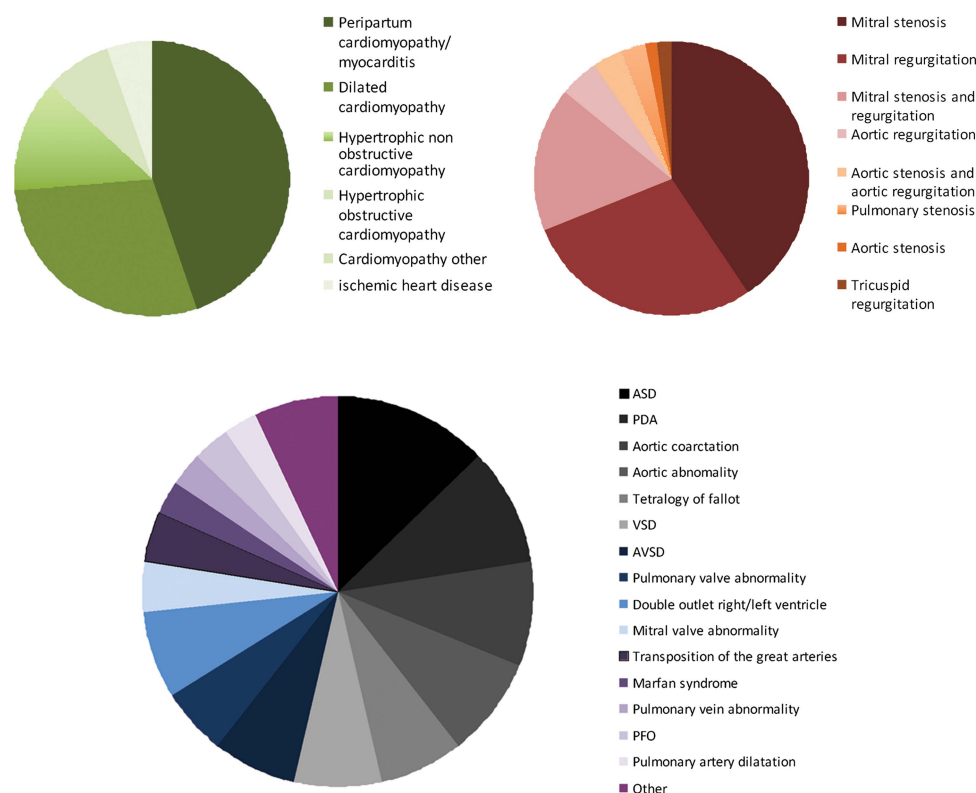


Figure 1 Diagnosis in patients with heart failure. In green shades, cardiomyopathy (n=36); in red shades, valvular heart disease (n=64); in other shades, congenital heart disease (n=71).

of complications in patients with uncorrected shunts, in patients with atrial septal defects and ventricular septal defect, but none of the women developed HF. We reported a HF rate of 3.8% in patients with atrial switch procedure for transposition of the great arteries which is relatively low compared to previously reported rates of 2.7%, 4.1% and 7.1%.^{28–30}

Predictors

In our univariable analysis, several factors were associated with an increased or low risk of HF (table 2). The factors cardiomyopathy, NYHA class ≥ 3 , WHO ≥ 3 , pre-pregnancy HF and pulmonary hypertension remained significantly associated in the multivariate analysis. The presence of a left-sided lesion and medication use prior to pregnancy showed a weak association. The loss of several of the factors of the univariable analysis suggests that their risk was indirectly mediated through a second factor. For example, the relationship of HF with developing countries was probably due to more severe disease, including a higher prevalence of pulmonary hypertension. Of those factors that remained significant, the strongest were prepregnancy HF and poor functional class and, in addition, high risk of pregnancy as represented by high WHO class. These are useful parameters in counselling of women with heart disease considering pregnancy. Interestingly, WHO class was a predictor of HF in the multivariable analysis, even though this classification was designed to predict the risk of any cardiovascular complication and not just of HF. In the prospective study of Siu *et al*, EF $< 40\%$ predicted complications. We found that EF and fractional shortening were strong univariable predictors of HF in the subgroup of patients in which these data were available, however, these variables could not be tested in the multivariable model due to missing data. Pulmonary hypertension has also been recognised as a high-risk condition and predictor for cardiovascular events in previous studies.^{31–32} However, pulmonary

hypertension did not predict complications in the studies of Drenthen *et al* and Siu *et al*, probably because few patients with pulmonary hypertension were included in their studies.^{3–4} In this registry, we included patients from developing countries where the prevalence of pulmonary hypertension is relatively high, therefore, we could identify pulmonary hypertension as a predictor of HF.

In our series, the presence of a mechanical valve was not a predictor of HF, but these patients are mainly at risk for other complications, such as haemorrhage and valve thrombosis. Similarly, IHD was not a predictor of HF, possibly because left ventricular function may have been almost normal in most of these patients. The number of IHD patients was very small and more data are needed to draw conclusions regarding this patient group. Patients with CHD had a lower risk than patients with VHD, IHD or cardiomyopathy, but compared with the rate of HF in the normal healthy population, this risk is still increased. Patients with right-sided lesions and cyanotic lesions (mostly corrected) had a lower risk than patients with left-sided lesions.

Biomarkers, such as B-type natriuretic peptide (BNP), are established markers of HF.³³ However, their role during pregnancy in women with heart disease is incompletely studied. In the study by Tanous *et al*,³⁴ BNP levels were associated with cardiovascular events during pregnancy. Importantly, BNP levels lower than 100 pg/mL had a negative predictive value of 100% for identifying events during pregnancy. However, since in a large proportion of patients the BNP level was only measured at time of the event and not before this, additional studies are clearly warranted to show the value of BNP in pre-pregnancy risk models. In this registry, we did not collect data on biomarkers.

Timing

To date, data on the timing of HF in pregnant women with heart disease are scarce. The peripartum period is regarded as

Table 2 Predictors of HF

Univariable	OR	95% CI	p Value
Congenital heart disease	0.3	(0.2 to 0.4)	<0.001
Valvular heart disease	1.9	(1.4 to 2.7)	<0.001
Cardiomyopathy	4.8	(3.0 to 7.88)	<0.001
Ischaemic heart disease	0.6	(0.1 to 2.4)	0.45
Right-sided lesion	0.4	(0.2 to 0.6)	<0.001
Left-sided lesion	2.7	(1.9 to 3.8)	<0.001
Shunt lesion	0.7	(0.5 to 1.0)	0.08
Cyanotic lesion	0.4	(0.2 to 0.6)	<0.001
NYHA class ≥ 3	6.2	(3.7 to 10.5)	<0.001
WHO ≥ 3	5.3	(3.7 to 7.6)	<0.001
Nulliparity	0.7	(0.5 to 0.9)	0.02
Hypertension	1.3	(0.7 to 2.3)	0.45
Smoking	1.3	(0.6 to 3.0)	0.53
Developing countries	3.2	(2.2 to 4.6)	<0.001
Signs of HF prior to pregnancy	17.3	(11.6 to 25.7)	<0.001
Rhythm: atrial fibrillation before pregnancy	5.1	(2.3 to 11.4)	<0.001
Pulmonary hypertension	4.5	(3.1 to 6.6)	<0.001
Mechanical valves	0.5	(0.2 to 1.5)	0.25
Any medication before pregnancy	1.6	(1.1 to 2.2)	0.011
Echo prior to pregnancy: systemic ventricular function moderate/ severely impaired	4.2	(1.7 to 10.3)	0.002
FS <30	3.4	(1.3 to 8.9)	0.02
Pulmonary ventricular function moderate/severely impaired	3.1	(0.9 to 10.5)	0.07
Multivariable			
Valvular heart disease	1.0	(0.5 to 1.7)	0.88
Cardiomyopathy	4.6	(2.3 to 9.1)	<0.001
Developing countries	0.9	(0.5 to 1.6)	0.77
NYHA class ≥ 3	2.3	(1.2 to 4.4)	0.01
WHO ≥ 3	2.3	(1.5 to 3.6)	<0.001
Any medication before pregnancy	0.8	(0.4 to 1.0)	0.08
Rhythm: atrial fibrillation before pregnancy	2.4	(0.8 to 6.9)	0.11
Signs of HF prior to pregnancy	9.6	(5.9 to 15.5)	<0.001
Pulmonary hypertension	1.8	(1.0 to 3.0)	0.04
Left-sided lesion	1.6	(1.0 to 2.7)	0.07

HF, heart failure; NYHA, New York Heart Association.

high-risk period because of cardiac stress due to pain and anxiety as well as fluid overload.¹¹ While peripartum cardiomyopathy by definition occurs in the months around delivery, patients with VHD are reported to present with HF during pregnancy as well as in the peripartum period.^{7–10} In our study, there appeared to be two peaks, one at the end of the second and beginning of the third trimester, and the other around delivery. Within this pattern, there were distinct clusters of diagnostic groups. Women with abnormalities causing pulmonary hypertension, such as shunt lesions and mitral stenosis, typically went into HF before 30 weeks gestation. In those with most forms of cardiomyopathy, HF was diagnosed peripartum. The first peak, corresponding to 23–30 weeks occurred when most of the important haemodynamic changes had taken place. Stroke volume then has reached its maximum (up to 130% of normal) for a number of weeks, but heart rate is just starting to increase. The second peak occurred around delivery, corresponding with peripartum haemodynamic changes. Peripartum cardiac output increases with an additional 25%, and after delivery, autotransfusion from the uterus will further increase circulatory volume thereby stressing both the left and RV. Firm conclusions for all diagnostic groups cannot be made, some of the diagnostic groups were small.

Pregnancy outcome in patients with HF

Pre-eclampsia during pregnancy was associated with HF with an OR of 7.1. In previously healthy women who develop pre-eclampsia, diastolic and systolic left ventricular function abnormalities have been demonstrated, but these rarely develop into HF.³⁵ However, in women with pre-existing heart disease, the added strain of pre-eclampsia precipitates HF resulting in a rate as high as 30% of the patients. This is an important novel finding of our study, which indicates that patients with heart disease who develop pre-eclampsia should be monitored carefully for the development of HF. One-third of the HF associated with pre-eclampsia was in patients with peripartum cardiomyopathy, which is a known association.^{35–36} However, two-thirds of the HF occurring in patients with pre-eclampsia occurred in patients with other underlying diseases. HF was also associated with endocarditis, which likely was a cause of HF. Caesarean section rates were high in patients with HF, with the majority having a CS for cardiac reasons. Women with HF were often delivered preterm probably to shorten the period of volume load and to be able to institute more aggressive therapy for the treatment of HF, however, the decision for early delivery may have a negative impact on the offspring in the longer term.³⁷ On the other hand, fetal death and intrauterine growth

Table 3 Onset of HF in patients per different diagnostic group

Type of heart disease	Number of patients	Heart failure (%)	Timing of HF (median weeks of gestation)	IQR*
Aortic abnormality	28	21	19	(8–32)
Complete atrioventricular septal defect	26	15	23	(3–43)
Persistent ductus arteriosus	31	23	24	(12–36)
Mitral stenosis	79	31	25	(13–37)
Ventricular septal defect	113	4.4	25	(2–48)
Atrial septal defect	111	8.1	27	(9–47)
Aortic coarctation	77	7.6	30	(15–44)
Hypertrophic obstructive cardiomyopathy*	11	18	33	(26–40)
Aortic stenosis and regurgitation*	19	11	34	(26–42)
Pulmonary valve abnormality*	61	6.6	34	(16–69)
Dilated cardiomyopathy	32	34	35	(20–48)
Mitral regurgitation	86	21	37	(24–50)
Mitral stenosis and regurgitation	63	18	38	(19–57)
Transposition of the great arteries*	56	3.6	39	(37–40)
Peripartum cardiomyopathy/myocarditis	17	68	40	(37–44)
Non obstructive hypertrophic cardiomyopathy	16	31	40	(16–66)
Tetralogy of Fallot	119	4.2	41	(34–48)
Ischaemic heart disease*	25	8	42	(41–42)

*Range instead of IQR.
HF, heart failure.

retardation occurred more often in patients with HF, which may keenly illustrate the difficult balance between early delivery and prolonging pregnancy in this high-risk situation. Reassuringly, neonatal death rates were not different.

Limitations

Some of the parameters previously described in the literature were not collected in this database, such as the severity of left ventricular outflow tract obstruction (peak aortic gradient >50 mm Hg or aortic valve area <1.0 cm²). Therefore, we could neither confirm nor contradict the value of these previously identified predictors. Echocardiographic and laboratory data (such as right ventricular systolic pressure) were not available in a majority of the patients and, therefore, could not be involved in the multivariable analysis. As with other international registries, the input and quality of data was checked in only 5–10% of cases. Additionally, some centres had much higher volumes than others. Since our dataset had limitations, necessarily some of the definitions (such as pulmonary hypertension) deviated from current guidelines, therefore, all data and comments on this matter must be seen in this perspective. We did not collect detailed

information on the severity of HF, although we do know that all patients needed treatment. Details on type of treatment and length of hospital stay could, however, not be analysed. Importantly, the use of predictors has limitations in estimating the risk of pregnancy in individual patients. Always, predictors identified in multiple studies must be taken into account together with the results of disease-specific studies. Although we showed that timing of HF was dependent on underlying heart disease, some of the subgroups were small. Consequently, our findings need to be confirmed in future large studies. As with all registries, there was some missing information, this was about 4%.

CONCLUSION

HF was the most common complication in this pregnancy registry. Timing of HF was dependant on the underlying cardiac diagnosis, with HF in the second trimester occurring mainly in patients with shunt lesions or VHD. By contrast, patients with cardiomyopathy and IHD developed HF shortly after delivery. In addition to the previously recognised risk factors such as pre-pregnancy signs of HF, high NYHA class or WHO category ≥3, we discovered new predictors for HF: cardiomyopathy or

Figure 2 Occurrence of heart failure in patients with structural heart or ischaemic heart disease during and after pregnancy. Y-axis: Percentage of patients of total number of patients with heart failure. X-axis: In red, weeks of gestation; in dark blue, heart failure at the first day after delivery; and in light blue, heart failure in the weeks postpartum. Above the bars, the number of patients still pregnant at the beginning of the period is displayed.

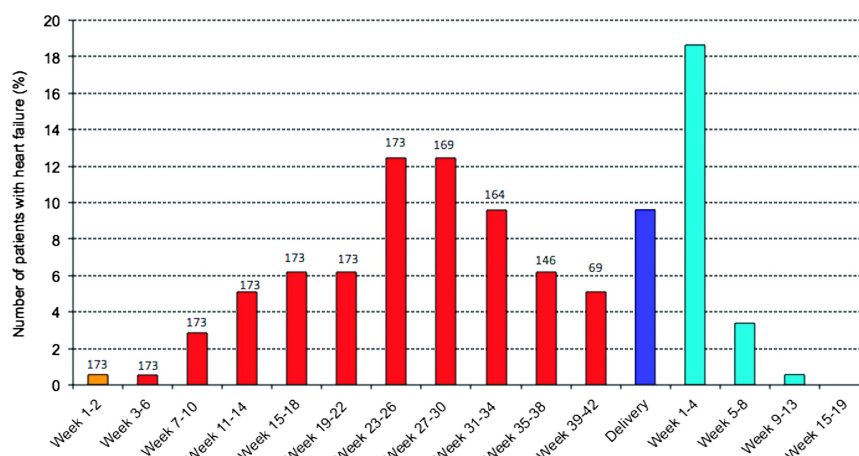


Table 4 Other complications during pregnancy and fetal outcome in patients with and without HF

	Total group n=1321	Patients with HF (n=173)	Patients without HF (n=1148)	p Value
Maternal mortality (%)	1	4.8	0.5	<0.001
Cardiac (%)				
Atrial fibrillation	0.9	1.2	0.9	0.71
Ventricular arrhythmias	2	2.9	1.8	0.35
Thromboembolic events	0.5	1.2	0.3	0.14
Endocarditis	0.2	1.2	0.1	0.006
Bleeding complications postpartum	4.9	4.6	5	0.85
Obstetric (%)				
Intra uterine growth retardation	5.8	13	4.6	<0.001
Pregnancy induced hypertension	2.4	2.9	2.4	0.67
(Pre-)eclampsia	3.3	12	1.9	<0.001
Bleeding complications during pregnancy	1.6	2.9	1.4	0.14
Fetal outcome (%)				
Fetal death	1.7	4.6	1.2	0.001
Neonatal death	0.6	0.7	0.6	0.92
Premature birth <37 weeks	15	30	13	<0.001
Birth weight <2500 g	14	24	13	<0.001
Apgar score <7 (%)	10	13	9.3	0.10
Adjusted mean birth weight (g)*		3328	3358	0.46

*Birth weight corrected for: gestational age, smoking, pre-eclampsia, fetal sex and nulliparity.
HF, heart failure.

pulmonary hypertension. Furthermore pre-eclampsia during pregnancy was associated with HF, and patients with HF were delivered preterm more frequently.

Key messages

What is already known about this subject

Heart failure is one of the most important complications in pregnant women with heart disease, causing maternal and fetal mortality and morbidity.

What this study adds

Heart failure was the most common complication in pregnant women with underlying heart disease. Women with signs of heart failure prior to pregnancy, NYHA ≥ 3 , WHO ≥ 3 , cardiomyopathy or pulmonary hypertension are especially at risk. In our study, there appeared to be two peaks for onset of heart failure: the first peak at the end of the second and beginning of the third trimester, and the second peak around delivery. Women with heart disease who develop pre-eclampsia, have a risk of 30% to develop heart failure during their pregnancy.

Acknowledgements The investigators participating in the ROPAC at 1 June 2011 are listed in the online supplementary appendix. The ROPAC is included in the EurObservational Research Programme (EORP) of the European Society of Cardiology. The EurObservational Research Programme (EORP) was sponsored by the following companies: Abbott Vascular Int., Amgen, Bayer Pharma, Bristol Myers Squibb, Boehringer Ingelheim, Boston Scientific Int., Daiichi Sankyo, Menarini Int., Merck & Co. (MSD), Novartis, Pfizer, Servier Int. If you are interested in joining this registry, please go to the following website: (<http://www.escardio.org/guidelines-surveys/eorpsurveys/pregnancy/Pages/welcome.aspx>). We thank the EORP team for their excellent support: Elin Folkesson Lefrancq, Cecile Laroche, Charles Taylor, Gerard Gracia, Viviane Missiamenou, Marème Konte, Maryna Andarala, Emanuela Fiorucci, Patti-Ann McNeill, Myriam Glénot and Malika Manini.

Contributors All authors have made significant contributions to the design, execution, analysis and writing of this study, and will share responsibility for the published material.

Competing interests None.

Ethics approval When warranted, ethical approval or Institutional Review Board was obtained (eg, Germany, USA, Canada, Belgium), however, in many countries the procedure to obtain ethical approval was waived because of the anonymised and untraceable nature of the data.

Provenance and peer review Not commissioned; externally peer reviewed.

REFERENCES

- Garovic VD, Bailey KR, Boerwinkle E, *et al.* Hypertension in pregnancy as a risk factor for cardiovascular disease later in life. *J Hypertens* 2010;28:826–33.
- Hunter S, Robson SC. Adaptation of the maternal heart in pregnancy. *Br Heart J* 1992;68:540–3.
- Siu SC, Sermer M, Colman JM, *et al.* Prospective multicenter study of pregnancy outcomes in women with heart disease. *Circulation* 2001;104:515–21.
- Drenthen W, Boersma E, Balci A, *et al.* Predictors of pregnancy complications in women with congenital heart disease. *Eur Heart J* 2010;17:2124–32.
- Khairy P, Ouyang DW, Fernandes SM, *et al.* Pregnancy outcomes in women with congenital heart disease. *Circulation* 2006;113:517–24.
- Regitz-Zagrosek V, Blomstrom Lundqvist C, Borghi C, *et al.* ESC Guidelines on the management of cardiovascular diseases during pregnancy: the Task Force on the Management of Cardiovascular Diseases during Pregnancy of the European Society of Cardiology (ESC). *Eur Heart J* 2011;32:3147–97.
- Sliwa K, Hilfiker-Kleiner D, Petrie MC, *et al.* Current state of knowledge on aetiology, diagnosis, management, and therapy of peripartum cardiomyopathy: a position statement from the Heart Failure Association of the European Society of Cardiology Working Group on peripartum cardiomyopathy. *Eur J Heart Fail* 2010;12:767–78.
- Elkayam U, Bitar F. Valvular heart disease and pregnancy part I: native valves. *J Am Coll Cardiol* 2005;46:223–30.
- Hameed A, Karaalp IS, Tummala PP, *et al.* The effect of valvular heart disease on maternal and fetal outcome of pregnancy. *J Am Coll Cardiol* 2001;37:893–9.
- Silversides CK, Colman JM, Sermer M, *et al.* Cardiac risk in pregnant women with rheumatic mitral stenosis. *Am J Cardiol* 2003;91:1382–5.
- Hunter S, Robson S. Adaptation of the maternal heart in pregnancy. *Br Heart J* 1992;68:540–3.
- Robson SC, Dunlop W, Boys RJ, *et al.* Cardiac output during labour. *Br Med J* 1987;295:1169–72.
- Karamermer Y, Roos-Hesslink JW. Pregnancy and adult congenital heart disease. *Expert Rev Cardiovasc Ther* 2007;5:859–69.
- Hatton R, Colman JM, Sermer M, *et al.* Cardiac risks and management of complications in pregnant women with congenital heart disease. *Future Cardiol* 2012;8:315–27.
- Drenthen W, Pieper PG, Roos-Hesslink JW, *et al.* Outcome of pregnancy in women with congenital heart disease: a literature review. *J Am Coll Cardiol* 2007;49:2303–11.
- Krul SP, van der Smagt JJ, van den Berg MP, *et al.* Systematic review of pregnancy in women with inherited cardiomyopathies. *Eur J Heart Fail* 2011;13:584–94.
- Grewal J, Siu SC, Ross HJ, *et al.* Pregnancy outcomes in women with dilated cardiomyopathy. *JACC* 2009;55:45–52.
- Silversides CK, Salehian O, Oechslin E, *et al.* Canadian Cardiovascular Society 2009 Consensus Conference on the management of adults with congenital heart disease: complex congenital cardiac lesions. *Can J Cardiol* 2010;26:e98–117.
- Roos-Hesslink JW, Ruys TP, Stein JI, *et al.* Outcome of pregnancy in patients with structural or ischaemic heart disease: results of a registry of the European Society of Cardiology. *Eur Heart J* 2013;34:657–65.
- Hunt SA, Abraham WT, Chin MH, *et al.* 2009 Focused update incorporated into the ACC/AHA 2005 Guidelines for the Diagnosis and Management of Heart Failure in Adults A Report of the American College of Cardiology Foundation/American Heart Association Task Force on Practice Guidelines Developed in Collaboration With the International Society for Heart and Lung Transplantation. *J Am Coll Cardiol* 2009;53:e1–90.

- 21 World Economic Outlook (WEO) Growth Resuming, Dangers Remain, April 2012, 177–180 <http://www.imf.org/external/pubs/ft/weo/2012/01/index.htm> (20 April 2012).
- 22 Thorne S, MacGregor A, Nelson-Piercy C. Risks of contraception and pregnancy in heart disease. *Heart* 2006;92:1520–5.
- 23 Warnes CA, Liberthson R, Danielson GK, *et al.* Task force 1: the changing profile of congenital heart disease in adult life. *J Am Coll Cardiol* 2001;37:1170–5.
- 24 Vriend JW, Drenthen W, Pieper PG, *et al.* Outcome of pregnancy in patients after repair of aortic coarctation. *Eur Heart J* 2005;26:2173–8.
- 25 Lesniak-Sobelga A, Tracz W, Kostkiewicz M, *et al.* Clinical and echocardiographic assessment of pregnant women with valvular heart diseases—maternal and fetal outcome. *Int J Cardiol* 2004;94:15–23.
- 26 Yap SC, Drenthen W, Meijboom FJ, *et al.* Comparison of pregnancy outcomes in women with repaired versus unrepaired atrial septal defect. *BJOG* 2009;116:1593–601.
- 27 Yap SC, Drenthen W, Pieper PG, *et al.* Pregnancy outcome in women with repaired versus unrepaired isolated ventricular septal defect. *BJOG* 2010;117:683–9.
- 28 Canobbio MM, Morris CD, Graham TP, *et al.* Pregnancy outcomes after atrial repair for transposition of the great arteries. *Am J Cardiol* 2006;98:668–72.
- 29 Guedes A, Mercier LA, Leduc L, *et al.* Impact of pregnancy on the systemic right ventricle after a Mustard operation for transposition of the great arteries. *J Am Coll Cardiol* 2004;44:433–7.
- 30 Drenthen W, Pieper PG, Ploeg M, *et al.* Risk of complications during pregnancy after Senning or Mustard (atrial) repair of complete transposition of the great arteries. *Eur Heart J* 2005;26:2588–95.
- 31 Bedard E, Dimopoulos K, Gatzoulis MA. Has there been any progress made on pregnancy outcomes among women with pulmonary arterial hypertension? *Eur Heart J* 2009;30:256–65.
- 32 Song YB, Park SW, Kim JH, *et al.* Outcomes of pregnancy in women with congenital heart disease: a single center experience in Korea. *J Korean Med Sci* 2008;23:808–13.
- 33 Eindhoven JA, van den Bosch AE, Jansen PR, *et al.* The usefulness of brain natriuretic peptide in complex congenital heart disease: a systematic review. *J Am Coll Cardiol* 2012;60:2140–9.
- 34 Tanous D, Siu SC, Mason J, *et al.* B-type natriuretic peptide in pregnant women with heart disease. *J Am Coll Cardiol* 2010;56:1247–53.
- 35 Melchiorre K, Thilaganathan B. Maternal cardiac function in pre-eclampsia. *Curr Opin Obst Gynecol* 2011;23:440–7.
- 36 Elkayam U. Clinical characteristics of peripartum cardiomyopathy in the United States: diagnosis, prognosis, and management. *J Am Coll Cardiol* 2011;58:659–70.
- 37 Gibson AT, Carney S, Cavazzoni E, *et al.* Neonatal and postnatal growth. *Horm Res* 2000;53(Suppl 1):42–9.

ROPAC investigators:

Site	Investigators
Innsbruck, Austria	E. Donhauser , J. Stein
Leuven, Belgium	W. Budts
Gent, Belgium	J. De Backer
Brussels, Belgium	M. Morissens
Hamilton, Ontario, Canada	E. Gordon , L. Walter
Montreal, Canada	A. Marelli , A. R. Montesclaros
Prague, Czech republic	J. Popelova
Hradec Kralove, Czech Republic	Z. Vavera
Minia, Egypt	N. Taha
Benha (Kaliubeya), Egypt	A. El Nagar, H.H. Ebaid , W. A. El Sayed Makled
Cairo, Egypt	K. Sorour , M. A. Meguid Mahdy, Z. Ashour
Alexandria, Egypt	Y. Elrakshy
Paris, France	B. Iung
Paris, France	L. Iserin , M. Ladouceur
Tbilisi, Georgia	D. Maisuradze
München, Germany	H. Kaemmerer , S. Mebus, K.T.M. Schneider B. Kuschel
Muenster, Germany	A. Hellige , A. Kempny , R. Schmidt
Essen, Germany	C. Wald
Oldenburg, Germany	R. Motz
Berlin, Germany	F. Berger , N. Nagdyman
Athens, Greece	A. Frogoudaki
Rehovot, Israel	S. Goland
Beer Yakov, Israel	A. Blatt
Torino, Italy	A. Maina , C. Bossotti , E. Gollo , E. Vasario , G. Boccuzzi , T. Todros , V. Donvito , W. Grosso Marra
Bolzano, Italy	C. Romeo , R. Crepaz
Milano, Italy	V. Fesslova
Massa, Italy	P. Festa
Palermo, Italy	M. G. Carmina
Chiba, Japan	K. Niwa, T. Ikeda, Y. Matsuda
Vilnius, Lithuania	L. Gumbiene
Msida, Malta	A. Cassar , M. Caruana
Rotterdam, The Netherlands	J. Roos-Hesselink , Y. Karamermer, A. Can, J. Duvekot, J. Cornette
Groningen, The Netherlands	E. Pieper
Utrecht, the Netherlands	C. van Oppen
The Hague, The Netherlands	C. De Groot

Geldrop, The Netherlands	P. Polak
Oslo, Norway	M. Estensen
Krakow, Poland	A. Lesniak-Sobelga , M. Olszowska , P. Podolec , S. Wisniowska-Smialek
Lisboa, Portugal	L. de Sousa
Coimbra, Portugal	N. Guerra
Bucharest, Romania	V. Petrescu
Izhevsk, Russian federation	I. Ravilevich Gaisin, L.V. Shilina
Moscow, Russian Federation	N. Sharashkina , O. Tkacheva
Belgrade, Serbia	L. Jovovic
Ljubljana, Slovenia	M. Kozelj
Barcelona, Spain	A. Pijuan Domenech
Barcelona, Spain	M. T. Subirana
Madrid, Spain	J. M. Oliver
Bilbao, Spain	N. Murga
Lund, Sweden	U. Thilen
Bern, Switzerland	M. Schwerzmann
Abu Dhabi, United Arab Emirates	W. Almahmeed
Dubai, United Arab Emirates	A. Yusufali , E. Alhatou , F. Hussain
London, United Kingdom	P. Nihoyannopoulos
Norwich, Norfolk, United Kingdom	L. Freeman , R. Hall
Southampton, United Kingdom	G. Veldtman , J. Kerr , L. Tellett
Hershey, United States	J. Botti , J. Ting , W. R. Davidson
Seattle, United states	M. Gurvitz , C. Otto
Palo Alto, California, United States	C. Talluto , D. Murphy , M. G. Perlroth
Detroit, Michigan, United States	K. Chintala , P. Gupta