

## IMAGE CHALLENGE

# A 56-year-old woman with breathlessness

## CLINICAL INTRODUCTION

A 56-year-old female with adult-onset asthma was admitted to the cardiology service with intermittent left-sided chest pain and progressive dyspnoea. Twelve months prior to this admission, she had received a course of prednisolone for bilateral anterior uveitis. Physical examination was unremarkable with blood sampling revealing a marked eosinophilia (eosinophil count  $17.3 \times 10^9/L$ ) and a perinuclear antineutrophil cytoplasmic

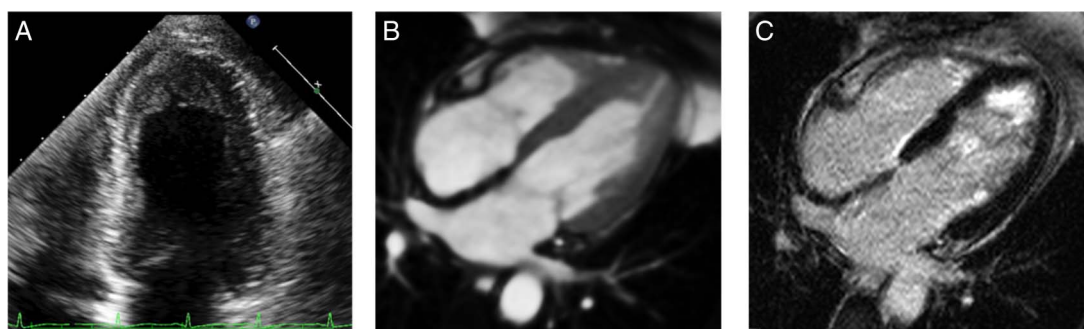
antibody staining pattern on indirect immunofluorescence microscopy (myeloperoxidase antibodies 83 IU/mL). ECG demonstrated anterolateral T-wave inversion (see online supplementary figure S1). High-sensitivity troponin T was elevated at 100 ng/L. Invasive coronary angiography showed unobstructed coronary arteries. Echocardiography and cardiac magnetic resonance (CMR) were performed (figure 1).

## QUESTION

What is the most appropriate therapy?

- A. Beta-blockade and ACE inhibition
- B. Methylprednisolone
- C. Intravenous antibiotics
- D. Endocardectomy
- E. Implantable cardioverter defibrillator (ICD)

*For the answer see page 726*



**Figure 1** (A) Two-chamber echocardiogram. (B) Four-chamber steady-state free precession cardiac MRI. (C) Phase-sensitive inversion recovery cardiac MRI following gadolinium contrast.

For the question see page 686

### ANSWER: B

The correct answer is methylprednisolone. Echocardiography demonstrated an apical mass with obliteration of the left ventricular apex and extensive apical late gadolinium enhancement confirmed on CMR. Left ventricular function was preserved with no evidence of thrombus formation (see online supplementary movies 1 and 2). In combination with the clinical presentation, these findings were suggestive of acute eosinophilic myocarditis with an apical eosinophilic infiltrate.<sup>1</sup> Myeloperoxidase immunofluorescence pointed towards a unifying diagnosis of eosinophilic granulomatosis with polyangiitis (Churg-Strauss syndrome). This acute presentation differs from the 'classical' subacute appearance on CMR where there is usually ventricular thinning with superimposed endocardial thrombus. The first-line treatment is immunosuppression with methylprednisolone.<sup>2</sup>

Hypereosinophilic syndrome with cardiac involvement has been characterised in three stages: an acute necrotic stage with eosinophilic infiltration, a subacute phase with thrombus formation overlying the disrupted endocardium and chronic fibrotic progression to a restrictive cardiomyopathy. In the acute stage, medical therapy for chronic systolic heart failure is not indicated in the context of preserved left ventricular function. Antibiotics are not indicated in the absence of bacterial infection. Endocardectomy with preservation of the atrioventricular valve apparatus is advocated for advanced endomyocardial fibrosis to reduce ventricular filling pressures; however, it is not warranted during the acute phase.<sup>3</sup> Primary ICD therapy is not indicated in the absence of recurrent ventricular tachyarrhythmias.<sup>4</sup>

The patient was treated with methylprednisolone and cyclophosphamide. After 12 months of treatment, she had fully recovered with resolution of her peripheral eosinophilia and cardiac findings. Eosinophilic myocarditis has a high mortality rate, but early identification and treatment can lead to a regression of fulminant myocardial necrosis.

Alastair J Moss,<sup>1</sup> Marc R Dweck,<sup>1</sup> Peter D O'Kane<sup>2</sup>

<sup>1</sup>Centre for Cardiovascular Science, University of Edinburgh, Royal Infirmary of Edinburgh, Edinburgh, UK

<sup>2</sup>Dorset Heart Centre, Royal Bournemouth Hospital, Bournemouth, UK

**Correspondence to** Dr Alastair J Moss, Centre for Cardiovascular Science, University of Edinburgh, Chancellors Building, Royal Infirmary of Edinburgh, 47 Little France Crescent, Edinburgh EH16 4TJ, UK; alastairmoss@gmail.com

**Contributors** AJM and MRD wrote the manuscript and prepared the images. PDO was involved in the clinical care of the patient.

**Competing interests** None.

**Provenance and peer review** Not commissioned; externally peer reviewed.

► Additional material is published online only. To view please visit the journal online (<http://dx.doi.org/10.1136/heartjnl-2016-310611>).



### OPEN ACCESS

**Open Access** This is an Open Access article distributed in accordance with the terms of the Creative Commons Attribution (CC BY 4.0) license, which permits others to distribute, remix, adapt and build upon this work, for commercial use, provided the original work is properly cited. See: <http://creativecommons.org/licenses/by/4.0/>



CrossMark

**To cite** Moss AJ, Dweck MR, O'Kane PD. *Heart* 2017;**103**:726.

Received 13 September 2016

Revised 19 October 2016

Accepted 3 November 2016

Published Online First 29 November 2016

*Heart* 2017;**103**:726. doi:10.1136/heartjnl-2016-310611

### REFERENCES

- 1 Perazzolo Marra M, Thiene G, Rizzo S, *et al*. Cardiac magnetic resonance features of biopsy-proven endomyocardial diseases. *JACC Cardiovasc Imaging* 2014;**7**:309–12.
- 2 Mankad R, Bonnicksen C, Mankad S. Hypereosinophilic syndrome: cardiac diagnosis and management. *Heart* 2016;**102**:100–6.
- 3 Joshi R, Abraham S, Kumar AS. New approach for complete endocardectomy in left ventricular endomyocardial fibrosis. *J Thorac Cardiovasc Surg* 2003;**125**:40–2.
- 4 Coelho-Filho OR, Mongeon FP, Mitchell RN, *et al*. Images in cardiovascular medicine. Löffler endocarditis presenting with recurrent polymorphic ventricular tachycardia diagnosed by cardiac magnetic resonance imaging. *Circulation* 2010;**122**:96–9.