

Supplementary Figure 1

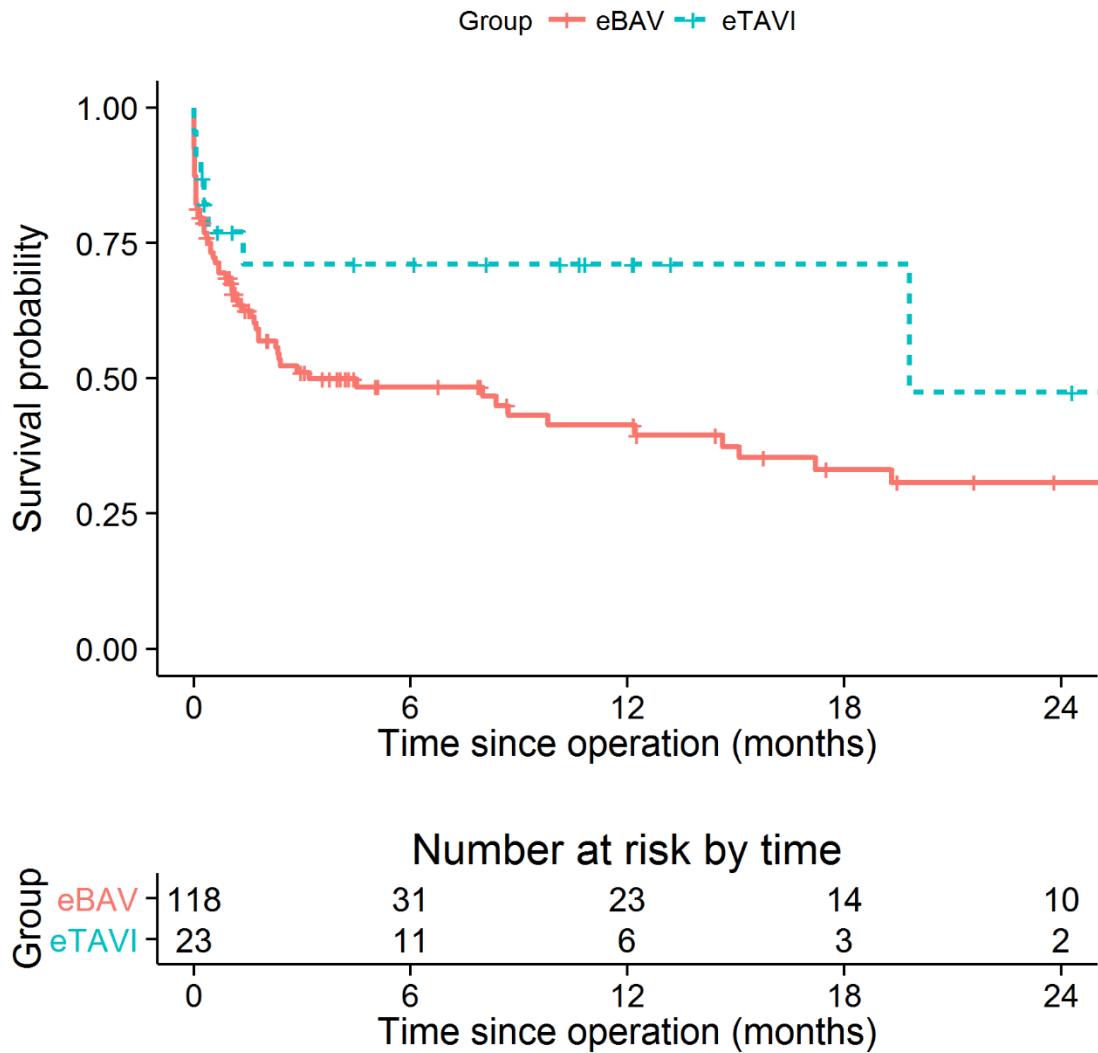


Figure 1 Suppl. shows the Kaplan-Meier survival curves for emergency BAV and emergency TAVI patients (restricted to the first two years of follow up) without censoring the patients undergoing TAVI intervention. The eBAV patients with subsequent elective TAVI were not censored at the time of TAVI intervention. Corresponding Cox models were fitted. The estimated HR comparing TAVI patients with BAV is 0.58 [0.28, 1.20], $p=0.141$, $p=0.141$. The estimated HR following adjustment for age, logistic Euroscore atrial fibrillation, coronary artery disease and a PCI in the 30 days preceding the emergency procedure.: 0.42 [0.18, 1.00], $p=0.049$