



## KEEPING CARDIOVASCULAR PROTECTION IN GOOD HANDS

### INNOVACE® (enalapril maleate, MSD) ABRIDGED PRODUCT INFORMATION

Refer to Data Sheet before prescribing.

#### PRESENTATION

Peach-coloured, triangular tablets, marked 'INNOVACE', containing 20 mg enalapril maleate, MSD. Red, triangular tablets marked 'INNOVACE', containing 10 mg enalapril maleate, MSD. White, half-scored, triangular tablets, marked 'INNOVACE', containing 5 mg enalapril maleate, MSD. White, round tablets, marked 'INNOVACE', containing 2.5 mg enalapril maleate, MSD.

#### INDICATIONS

**Hypertension:** All grades of essential hypertension and renovascular hypertension. **Heart failure:** Treatment of symptomatic heart failure, including reduction of mortality and retardation of progression; prevention of development of symptomatic heart failure and coronary ischaemic events.

#### DOSAGE AND ADMINISTRATION

**Hypertension:** Initially, 5 mg once daily, reduce starting dose to 2.5 mg if over 65 years, on diuretics or renally impaired. Adjust dose according to response; maintenance usually 10-20 mg once daily. Maximum dose 40 mg daily. Diuretic-treated patients - if possible stop diuretic two to three days before starting 'Innovace'. Resume diuretic later if required. **Heart failure (adjunctive therapy):** Initially, 2.5 mg daily under medical supervision (hospital initiation for severe heart failure; hospital initiation for high-risk patients is recommended), increasing to the usual maintenance dose of 20 mg daily according to tolerability. This dosage schedule has been shown to improve survival. **Impaired renal function:** May require a lower maintenance dose. 'Innovace' is dialysable.

1985

1995...

**INNOVACE®**  
(enalapril maleate, MSD)

#### CONTRA-INDICATIONS

Pregnancy - stop therapy if suspected. Hypersensitivity to 'Innovace'. Patients reacting with angioneurotic oedema to previous ACE-inhibitor treatment.

#### PRECAUTIONS

Assess renal function prior to therapy with 'Innovace' and during therapy where appropriate. Renal insufficiency; possibility of hypotension especially in ischaemic heart disease or cerebrovascular disease or in volume-depleted patients; surgery/anaesthesia. Combination with antihypertensives may increase hypotensive effect. In some patients with bilateral renal artery stenosis, increased blood urea and creatinine has been seen, especially in patients treated with diuretics and/or those with renal insufficiency. Minimises thiazide-induced hypokalaemia and hyperuricaemia. Potassium supplements, potassium-sparing diuretics, and potassium-containing salt substitutes are not recommended. Possible reduced response in Afro-Caribbean patients. Use with caution in breast-feeding mothers. Do not use in aortic stenosis, or outflow tract obstruction. Monitor serum levels of lithium, if lithium salts are given. ACE inhibitors should be avoided in patients dialysed with high-flux membranes.

#### SIDE EFFECTS

Side effects include: dizziness, headache. Others include fatigue, asthenia, hypotension, orthostatic hypotension, syncope,

nausea, diarrhoea, muscle cramps, rash, cough. Less common angioneurotic oedema; other hypersensitivity reactions; failure; symptomatic hypotension (especially if volume depleted); severe hypotension (more likely if severe failure); hyperkalaemia; hyponatraemia; increases in enzymes and serum bilirubin (usually reversible discontinuation of 'Innovace'); paraesthesiae; impotence.

A complex of symptoms has been reported which may include fever, serositis, vasculitis, myalgia, arthralgia/arthritis, a positive ANA, elevated ESR, eosinophilia and leucocytosis. If photosensitivity or other dermatological manifestations occur.

**PACKAGE QUANTITIES AND BASIC NHS COST**  
Titration Pack (2.5 mg tablets x 11, 5 mg tablets x 14), £6.14  
14-day calendar pack, 2.5 mg tablets, £10.00 for bottles of 50 tablets, £7.86 for 28-day calendar pack; £14.03 for bottles of 50, 10 mg tablets, £11.03 for 28-day calendar pack; £19.60 for bottles of 50, 20 mg tablets, £13.10 for 28-day calendar pack; £23.40 for bottles of 50.

**Product licence numbers:**  
2.5 mg tablets, 0025/0220; 5 mg tablets, 0025/0194; 10 mg tablets, 0025/0195; 20 mg tablets, 0025/0196.

**Product licence holder:**  
Merck Sharp & Dohme Limited, Hertford Road, Hoddesdon, Hertfordshire, EN11 9BU

[POM] Date of review: February 1995

® denotes registered trademark of Merck & Co., Inc., Whitehouse Station, NJ, USA.

© Merck Sharp & Dohme Limited 1995. All rights reserved.

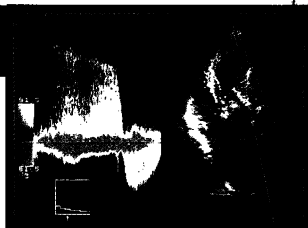


Please  
visit us at  
BCS

## THE FUTURE OF ECHOCARDIOGRAPHY IS NOW HERE

### NEW POWERVISION

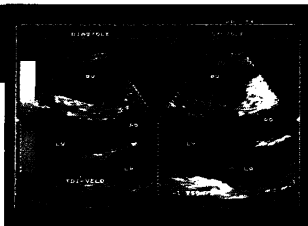
Launched in the UK at the BSE November 1994. The PowerVision is designed to give advanced Echocardiography service into the 21st century.



The PowerVision utilises an All Digital Architecture. This along with QSP (Quad Signal Processing) allows greater clarity, uniformity and higher frame rates (over 50 FPS when colour is applied over the 90° sector) plus greater reliability.

### NEW TISSUE DOPPLER IMAGING

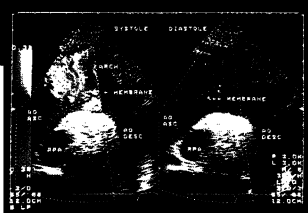
The high frame rates of PowerVision enable the unambiguous determination of Myocardial Functionality instantaneously. On screen cursors give pixel velocity displays for selected areas of the Myocardium for instantaneous readouts.



# Pictures straight from the Heart Stronger Faster Purer

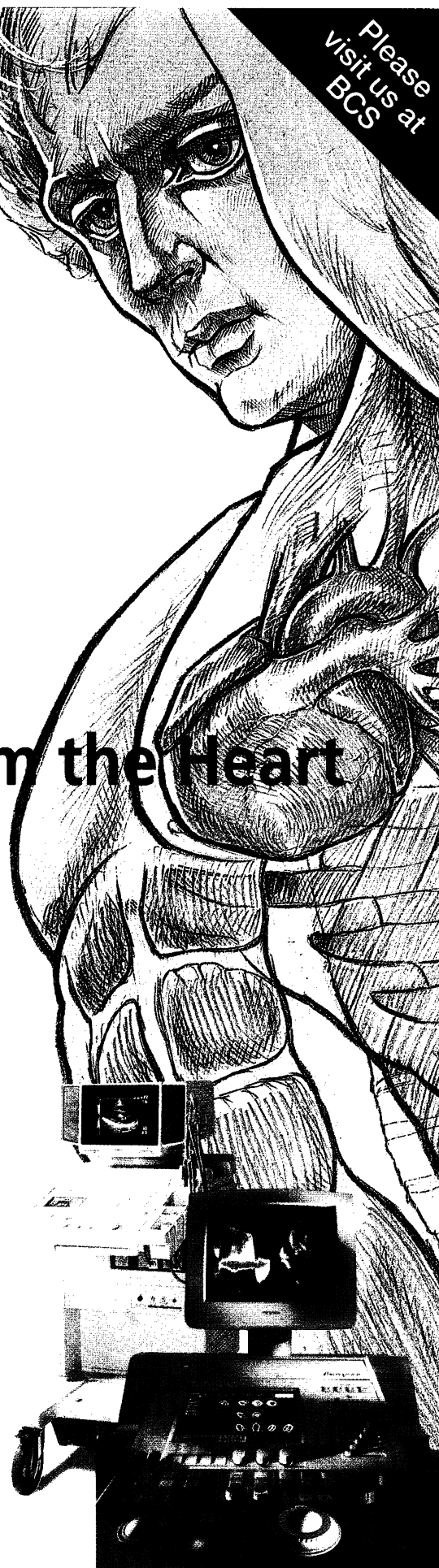
### NEW MULTI PLANE TEE

Toshiba's New Multi-Frequency Multi-Plane TEE transducer utilises new super ceramics to increase sensitivity. Its unique array matrix reduces side lobes for increased resolution and higher clarity PW and CW (steerable) Doppler.



### NEW SSH - 140A SUPER HG

The Super HG version of the SSH -140A can be configured as a dedicated Paediatric System utilising new high frequency sectors, Micro and Tee transducers or as a general purpose echo system with multi-plane TEE and adult phased array of transducers. Its compact design makes it ideal for taking to CCU. **Toshiba. Made for Life.**



# TOSHIBA

Toshiba Medical Systems (UK) Ltd: Manor Court, Manor Royal, Crawley, West Sussex RH10 2PY. Tel. (01293) 560772, Fax (01293) 560791.  
Scottish Office: Unit 2a, Hillside House, Laurelhill Business Park, Stirling FK7 9JQ. Tel. (01786) 449447, Fax (01786) 449443.

# SYSTEM FIVE

Brand

## The Vingmed System Five: Your Connection to the Future.

Advanced Ultrasound Diagnosis requires the finest, limitless technology. Treating the future not as a vision but as a rational implication of time, Vingmed, an active worldwide partner in the dialogue with clinical users for years, launches its latest creation: System Five. – With Multi-Array



Digital Beamforming, a revolutionary System Architecture and no upgrade limitation, Vingmed offer more safety, more precision and more efficient diagnoses. System Five: For us the synonym of technology, experience and innovation; for you the connection to the future.

SONOTRON LIMITED, 2 Napier Road, Bedford MK41 OJW, Tel.: (0234) 340881  
SONOTRON European Headquarters, CH-6304 Zug, Tel.: (+41) 42 41 64 64

**VINGMED**SOUND