

**Results** Patients in the third HS-TnT tercile were 6 times more likely to sustain a cardiovascular event compared to those in the first tercile [unadjusted RR 6.11 (95% CI 2.98 to 12.50)]. A high HS-TnT predicted adverse clinical outcomes independent of conventional risk factors, left ventricular dysfunction and left ventricular hypertrophy on echocardiography [adjusted RR 2.69 (95% CI 1.45 to 5.00)]. Patients with persistent HS-TnT elevation at 7 weeks were also at an increased risk of cardiovascular events compared to those with an initial high HS-TnT which then normalised [unadjusted RR 3.39 (95% CI 2.02 to 5.68)].

**Conclusion** We have demonstrated for the first time the prognostic utility of a single 7-week HS-TnT measurement in routine ACS patients and that it could be used to assist medium term risk stratification in this patient cohort. Future studies should evaluate whether tailoring specific treatment interventions to higher risk individuals as identified by an elevated HS-TnT during the convalescence phase of ACS would improve clinical outcomes.

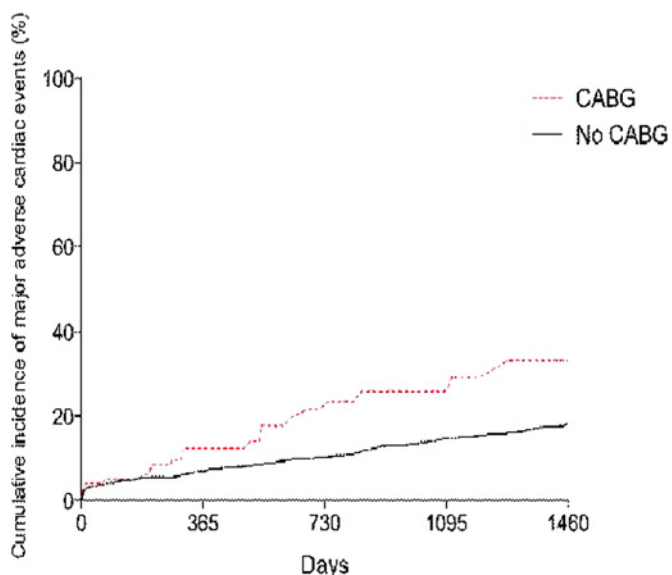
### 130 PRIOR CORONARY ARTERY BYPASS GRAFT PATIENTS TREATED WITH PRIMARY PERCUTANEOUS CORONARY INTERVENTION HAVE HIGHER LONG-TERM ADVERSE EVENT RATES

doi:10.1136/heartjnl-2012-301877b.130

S M Hamshere,\* D A Jones, M Akhtar, K S Rathod, A Graham, O Guttmann, S Gallagher, A Jain, C Knight, A Mathur, A Wrang. *London Chest Hospital, London, UK*

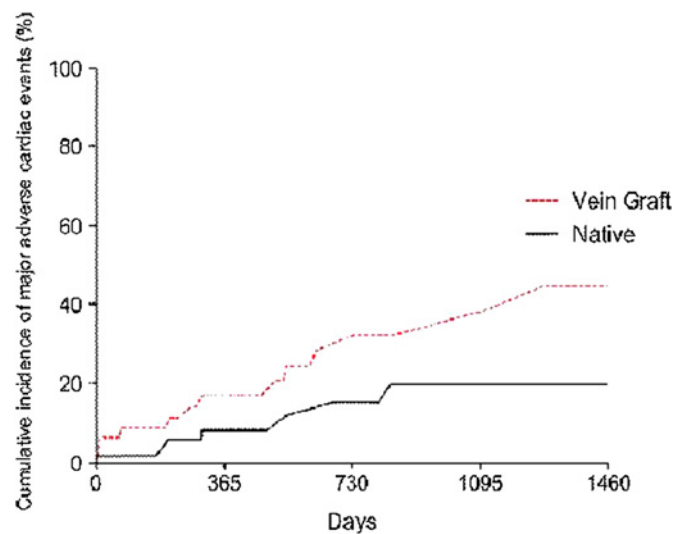
**Background** Limited information exists regarding procedural success and clinical outcomes of ST-segment elevation myocardial infarction (STEMI) patients with previous CABG undergoing primary PCI. We sought to compare outcomes in STEMI patients undergoing primary percutaneous coronary intervention (PCI) with or without previous coronary artery bypass grafts (CABG).

**Methods** Clinical information was analysed from a prospective database on 2322 STEMI patients who underwent Primary PCI between January 2004 and May 2010 at a London centre. 104 of 2322 (4.5%) patients had prior CABG. MACE was defined as a composite of death, stroke and target vessel revascularisation (TVR). Outcome assessed by all-cause mortality information provided by the Office of National Statistics via the BCIS CCAD national audit.



Abstract 130 Figure 1

**Results** Patients with previous CABG were older, had more associated comorbidity and a higher incidence of multivessel coronary disease than patients who have never had CABG. In patients with previous CABG, the infarct related artery (IRA) was split evenly between a bypass graft (n=50) and a native vessel (n=54). Procedural success (defined as TIMI 3 flow at the end of procedure) was less likely in patients with previous CABG 84.5% vs 95.6% (p<0.0001) than in patients who had never undergone CABG. Patients with previous CABG had more MACE (32.8% vs 16.5%, p=0.01) during the 4-year follow-up period (Abstract 130 figure 1). After multivariable adjustment this difference persisted (HR 2.2, 95% CI 1.26 to 3.78, p=0.02). When stratifying prior CABG patients by the type of IRA (Abstract 130 figure 2); Long term MACE were significantly more likely in patients who had bypass graft PCI than in patients that had native vessel PCI (44.6% vs 19.8%, p=0.04).



Abstract 130 Figure 2

**Conclusions** Previous CABG patients with STEMI treated with primary PCI have higher long-term adverse events. The long-term event rates are higher still if the IRA is a bypass graft.

### 131 MULTIVESSEL CORONARY DISEASE IN PRIMARY PERCUTANEOUS INTERVENTION. REVASCUARISATION STRATEGY AND ITS IMPACT ON MEDIUM TERM MORTALITY

doi:10.1136/heartjnl-2012-301877b.131

A E Alahmar,\* A S Banning, N S Rajendra, B Wrigley, K Pujara, A H Gershlick. *Glenfield Hospital, University Hospitals of Leicester NHS Trust, Leicester, UK*

**Introduction** The optimal revascularisation strategy for patients presenting with ST-Segment Elevation MI (STEMI) and multivessel coronary disease remains under debate. Although current practice in patients without cardiogenic shock is to treat the infarct-related artery only at the time of presentation, it is not clear whether residual coronary disease should be treated either during the acute admission or post-discharge.

**Methods** All Patients presenting to UHL between April 2008 and November 2011 with STEMI undergoing Primary PCI were analysed retrospectively. The outcome measure was mortality either in-hospital or post-discharge. All patients were followed-up until end of November 2011, follow-up duration is expressed as mean±SD. Patients were divided into three groups; PCI for single vessel disease (SVD), Multivessel disease (MVD) & single vessel PCI and MVD & multivessel PCI. Baseline characteristics (age, gender, risk factors,