

SUPPLEMENTARY DATA

Supplementary Table 1: Baseline characteristics of patients with ACEI or ARB use at baseline. BMI, body mass index; CABG, coronary artery bypass graft; TIA, transient ischemic attack; MI, myocardial infarction.

Supplementary Table 2: Baseline characteristics comparison between patients included and excluded for propensity analysis.

Supplementary Table 3: Demographics and clinical characteristics comparison between ACEIs vs ARBs users cohorts matched on their propensity score.

MI: myocardial infarction.

Supplementary Figure 1: Absolute standardized differences (%) of variables between ACEIs users and ARBs users, before and after propensity score matching.

An absolute standardized difference lower than 10% reveals well-balanced groups. MI, myocardial infarction.

Supplementary Figure 2: Risks of outcomes in ACEI vs. ARB cohorts according to the number of cardioprotective treatments (ACEI or ARB, statins, β -blockers, antiplatelet agents) in propensity score-adjusted analysis.

CV, cardiovascular; MI, myocardial infarction.

Supplementary Figure 3: Risks of outcomes in ACEI vs. ARB cohorts according to the number of cardioprotective treatments (ACEI or ARB, statins, β blockers, antiplatelet agents) in propensity score-matched analysis.

CV, cardiovascular; MI, myocardial infarction.

	All patients n = 40 625	Patients with ACEI use n = 27 589	Patients with ARB use n = 13 036	P value of comparison
Sex (male)	25712 (63.3%)	18319 (66.4%)	7393 (56.7%)	<.001
Age	68.4 (9.96)	67.85 (10.04)	69.59 (9.68)	<.001
BMI (kg/m ²)	28.62 (5.62)	28.52 (5.85)	28.6 (5.61)	.098
REACH CV risk score	10.32 (3.35)	10.44 (3.43)	10.06 (3.17)	<.001
GFR	83.59 (46.63)	84.57 (45)	81.56 (49.78)	<.001
Region				
North America	16602 (40.9%)	11112 (40.3%)	5490 (42.1%)	<.001
Latin America	1160 (2.9%)	778 (2.8%)	382 (2.9%)	
Eastern Europe	4230 (10.4%)	4053 (14.7%)	177 (1.4%)	
Western Europe	10765 (26.5%)	7516 (27.2%)	3249 (24.9%)	
Middle East	578 (1.4%)	436 (1.6%)	142 (1.1%)	
Japan	2278 (5.6%)	786 (2.8%)	1492 (11.4%)	
Asia	3302 (8.1%)	1779 (6.4%)	1523 (11.7%)	
Australia	1710 (4.2%)	1129 (4.1%)	581 (4.5%)	
Medical history				
Current smoker	5579 (14.1%)	4010 (14.9%)	1569 (12.4%)	<.001
History of hypertension	37092 (91.3%)	24807 (89.9%)	12285 (94.2%)	<.001
Hypercholesterolemia	30426 (75%)	20671 (75%)	9755 (74.9%)	.808
Obese	13227 (33%)	9012 (33.1%)	4215 (32.8%)	.597
Congestive heart failure	6479 (16.2%)	4744 (17.5%)	1735 (13.6%)	<.001
Atrial fibrillation/flutter	4454 (11.2%)	3176 (11.7%)	1278 (10%)	<.001
History of stable angina	12251 (30.6%)	8820 (32.4%)	3431 (26.7%)	<.001
History of unstable angina	5251 (13.1%)	3917 (14.4%)	1334 (10.4%)	<.001
Coronary artery disease	24537 (60.4%)	17615 (63.8%)	6922 (53.1%)	<.001
Cerebrovascular disease	10698 (26.3%)	7207 (26.1%)	3491 (26.8%)	.160
Peripheral artery disease	4651 (11.4%)	3221 (11.7%)	1430 (11%)	.037
History of coronary angioplasty/stenting	10225 (25.4%)	7224 (26.4%)	3001 (23.2%)	<.001
History of CABG	8356 (20.7%)	5969 (21.7%)	2387 (18.4%)	<.001
History of TIA	4981 (12.5%)	3393 (12.6%)	1588 (12.5%)	.777
History of MI	13518 (33.7%)	10137 (37.1%)	3381 (26.3%)	<.001
History of stroke	7708 (19.2%)	5208 (19.1%)	2500 (19.4%)	.428
Diabetes	19648 (48.7%)	12990 (47.4%)	6658 (51.4%)	<.001
Baseline medication				
Acetyl salicylic acid	27892 (68.7%)	19605 (71.1%)	8287 (63.6%)	<.001
At least one antiplatelet	32231 (79.4%)	22276 (80.8%)	9955 (76.4%)	<.001
Statins	29446 (72.5%)	20246 (73.4%)	9200 (70.6%)	<.001
Beta blockers	19925 (49.1%)	14389 (52.2%)	5536 (42.5%)	<.001
Calcium channel blockers	13371 (33%)	8437 (30.6%)	4934 (37.9%)	<.001

Nitrates/other anti-angina agents	9963 (24.8%)	7217 (26.5%)	2746 (21.3%)	<.001
Diuretics	19058 (47%)	12514 (45.4%)	6544 (50.2%)	<.001
Other anti-hypertensives	3544 (8.7%)	2287 (8.3%)	1257 (9.7%)	<.001
Insulin	5501 (13.6%)	3690 (13.4%)	1811 (13.9%)	.164
Other antidiabetic agents	2098 (5.2%)	1243 (4.6%)	855 (6.6%)	<.001
Biguanides	8609 (21.3%)	5821 (21.2%)	2788 (21.5%)	.516
Sulfonylureas	8979 (22.2%)	5896 (21.5%)	3083 (23.7%)	<.001
Thiazolidinediones	3593 (8.9%)	2273 (8.3%)	1320 (10.2%)	<.001

Supplementary Table 1: Baseline characteristics of patients with ACEI or ARB use at baseline

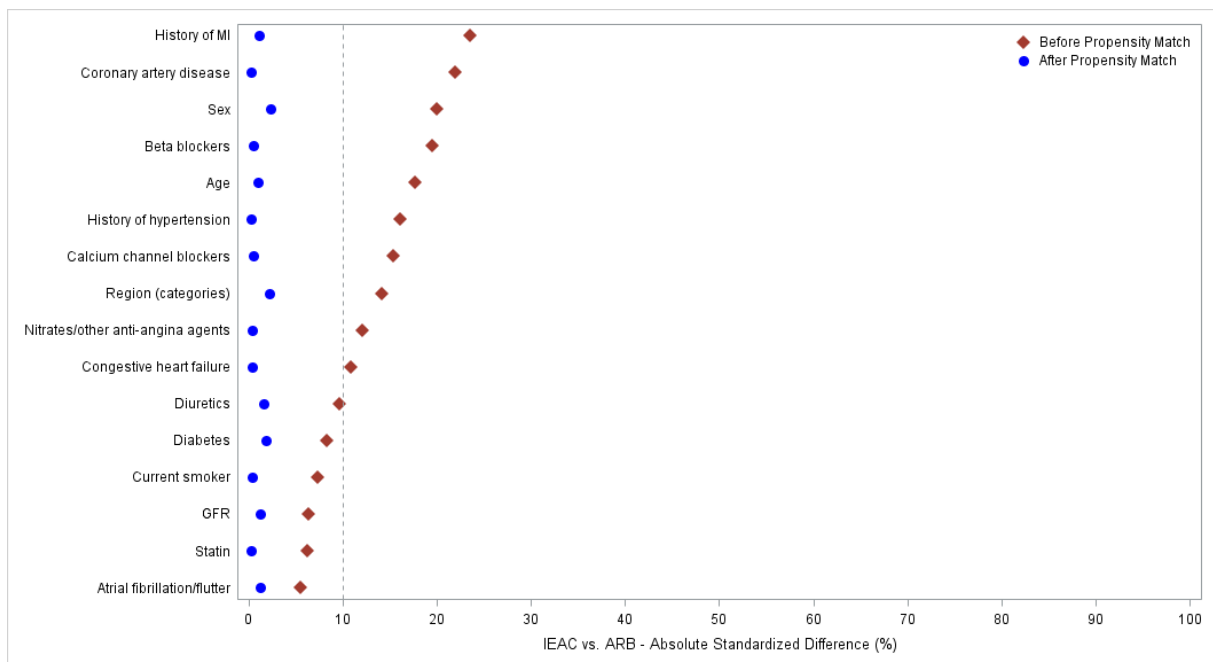
BMI, body mass index; CABG, coronary artery bypass graft; TIA, transient ischemic attack; MI, myocardial infarction.

	Patients included in propensity analysis n = 30,584	Patients excluded from propensity analysis n = 10,041
Sex (male)	19198 (62.8%)	6514 (65%)
Age	68.38 (9.99)	68.5 (9.85)
GFR	83.78 (46.5)	81.16 (48.25)
Region		
North/Latin America - Western Europe Asia -Australia	24676 (80.7%)	8863 (88.3%)
Eastern Europe - Middle East - Japan	5908 (19.3%)	1178 (11.7%)
Medical history		
Atrial fibrillation/flutter	3443 (11.3%)	1011 (11%)
Coronary artery disease	18456 (60.3%)	6081 (60.6%)
Congestive heart failure	5077 (16.6%)	1402 (15%)
Current smoker	4339 (14.2%)	1240 (14%)
Diabetes	15524 (50.8%)	4263 (42.5%)
History of hypertension	27967 (91.4%)	9125 (90.9%)
History of MI	10295 (33.7%)	3223 (33.7%)
Baseline medication		
Acetyl salicylic acid	21271 (69.5%)	6621 (66.2%)
Diuretics	14811 (48.4%)	4247 (42.5%)
Nitrates/other anti-angina agents	7695 (25.2%)	2268 (23.7%)
Calcium channel blockers	10355 (33.9%)	3016 (30.2%)
Statins	22567 (73.8%)	6879 (68.7%)
Beta blockers	15273 (49.9%)	4652 (46.5%)

Supplementary Table 2: Baseline characteristics comparison between patients included and excluded for propensity analysis.

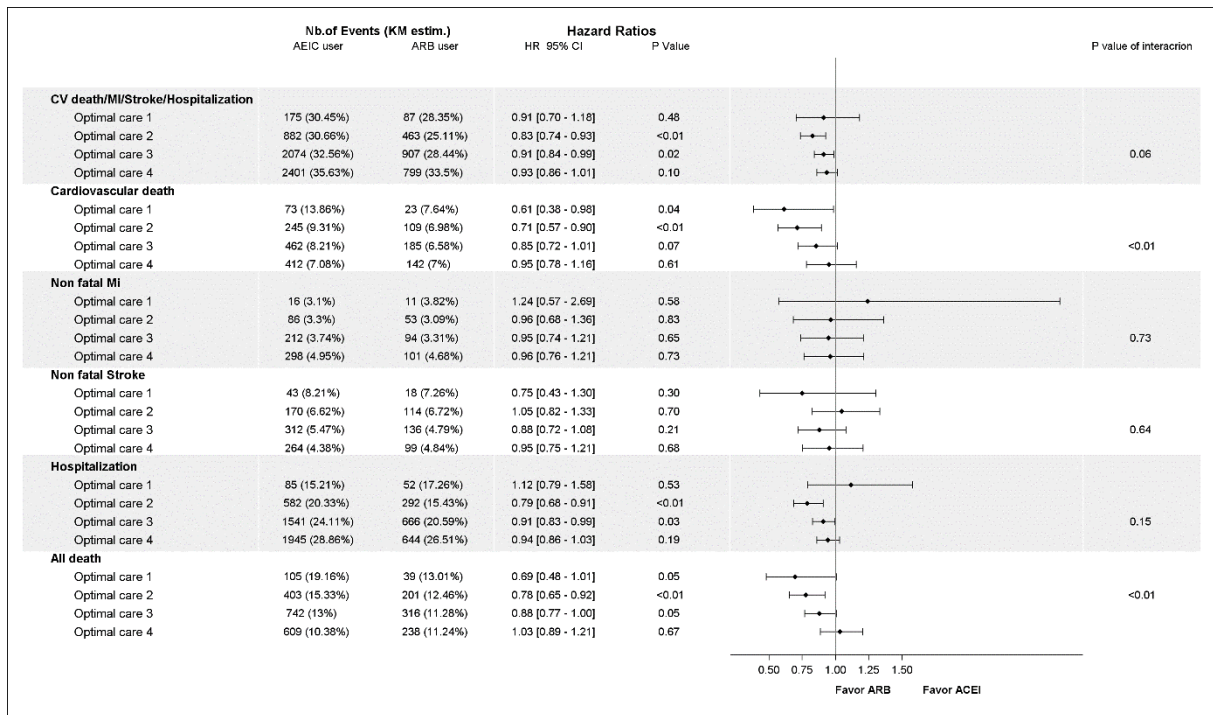
	Patients with ACEI use n = 9,902	Patients with ARB use n = 9,902	P value of comparison
Sex (male)	5670 (57.3%)	5556 (56.1%)	0.10
Age	69.72 (9.69)	69.63 (9.71)	0.49
GFR	82.19 (45.16)	81.58 (49.5)	0.37
Region			
North/Latin America - Western Europe - Asia -Australia	8476 (85.6%)	8397 (84.8%)	0.11
Eastern Europe - Middle East - Japan	1426 (14.4%)	1505 (15.2%)	
Medical History			
Atrial fibrillation/flutter	1023 (10.3%)	985 (9.9%)	0.37
Coronary artery disease	5227 (52.8%)	5213 (52.6%)	00.84
Congestive heart failure	1379 (13.9%)	1365 (13.8%)	0.77
Current smoker	1251 (12.6%)	1239 (12.5%)	0.79
Diabetes	5399 (54.5%)	5309 (53.6%)	0.19
History of hypertension	9346 (94.4%)	9352 (94.4%)	0.85
History of MI	2542 (25.7%)	2593 (26.2%)	0.40
Baseline Medication			
Acetyl salicylic acid	6432 (65%)	6375 (64.4%)	0.39
Diuretics	5022 (50.7%)	5102 (51.5%)	0.25
Nitrates/other anti-angina agents	2094 (21.1%)	2108 (21.3%)	0.80
Calcium channel blockers	3836 (38.7%)	3812 (38.5%)	0.72
Statins	7114 (71.8%)	7125 (72%)	0.86
Beta blockers	4224 (42.7%)	4249 (42.9%)	0.71

Supplementary Table 3: Demographics and clinical characteristics comparison between ARB vs. ACEI users cohorts matched on their propensity score.
MI: myocardial infarction.

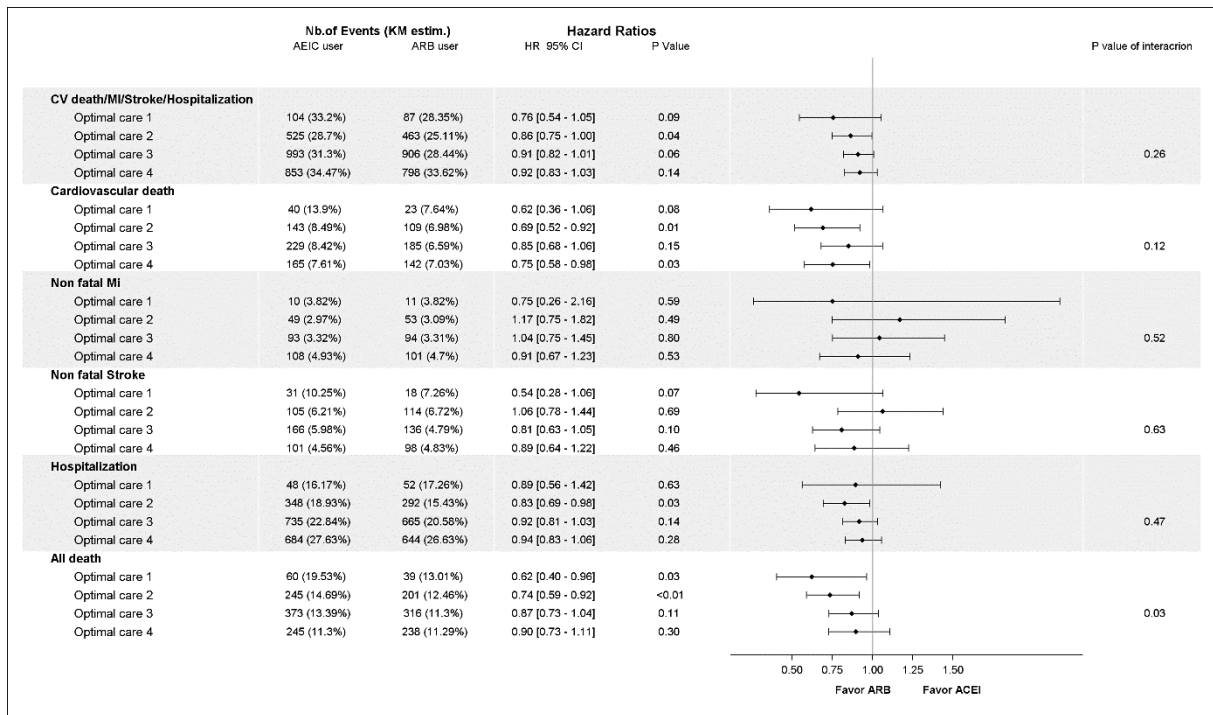


Supplementary Figure 1: Absolute standardized differences (%) of variables between ACEIs users and ARBs users, before and after propensity score matching.

An absolute standardized difference lower than 10% reveals well-balanced groups. MI, myocardial infarction.



Supplementary Figure 2: Risks of outcomes in ACEI vs. ARB cohorts according to the number of cardioprotective treatments (ACEI or ARB, statins, β -blockers, antiplatelet agents) in propensity score-adjusted analysis.
 CV, cardiovascular; MI, myocardial infarction.



Supplementary Figure 3: Risks of outcomes in ACEI vs. ARB cohorts according to the number of cardioprotective treatments (ACEI or ARB, statins, β blockers, antiplatelet agents) in propensity score-matched analysis.
 CV, cardiovascular; MI, myocardial infarction.