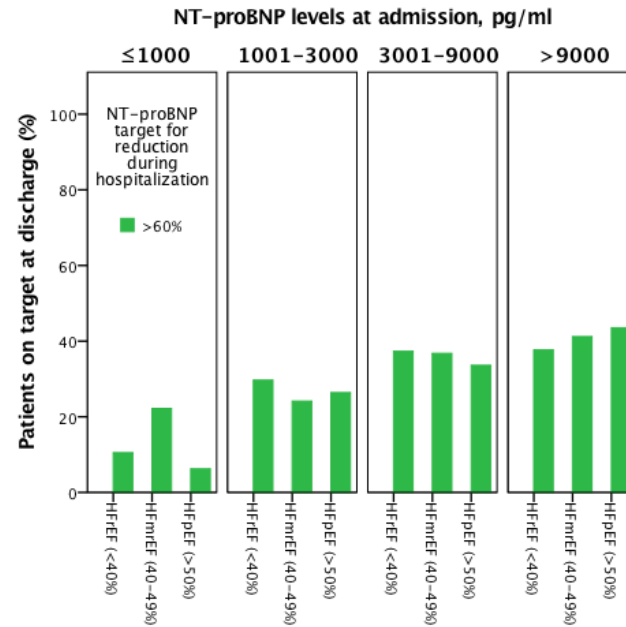
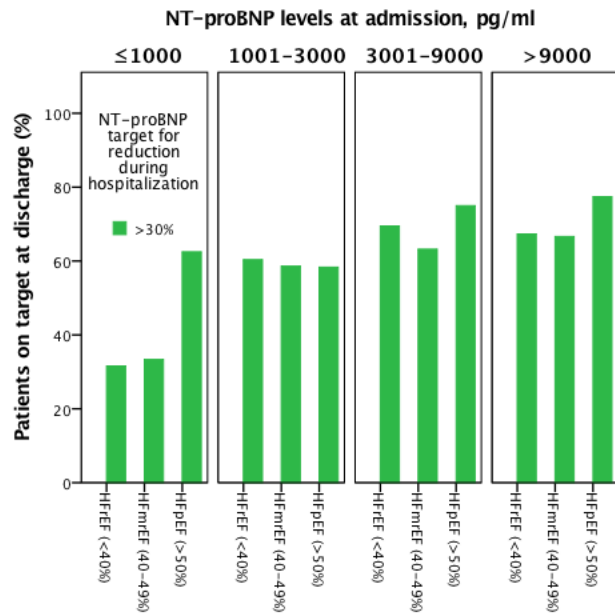
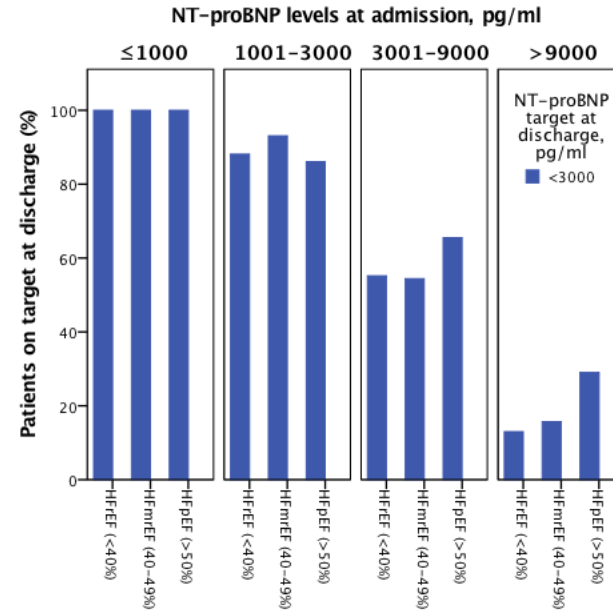
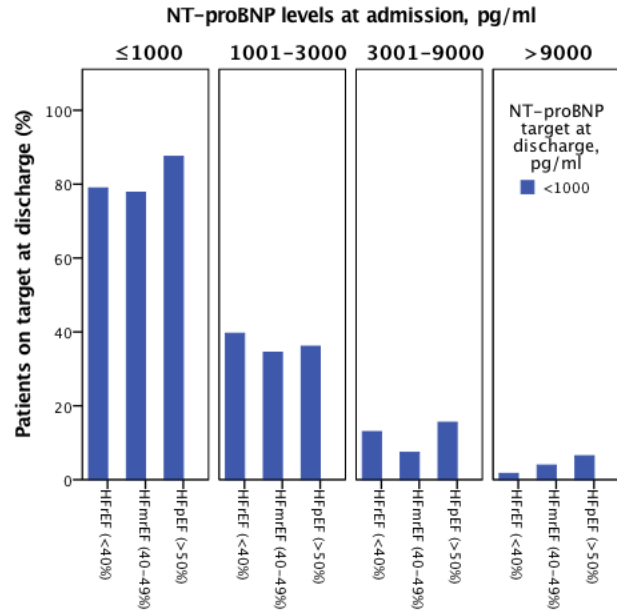
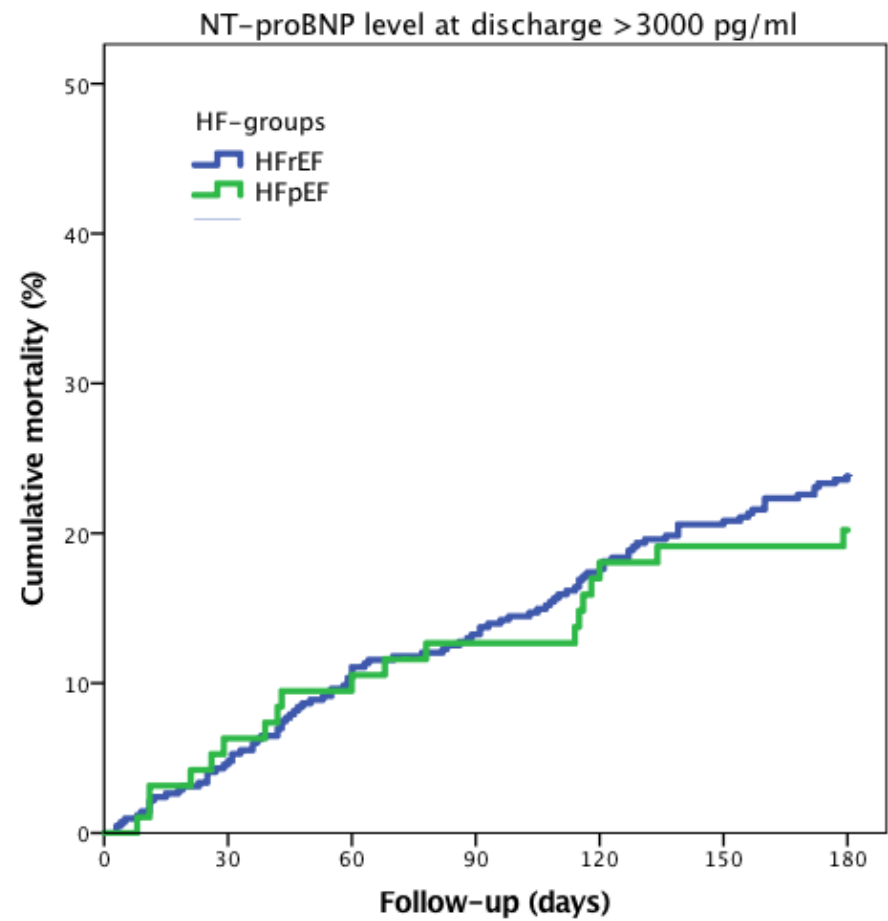
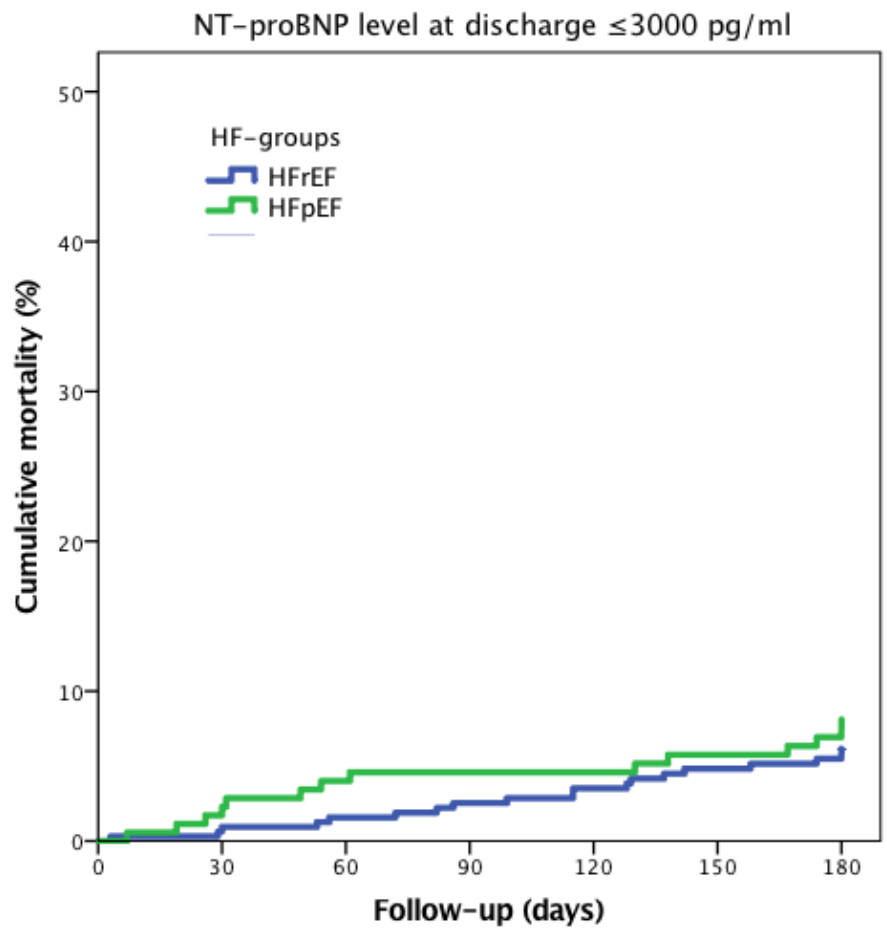
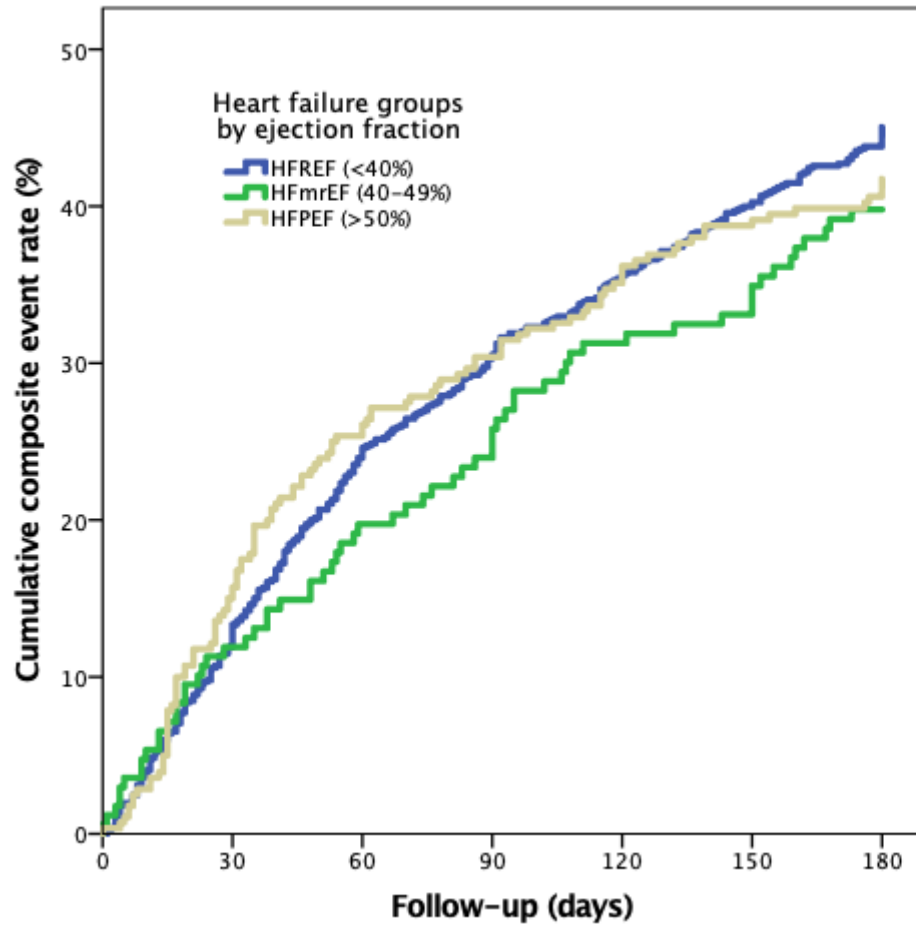


Supplement figure 1. Influence of admission NT-proBNP levels on the percentage of patients attaining different NT-proBNP targets. Abbreviations as in figures 1 and 2.





Supplement figure 2. Comparison between HF-groups according to NT-proBNP levels at discharge. Abbreviations as in figures 1 and 2.



Supplement figure 3. Relationship between 6-months composite event rate (cardiovascular readmission/ all-cause mortality) and the three types of heart failure. HFpEF = heart failure with preserved ejection fraction; HFmrEF = heart failure with mid-range ejection fraction; HFREF = heart failure with reduced ejection fraction.