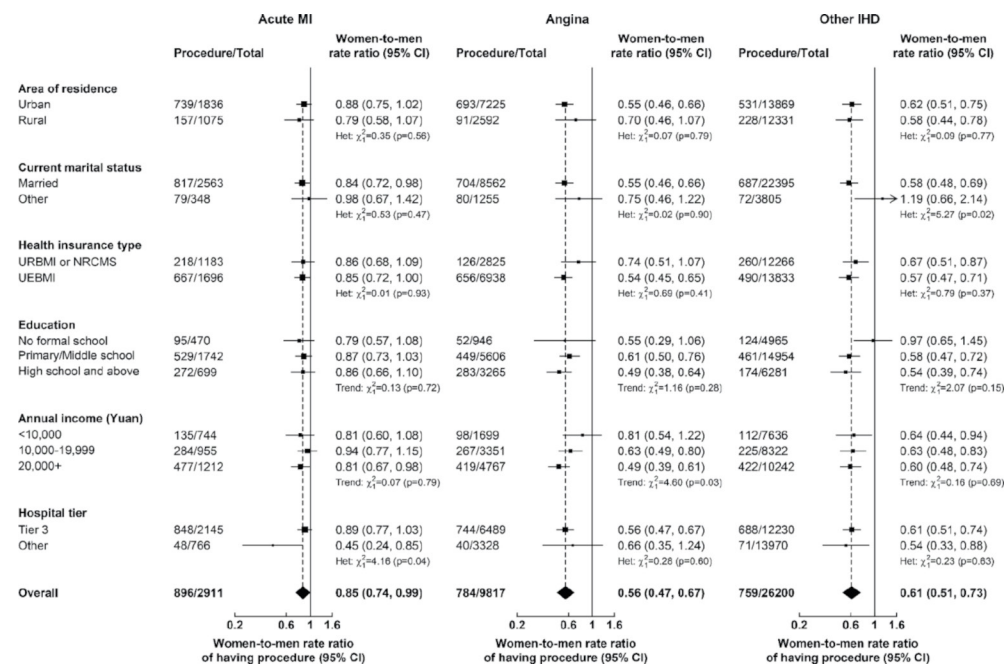


## Correction: Gender differences in use of invasive diagnostic and therapeutic procedures for acute ischaemic heart disease in Chinese adults

Levy M, Chen Y, Clarke R, *et al.* Gender differences in use of invasive diagnostic and therapeutic procedures for acute ischaemic heart disease in Chinese adults. *Heart* 2022;108:292–299.

This article has been corrected since it was first published. In Figure 3, the women-to-men rate ratios by hospital tier for Angina and Other IHD were inverted between ‘Tier 3’ and ‘Other’. This has now been corrected and the new figure is below:



Additionally, the supplementary appendix has been resupplied to make the following corrections to eFigure 1 and eFigure 7:

A: Acute MI: women-to-men rate ratios for other (non-married) should be 1.02 (0.68, 1.53) instead of 0.77 (0.66, 0.91)

C: Other IHD: women-to-men rate ratios for other hospital tiers should be 0.83 (0.55, 1.24) instead of 0.89 (0.73, 1.09).



OPEN ACCESS

**Open access** This is an open access article distributed in accordance with the Creative Commons Attribution 4.0 Unported (CC BY 4.0) license, which permits others to copy, redistribute, remix, transform and build upon this work for any purpose, provided the original work is properly cited, a link to the licence is given, and indication of whether changes were made. See: <https://creativecommons.org/licenses/by/4.0/>.

© Author(s) (or their employer(s)) 2022. Re-use permitted under CC BY. Published by BMJ.

*Heart* 2022;108:e6. doi:10.1136/heartjnl-2021-318988corr1

