

THE FOUR RESULTS THAT MATTER.

In echocardiology.

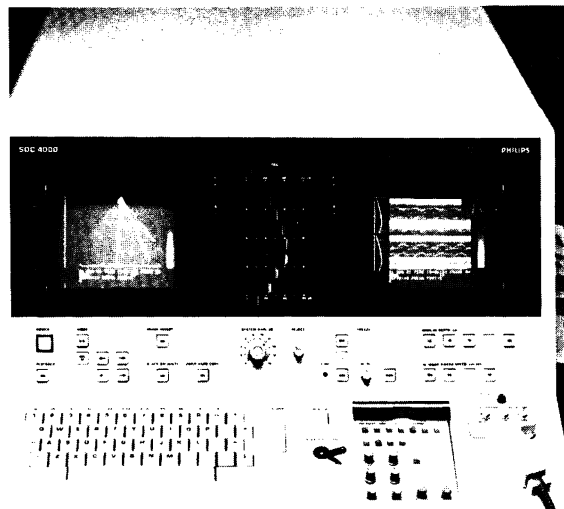
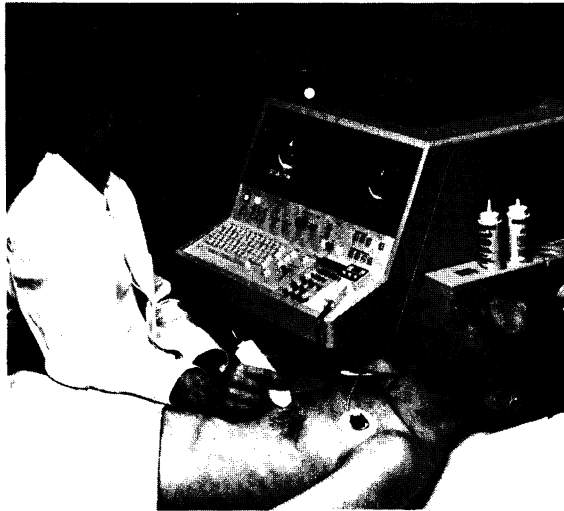
The potential of diagnostic information to be gained by echocardiology is extraordinary. To exploit it fully the ultrasound system employed has to provide "multiple choice" in terms of display, freeze and recording modes. In addition the scanning system has to make the best use of the anatomical "windows" open to ultrasound. And the system has to be easily mobile for fast application where it is needed.

This system is available now. The Sono DIAGNOST C 4000 is a compact mobile unit for echocardiology. This advanced phased array system enables display and storage of two separate images.

It offers three basic modes:

- 2-D on both monitors
- Single M-mode and simultaneous 2-D on main monitor with 2-D on reference monitor.
- Dual M-mode and simultaneous 2-D on main monitor with 2-D on reference monitor.

ECG and alphanumerical data can be displayed together with 2-D.



ECG, phono and pulse, together with alphanumerical data, can be displayed with the M-mode.

The freeze modes are equally versatile:

- Manual freeze
- ECG triggered strobe mode
- ECG dual trigger mode in one cardiac cycle.

Remote and automatic recording covers: Sector and M-mode in real-time and freeze on video recorder. M-mode and video hardcopy of sector or M-mode on strip chart recorder.

Many additional unique features facilitate operation for fast results of optimum diagnostic confidence. For detailed information please contact us.

Philips Medical Systems cover the range of advanced diagnostic imaging and radiation therapy.

**Philips Industries
Medical Systems Division,
QM-336
Marketing Communications
Dept., Eindhoven
the Netherlands**

PHILIPS




**Medical
Systems**

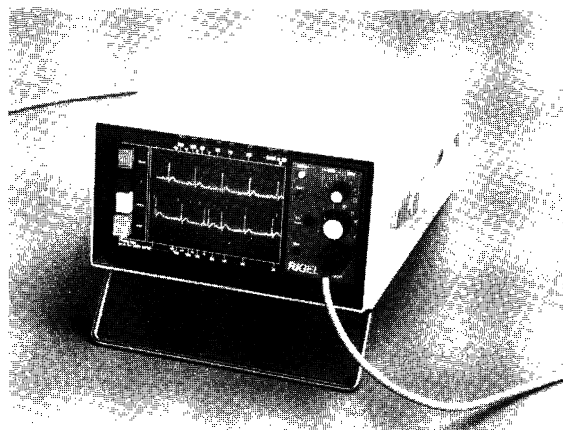
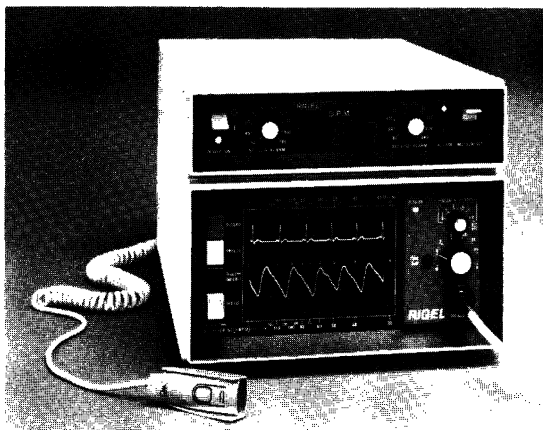
For U.K. enquiries: Philips Medical Systems Ltd.,
Kelvin House, 63-75 Glenthorne Road, Hammersmith,
London W6 0LJ.

COMPACT & RELIABLE RIGEL DUAL CHANNEL MONITORS

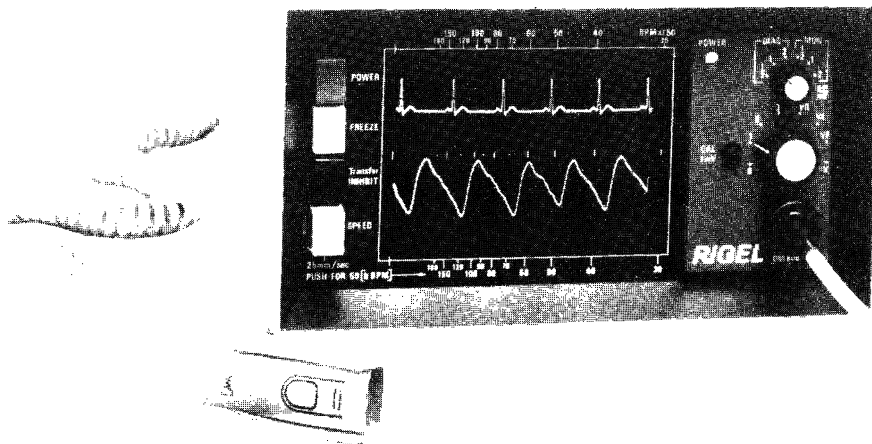
PRESSURE 

PULSE 

CASCADE 




Mains or Battery powered



Full range of monitors available, including digital displays

For further information contact:

Rigel Research Ltd., 99 Gander Green Lane, Sutton, Surrey. Tel: 01-642 2288/9

A member of the  Universal Health Care group of companies