

---

**Springer is proud  
to introduce this  
excellent piece of work  
to the scientific community**

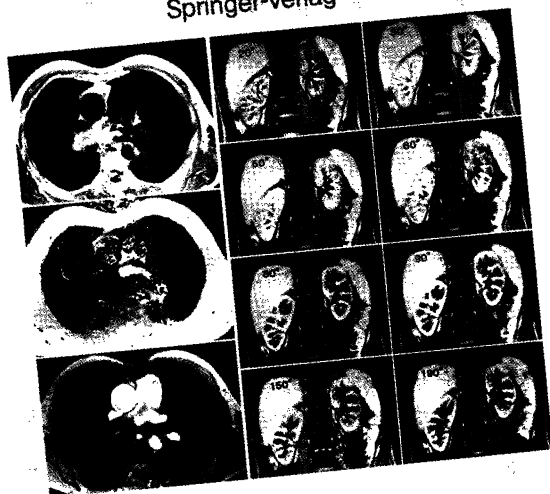
---

G. K. von Schulthess

# Morphology and Function in MRI

Cardiovascular and Renal Systems

Springer-Verlag



With a Foreword by W. A. Fuchs and A. Margulis  
1989. XV, 144 pp. 155 figs. in 273 sep. illus.  
Hardcover DM 168,- ISBN 3-540-19061-9

This book on the morphology and function of the cardiovascular and renal systems as studied by MRI provides the reader with a comprehensive overview of the functional and hemodynamic aspects of the cardiovascular system and their effects on MRI. Magnetic resonance morphology and function of the heart and vascular system are discussed in two separate chapters. Renal morphology and function are analyzed in great detail both in normal patients and in pathological conditions, particularly in relation to the excretion of contrast material. The introductory physics chapter provides the basic notions of the physics and technology of magnetic resonance, which are essential for understanding concepts of motion and flow in MRI.

Based on extensive personal experience, the author succeeds brilliantly in providing a comprehensive insight into the problems of functional MRI of the cardiovascular system and the kidney. This book describes the current state of the art and supplies an essential baseline for future research in MRI of cardiovascular disease.

---

*This work was awarded  
the "Jubiläumspreis" of the Swiss Society of Radiology and Nuclear Medicine  
upon its 75th anniversary*

---

Springer-Verlag Berlin Heidelberg New York London Paris Tokyo Hong Kong

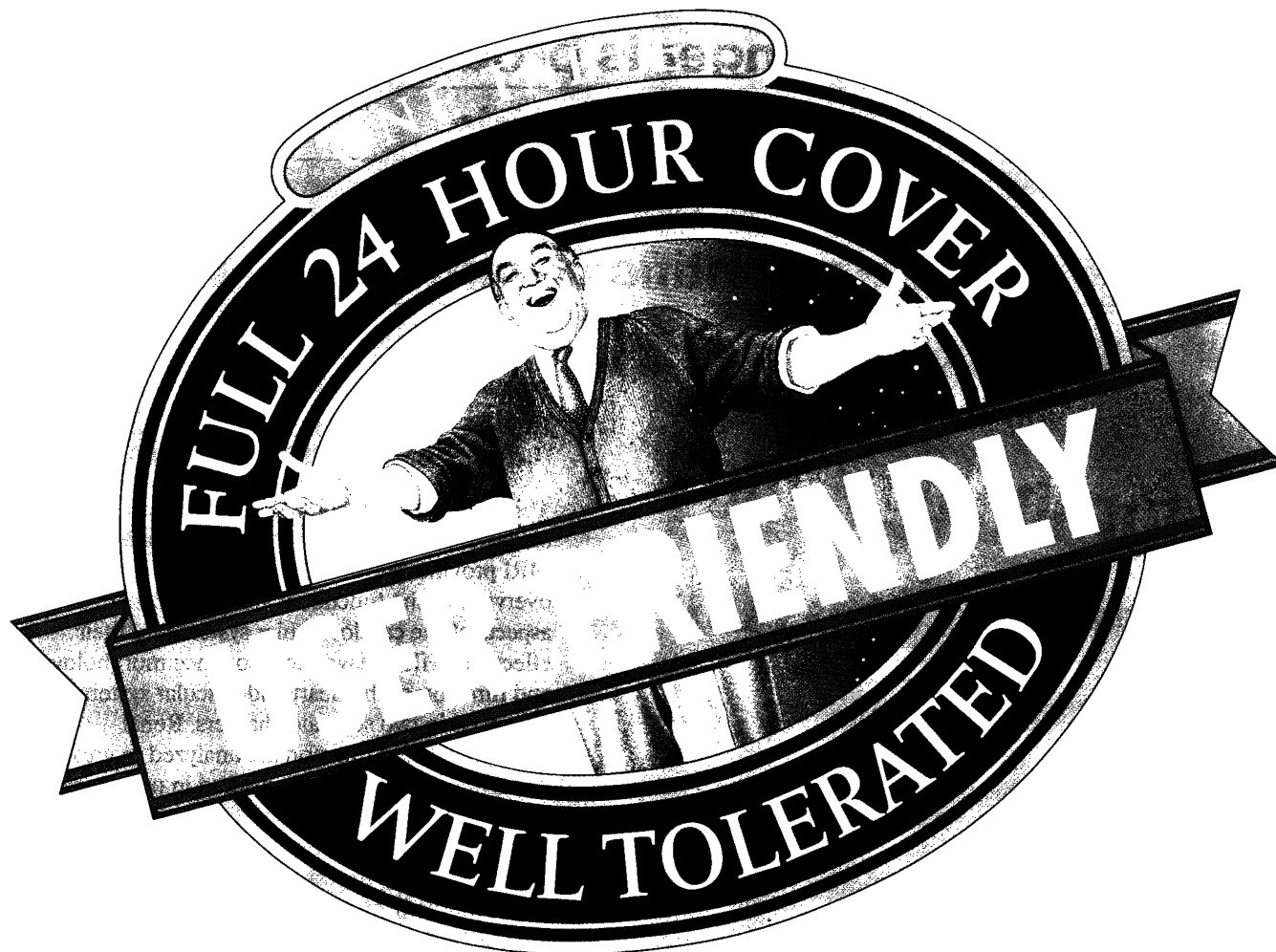
Heidelberger Platz 3, D-1000 Berlin 33 · 175 Fifth Ave., New York, NY 10010, USA · 8 Alexandra Rd., London SW19 7JZ, England ·  
26, rue des Carmes, F-75005 Paris · 37-3, Hongo 3-chome, Bunkyo-ku, Tokyo 113, Japan · Citicorp Centre, Room 1603,  
18 Whitfield Road, Causeway Bay, Hong Kong

**Springer**



tm:5568/4/1

# ISTIN • A BRAND NEW CALCIUM ANTAGONIST



New Istin, a product of Pfizer Research in the UK, is a once daily calcium antagonist with a 24-hour action.

In chronic stable angina, this means continuous cover even during that critical early morning period,<sup>1</sup> when plasma concentrations of other agents are often low.

In hypertension, a single tablet of Istin provides control of blood pressure throughout the 24-hour dosing period – a control that retains the normal diurnal pattern.<sup>2</sup>

Istin also offers a new level of tolerability. In placebo-controlled trials of almost 3,000 subjects, only 1.1% of 1,775 Istin treated subjects (mean maximum dose 7.6mg/day) withdrew due to side-effects.<sup>3</sup>

Istin is associated with a low incidence of adverse vasodilator effects.

Istin is the new user friendly calcium antagonist for angina and hypertension.

## FULL 24 HOUR COVER IN ANGINA AND HYPERTENSION

**ABBREVIATED PRESCRIBING INFORMATION FOR ISTIN\***: INDICATIONS: FIRST-LINE TREATMENT OF HYPERTENSION AND MYOCARDIAL ISCHAEMIA ASSOCIATED WITH STABLE ANGINA PECTORIS. DOSAGE: FOR HYPERTENSION AND ANGINA, INITIAL DOSAGE 5MG ORALLY ONCE DAILY WHICH MAY BE INCREASED TO A MAXIMUM DAILY DOSE OF 10MG. USE IN CHILDREN: NOT RECOMMENDED. USE IN THE ELDERLY: NORMAL DOSAGE. USE IN RENAL IMPAIRMENT: NORMAL DOSAGE. USE IN HEPATIC IMPAIRMENT: DOSAGE RECOMMENDATIONS HAVE NOT BEEN ESTABLISHED. USE WITH CAUTION. CONTRA-INDICATIONS: KNOWN SENSITIVITY TO DIHYDROPYRIDINES. WARNINGS AND PRECAUTIONS: PREGNANCY AND LACTATION: ISTIN SHOULD NOT BE ADMINISTERED DURING PREGNANCY OR LACTATION, OR TO WOMEN OF CHILD-BEARING POTENTIAL UNLESS EFFECTIVE CONTRACEPTION IS USED. SIDE-EFFECTS: FLUSHING, OEDEMA, FATIGUE, HEADACHE, DIZZINESS AND NAUSEA. PACKAGE QUANTITIES AND BASIC NHS COST: 5MG TABLETS CALENDAR PACK OF 28 £11.85 (PL 0057/0297); 10MG TABLETS CALENDAR PACK OF 28 £17.70 (PL 0057/0298). FURTHER INFORMATION ON REQUEST. REFERENCES: 1. GOTTLIEB SO, J CARDIOVASC PHARMACOL, 1988, 12 (SUPPL. 7): S18-S21. 2. MIROCEZ WJ ET AL, J CARDIOVASC PHARMACOL, 1988, 12 (SUPPL. 7): S79-S84. 3. OSTERLOH I, AM HEART J, 1989, 118, 1114-1120. PFIZER LIMITED, SANDWICH, KENT.



\*Istin is a Registered trade mark