

www.heartjnl.com

Heart

Cardiovascular medicine

- Second harmonic imaging *p 131, 133*
- Stress echocardiography *p 141*
- Heart failure *p 147, 152, 161*
- Tilt testing *p 181*

Interventional cardiology and surgery

- Long term follow up of VSD closure *p 198*

Basic research

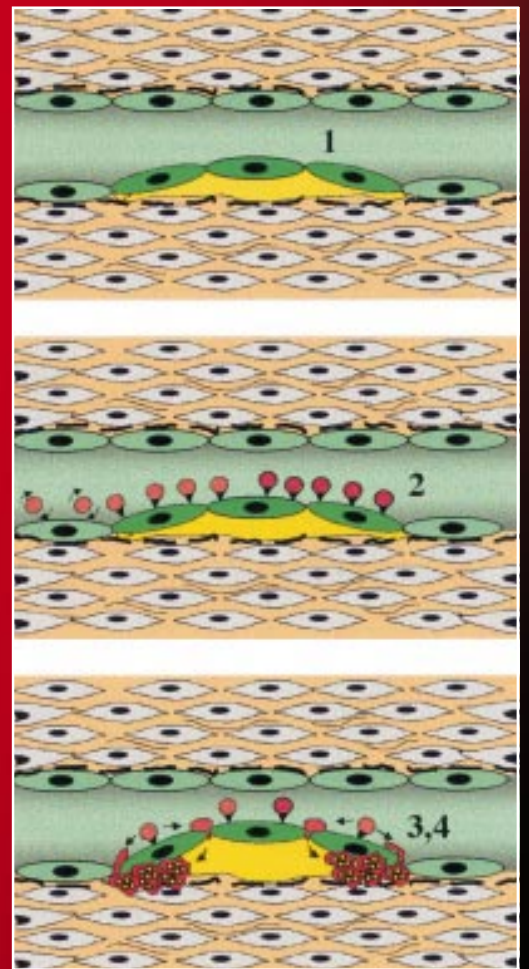
- Diabetes and CAD *p 210*

Guidelines

- Coronary angioplasty *p 224*

EDUCATION IN HEART

- Intervention in congenital heart disease II *p 237*
- Acute coronary syndromes: risk stratification *p 241*
- Causes of atheroma *p 247*



See page 247

