

# Heart

## Editorials

- Short stay angioplasty? p 491
- Cardiovascular risk and ethnicity p 493
- Assessing systolic function in practice p 495
- Intravascular radiation p 497

## Cardiovascular medicine

- Survival of patients with newly diagnosed heart failure p 505
- Exercise tolerance in the relatives of patients with dilated cardiomyopathy p 511
- Late outcome of infective endocarditis p 525

## Interventional cardiology and surgery

- Slow pathway ablation p 543
- Abrupt closure during PTCA: the effect of dipyridamole p 551
- Short term observation after PTCA p 557

## Clinical practice

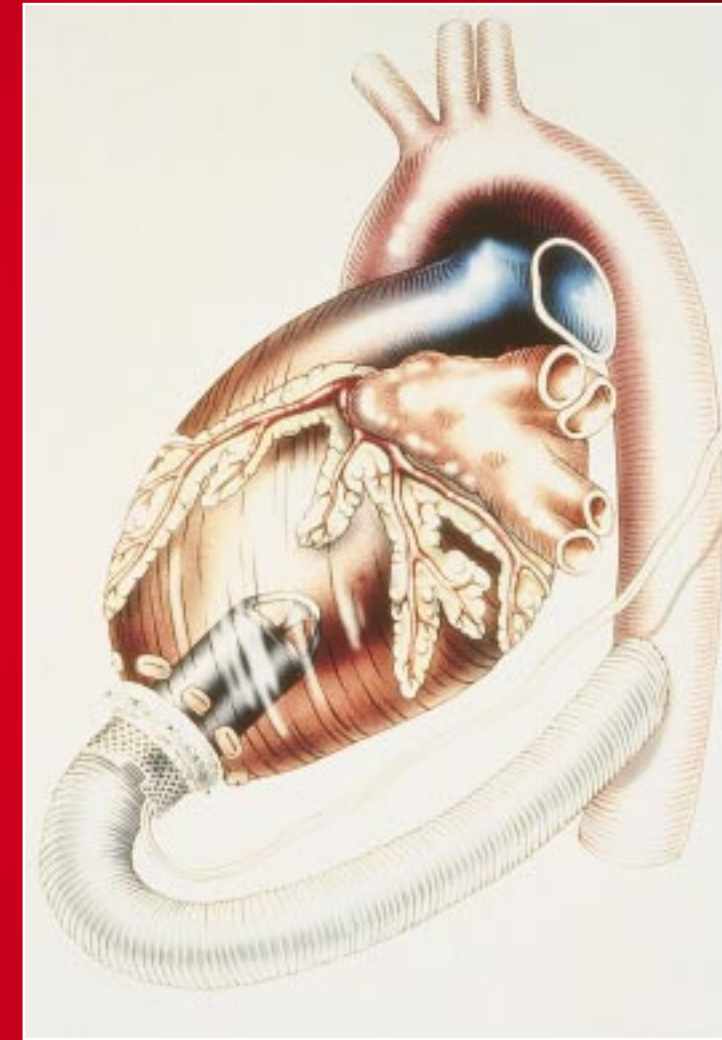
- The Newcastle protocol for tilt testing p 564

## Basic research

- Biocompatibility of PDA closure devices p 570
- ACE inhibition and Angiotensin production in the coronary circulation p 574
- IL 6 and restenosis p 578

## EDUCATION IN HEART

- ARVC: diagnosis, prognosis, and treatment p 588
- Epidemiology, aetiology, and prognosis of heart failure p 596
- Non-transplant surgery for heart failure p 603



See page 603

[www.heartjnl.com](http://www.heartjnl.com)

HEART

May 2000

83

Vol 83 No 5 Pages 491-610

