

## Editor

Roger J Hall

## Deputy Editor

David Lefroy

## Commissioning Editor

Peter Mills

## Associate Editors

Adrian P Banning, Gary F Baxter, Martin Cowie, Filippo Crea, John L Gibbs, Bernard Jung, Andreas Mügge, Iain A Simpson

## US Associate Editor

Catherine M Otto  
(Washington)

## JournalScan Editor

Iqbal S Malik

## Statistical Advisor

Ian Ford

## Managing Editor

Janet O'Flaherty

## Technical Editor

John Weller

## Editorial Assistants

Ian Betteridge  
Stephanie Watkins

## International Advisory Board

Gianni de Angelini (UK)  
Faustine Attie (Mexico)  
Philip E G Aylward (Australia)  
George A Beller (USA)  
Martin R Bennett (UK)  
Nicholas A Boon (UK)  
Roger M Boyle (UK)  
Paulo G Camici (UK)  
Terry Campbell (Australia)  
Alfred Cheng (Singapore)  
Stuart M Cobbe (UK)  
Lawrence S Cohen (USA)  
David C Crossman (UK)  
Nicolas Danchin (France)  
Henry J Dargie (UK)  
Mark A de Belder (UK)  
Pim J de Feyter (Netherlands)  
Carlo di Mario (Italy)  
Jean-Noel Fabiani (France)  
Roberto Ferrari (Italy)  
Peter J Fitzgerald (USA)  
Keith A A Fox (UK)  
D S Gambhir (India)  
Clifford J Garratt (UK)  
Marc H Gewillig (Belgium)  
Sally Greaves (New Zealand)  
Jorgen Fischer Hansen (Denmark)  
Axel Haverich (Germany)  
Otto M Hess (Switzerland)  
Gerd Heusch (Germany)  
Pierre Jaïs (France)  
Jean Kachaner (France)  
Sanjiv Kaul (USA)  
Bruce Keogh (UK)  
Robert A Kloner (USA)  
Cornelius Kluyt (Netherlands)  
Michael Komajda (France)  
S Krishnaswami (India)  
C C Lang (Malaysia)

Herve LeMarec (France)  
Janet M McComb (UK)  
Bernard Meier (Switzerland)  
R Gordon Murray (UK)  
Catherine M Otto (USA)  
Dudley J Pennell (UK)  
Shahbudin H Rahimtoolah (USA)  
John Sanderson (Hong Kong)  
Maurice E Sarano (USA)  
Pinchas Sareli (South Africa)  
James Scott (UK)  
Ajay M Shah (UK)  
Man Fai Shiu (UK)  
Jordi Soler-Soler (Spain)  
Giuseppe Specchia (Italy)  
Martin St John Sutton (USA)  
William G Stevenson (USA)  
Kenneth M Taylor (UK)  
Adam D Timmis (UK)  
James D Thomas (USA)  
Eric Topol (USA)  
Dimitris Tousoulis (Greece)  
Pavlos K Toutouzas (Greece)  
Tom Treasure (UK)  
Alec Vahanian (France)  
Cees A Visser (Netherlands)  
Ludwig K von Segesser (Switzerland)  
Carole A Warnes (USA)  
Hugh Watkins (UK)  
Gary Webb (Canada)  
Sylvan Lee Weinberg (USA)  
Harvey D White (New Zealand)  
Peter Wilde (UK)  
Neil Wilson (UK)  
Junichi Yoshikawa (Japan)  
Editor: *British Medical Journal*  
Editor Emeritus: Michael J Davies



See p 503

## Editorials

- 497 Current and future relevance of guidelines  
*W W Klein*
- 501 Some reflections on how not to get bitten by a clinical guideline  
*D Hart*
- 503 Attitudinally correct nomenclature  
*A C Cook, R H Anderson*
- 507 Myocardial dysfunction in sepsis: no role for NO?  
*E Belcher, J Mitchell, T Evans*

## Viewpoint

- 510 NICE: guessing is not guidance  
*P A Poole-Wilson*

## Cardiovascular medicine

- 513 Central neural contribution to the perception of chest pain in cardiac syndrome X  
*S D Rosen, E Paulesu, R J S Wise, P G Camici*
- 520 Troponin T concentrations 72 hours after myocardial infarction as a serological estimate of infarct size  
*M Licka, R Zimmermann, J Zehelein, T J Dengler, H A Katus, W Kübler*
- 525 Evidence for association of a common variant of the endothelial nitric oxide synthase gene (Glu<sup>298</sup>→Asp polymorphism) to the presence, extent, and severity of coronary artery disease  
*M G Colombo, M G Andreassi, U Paradossi, N Botto, S Manfredi, S Masetti, G Rossi, A Clerico, A Biagini*
- 529 Comparison of permanent left ventricular and biventricular pacing in patients with heart failure and chronic atrial fibrillation: prospective haemodynamic study  
*S Garrigue, P Bordachar, S Reuter, P Jaïs, A Kobeissi, G Gaggini, M Haissaguerre, J Clementy*
- 535 Meta-analysis of randomised controlled trials of the effectiveness of antiarrhythmic agents at promoting sinus rhythm in patients with atrial fibrillation  
*G Nichol, F McAlister, B Pham, A Laupacis, B Shea, M Green, A Tang, G Wells*

## Interventional cardiology and surgery

- 544 Isolated left main coronary artery stenosis: long term follow up in 106 patients after surgery  
*F Revault d'Allonnes, H Corbineau, H Le Breton, C Leclercq, A Leguerrier, C Daubert*
- 549 Prognostic implication of cardiac troponin T increase following stent implantation  
*J Herrmann, C von Birgelen, M Haude, L Volbracht, N Malyar, H Eggebrecht, T F M Konorza, D Baumgart, R Erbel*

## Congenital heart disease

- 554 Flow during exercise in the total cavopulmonary connection measured by magnetic resonance velocity mapping  
*E M Pedersen, E V Stenbøg, T Fründ, K Houliand, O Kromann, K E Sørensen, K Emmertsen, V E Hjortdal*

## Instructions to authors

Full instructions are available online at [www.heartjnl.com/misc/ffora.shtml](http://www.heartjnl.com/misc/ffora.shtml)  
If you do not have web access please contact the editorial office:  
Heart  
9 Fitzroy Square  
London W1T 5HW, UK  
Telephone +44 (0) 20 7383 4006  
Fax +44 (0) 20 7388 0323  
Email [heartjournal@bmjgroup.com](mailto:heartjournal@bmjgroup.com)

## Subscription information

See page ii

## Copyright

© 2002 Heart. All rights reserved; no part of this publication may be reproduced, stored in a retrieval system, or transmitted in any form or by any means, electronic, mechanical, photocopying, recording, or otherwise without the prior permission of Heart

Authors are required to grant Heart an exclusive licence to publish; further details available online at [www.heartjnl.com/misc/ffora.shtml](http://www.heartjnl.com/misc/ffora.shtml)

- Heart is published by BMJ Publishing Group and printed in UK on acid free paper by Stephens and George Magazines Limited, Merthyr Tydfil
- Periodicals postage paid, Rahway, NJ. Postmaster: send address changes to: Heart, c/o Mercury Airfreight International Ltd, 365 Blair Road, Avenel, NJ 07001, USA



[www.publicationethics.org.uk](http://www.publicationethics.org.uk)

This journal is a member of and subscribes to the principles of the Committee on Publication Ethics

- 559 Non-invasive measurement of coronary flow reserve in children with Kawasaki disease *N Noto, K Karasawa, H Kanamaru, M Ayusawa, N Sumitomo, T Okada, K Harada*

## Scientific letters

- 566 Dual chamber pacing in patients with severe heart failure on  $\beta$  blocker and amiodarone treatment: preliminary results of a randomised study *H Nägele, R Schomburg, B Petersen, W Rödiger*
- 568 Familial Mediterranean fever gene (MEFV) mutations in patients with rheumatic heart disease *E Tutar, N Akar, S Atalay, E Yılmaz, E Akar, F Yalçinkaya*

## Education in Heart

- 570 To whom do the research findings apply? *C D Furberg*
- 575 Novel mapping techniques for cardiac electrophysiology *P A Friedman*
- 583 Choice of heart valve prosthesis *P Bloomfield*

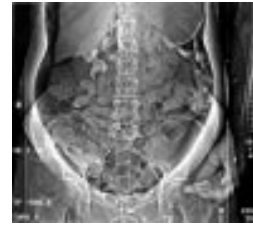
## JournalScan

- 590 Cardiovascular highlights from non-cardiology journals

## Electronic pages

- e6 Beneficial effects of biventricular pacing in a patient with hypertrophic cardiomyopathy and intraventricular conduction delay *C A Rinaldi, C A Bucknall, J S Gill*

- e7 Diagnosis of amyloidosis by histological examination of subcutaneous fat sampled at the time of pacemaker implantation *G M Gribbin, J A Gilbertson, P N Hawkins*
- e8 Mitral valve endocarditis in hypertrophic cardiomyopathy: case report and literature review *G Morgan-Hughes, J Motwani*



See p 558

## Miscellanea

- 509 Stamps in cardiology: History of cardiac surgery *M K Davies A Hollman*
- 543 Images in cardiology: Intermittent Brugada syndrome misdiagnosed as acute myocardial infarction and unmasked with propafenone *I Akdemir, V Davutoglu, M Aksoy*
- 553 Images in cardiology: Cardiac involvement in idiopathic hypereosinophilic syndrome *R Lorenzoni, L Cortigiani, A Melosi*
- 558 Images in cardiology: Gastric perforation complicating direct current cardioversion *S Velez-Roa, M A Bali, M Renard*
- 565 Images in cardiology: Biventricular hypertrophic cardiomyopathy with lone obstruction to right ventricular outflow *F Chirillo, R Zecchel, P Stritoni*
- 567 Images in cardiology: Histological gap between ablation lesions detected by phased array intracardiac echocardiography *M Takagi, K Takeuchi, J Yoshikawa*
- 567 Images in cardiology: Post-infarction ventricular septal defect with aneurysm *F R Quinn, A J Brady*
- 569 Images in cardiology: Left ventricular pseudoaneurysm: a mechanical complication of acute myocardial infarction *I Müller, P Andrassy, C Firschke*
- 592 Electronic pages
- 592 Web Top 10

## Online index

A pdf (printer friendly) version of the index for volume 87 of *Heart* will be posted on the journal's web site ([www.heartjnl.com](http://www.heartjnl.com)) in conjunction with the July issue (Vol 88, Issue 1). This pdf will be freely available to all.