

# Heart

[www.heartjnl.com](http://www.heartjnl.com)

**Editorials**

- Adrenergic innervation of the heart *p 209, 255*
- PCI in diabetes *p 213, 260*

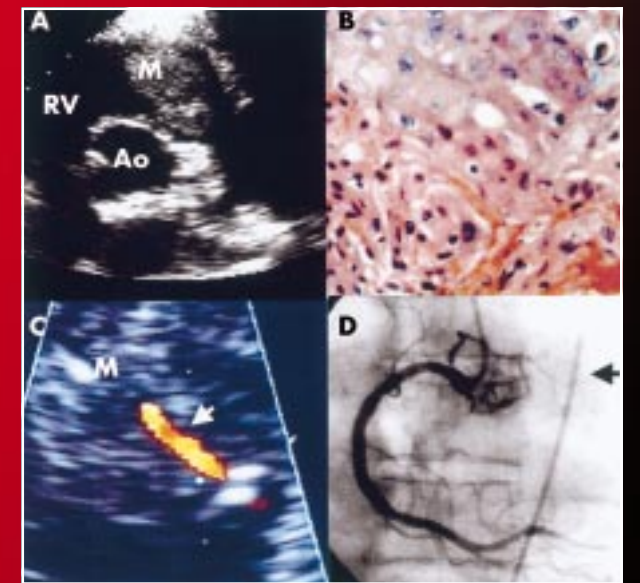
**Cardiovascular medicine**

- Adherence to statin therapy post-MI *p 229*
- Atorvastatin in type III and combined dyslipidaemia *p 234*
- Clinical characteristics of HF with or without reduced EF *p 249*

**EDUCATION IN HEART**

- Reperfusion after acute MI *p 298*
- Risk assessment in hypertension management *p 306*
- Off-pump CABG *p 314*

See inside for full list of contents



See page 216

