

## Editor

Roger J Hall

## Deputy Editor

David Lefroy

## Commissioning Editor

Peter Mills

## Associate Editors

Adrian P Banning, Gary F Baxter, Martin Cowie, Filippo Crea, John L Gibbs, Bernard Jung, Andreas Mügge, Iain A Simpson

## US Associate Editor

Catherine M Otto  
(Washington)

## JournalScan Editor

Iqbal S Malik

## Statistical Advisor

Ian Ford

## Managing Editor

Janet O'Flaherty

## Technical Editor

John Weller

## Editorial Assistants

Ian Betteridge  
Stephanie Watkins

## International Advisory Board

Gianni de Angelini (UK)  
Faustine Attie (Mexico)  
Philip E G Aylward (Australia)  
George A Beller (USA)  
Martin R Bennett (UK)  
Nicholas A Boon (UK)  
Roger M Boyle (UK)  
Paulo G Camici (UK)  
Terry Campbell (Australia)  
Alfred Cheng (Singapore)  
Stuart M Cobbe (UK)  
Lawrence S Cohen (USA)  
David C Crossman (UK)  
Nicolas Danchin (France)  
Henry J Dargie (UK)  
Mark A de Belder (UK)  
Pim J de Feyter (Netherlands)  
Carlo di Mario (Italy)  
Jean-Noel Fabiani (France)  
Roberto Ferrari (Italy)  
Peter J Fitzgerald (USA)  
Keith A A Fox (UK)  
D S Gambhir (India)  
Clifford J Garratt (UK)  
Marc H Gewillig (Belgium)  
Sally Greaves (New Zealand)  
Jorgen Fischer Hansen (Denmark)  
Axel Haverich (Germany)  
Otto M Hess (Switzerland)  
Gerd Heusch (Germany)  
Pierre Jais (France)  
Jean Kachaner (France)  
Sanjiv Kaul (USA)  
Bruce Keogh (UK)  
Robert A Kloner (USA)  
Cornelius Kluyt (Netherlands)  
Michael Komajda (France)  
S Krishnaswami (India)  
C C Lang (Malaysia)

Herve LeMarec (France)  
Janet M McComb (UK)  
Bernard Meier (Switzerland)  
R Gordon Murray (UK)  
Catherine M Otto (USA)  
Dudley J Pennell (UK)  
Shahbudin H Rahimtoolah (USA)  
John Sanderson (Hong Kong)  
Maurice E Sarano (USA)  
Pinchas Sareli (South Africa)  
James Scott (UK)  
Ajay M Shah (UK)  
Man Fai Shiu (UK)  
Jordi Soler-Soler (Spain)  
Giuseppe Specchia (Italy)  
Martin St John Sutton (USA)  
William G Stevenson (USA)  
Kenneth M Taylor (UK)  
Adam D Timmis (UK)  
James D Thomas (USA)  
Eric Topol (USA)  
Dimitris Tousoulis (Greece)  
Pavlos K Toutouzas (Greece)  
Tom Treasure (UK)  
Alec Vahanian (France)  
Cees A Visser (Netherlands)  
Ludwig K von Segesser (Switzerland)  
Carole A Warnes (USA)  
Hugh Watkins (UK)  
Gary Webb (Canada)  
Sylvan Lee Weinberg (USA)  
Harvey D White (New Zealand)  
Peter Wilde (UK)  
Neil Wilson (UK)  
Junichi Yoshikawa (Japan)  
Editor: *British Medical Journal*  
Editor Emeritus: Michael J Davies

## Instructions to authors

Full instructions are available online at [www.heartjnl.com/misc/ifora.shtml](http://www.heartjnl.com/misc/ifora.shtml)

If you do not have web access please contact the editorial office:  
Heart

9 Fitzroy Square  
London W1T 5HW, UK  
Telephone +44 (0) 20 7383 4006  
Fax +44 (0) 20 7388 0323  
Email [heartjournal@bmjgroup.com](mailto:heartjournal@bmjgroup.com)

## Subscription information

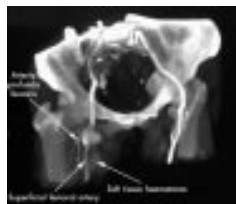
See page ii

## Copyright

© 2002 Heart. All rights reserved; no part of this publication may be reproduced, stored in a retrieval system, or transmitted in any form or by any means, electronic, mechanical, photocopying, recording, or otherwise without the prior permission of Heart

Authors are required to grant Heart an exclusive licence to publish; further details available online at [www.heartjnl.com/misc/ifora.shtml](http://www.heartjnl.com/misc/ifora.shtml)

- Heart is published by BMJ Publishing Group and printed in UK on acid free paper by Stephens and George Magazines Limited, Merthyr Tydfil
- Periodicals postage paid, Rahway, NJ. Postmaster: send address changes to: Heart, c/o Mercury Airfreight International Ltd, 365 Blair Road, Avenel, NJ 07001, USA



See p 215



[www.publicationethics.org.uk](http://www.publicationethics.org.uk)

This journal is a member of and subscribes to the principles of the Committee on Publication Ethics

## Editorials

- 209 Imaging of cardiac adrenergic innervation  
*P G Camici*
- 211 Automated cardiac flow measurement by digital colour Doppler echocardiography  
*T Shiota*
- 213 Percutaneous coronary intervention in diabetics: time to consider "intimal remodelling therapy"? *P F Ludman*

## Cardiovascular medicine

- 217 New insights into the mechanism of neurally mediated syncope *M A Mercader, P J Varghese, S J Potolicchio, G K Venkatraman, S W Lee*
- 222 Prediction of mortality from coronary heart disease among diverse populations: is there a common predictive function? *Diverse Populations Collaborative Group*
- 229 Adherence to statin treatment and readmission of patients after myocardial infarction: a six year follow up study *L Wei, J Wang, P Thompson, S Wong, A D Struthers, T M MacDonald*
- 234 Long term efficacy and safety of atorvastatin in the treatment of severe type III and combined dyslipidaemia *M van Dam, M Zwart, F de Beer, A H M Smelt, M H Prins, M D Trip, L M Havekes, P J Lansberg, J J P Kastelein*
- 239 Ventilatory variables are strong prognostic markers in elderly patients with heart failure *M Mejhert, E Linder-Klingsell, M Edner, T Kahan, H Persson*
- 244 Assessment of right ventricular function with Doppler echocardiographic indices derived from tricuspid annular motion: comparison with radionuclide angiography *O M Ueti, E E Camargo, A de A Ueti, E C de Lima-Filho, E A Nogueira*
- 249 Clinical characteristics and prognosis of hospitalised inpatients with heart failure and preserved or reduced left ventricular ejection fraction *A Varela-Roman, J R Gonzalez-Juanatey, P Basante, R Trillo, J Garcia-Seara, J L Martinez-Sande, F Gude*
- 255 Assessment of myocardial adrenergic innervation in patients with sick sinus syndrome: effect of asynchronous ventricular activation from ventricular apical stimulation *M E Marketou, E N Simantirakis, V K Prassopoulos, S I Chrysostomakis, A A Velidaki, N S Karkavitsas, P E Vardas*

## Interventional cardiology and surgery

- 260 Clinical outcomes of patients with diabetes mellitus and acute myocardial infarction treated with primary angioplasty or fibrinolysis *L F Hsu, K H Mak, K W Lau, L L Sim, C Chan, T H Koh, S C Chuah, R Kam, Z P Ding, W S Teo, Y L Lim*

## Congenital heart disease

- 266 ECG determinants in adult patients with chronic right ventricular pressure overload caused by congenital heart disease: relation with plasma neurohormones and MRI parameters  
*J G J Neffke, I I Tulevski, E E van der Wall, A A M Wilde, D J van Veldhuisen, A Dodge-Khatami, B J M Mulder*
- 271 Influence of twin-twin transfusion syndrome on fetal cardiovascular structure and function: prospective case-control study of 136 monozygotic twin pregnancies  
*A A Karatza, J L Wolfenden, M J O Taylor, L Wee, N M Fisk, H M Gardiner*
- 278 Non-invasive automated assessment of the ratio of pulmonary to systemic flow in patients with atrial septal defects by the colour Doppler velocity profile integration method  
*Y Ueda, T Hozumi, K Yoshida, H Watanabe, T Akasaka, T Takagi, A Yamamuro, S Homma, J Yoshikawa*

## Basic research

- 283 New applications of intracardiac echocardiography: assessment of coronary blood flow by colour and pulsed Doppler imaging in dogs  
*M Teragaki, I Toda, M Takagi, S Fukuda, K Ujino, K Takeuchi, J Yoshikawa*
- 289 A rapid and reproducible on line automated technique to determine endothelial function  
*J S Sidhu, V R Newey, D K Nassiri, J C Kaski*

## Scientific letters

- 293 Does adenosine prevent myocardial micronecrosis following percutaneous coronary intervention? The ADELIN pilot trial  
*W J R Desmet, J Dens, P Coussement, F Van de Werf*
- 296 Increased circulating interleukin-18 in patients with congestive heart failure  
*Y Naito, T Tsujino, Y Fujioka, M Ohyanagi, H Okamura, T Iwasaki*

## Education in Heart

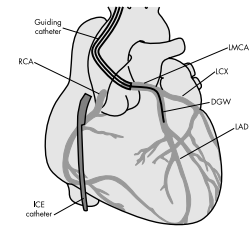
- 298 Acute myocardial infarction: reperfusion treatment  
*F Ribichini, W Wijns*
- 306 Cardiovascular and coronary risk estimation in hypertension management  
*E J Wallis, L E Ramsay, P R Jackson*
- 313 Off-pump coronary artery bypass surgery  
*P P Th de Jaegere, W J L Suyker*

## JournalScan

- 319 Cardiovascular highlights from non-cardiology journals

## Miscellanea

- 215 Images in cardiology: Difficult haemostasis following diagnostic transfemoral angiogram caused by inadvertent puncture of the arteria profunda femoris  
*S Kumar, R W Bury, D H Roberts*
- 215 Stamps in cardiology: Atropa belladonna  
*M K Davies, A Hollman*
- 216 Images in cardiology: Tumour feeding vessel in metastatic intracardiac mass demonstrated by transthoracic Doppler echocardiography  
*H-J Youn, W-S Chung, S-J Hong*
- 216 Images in cardiology: Papillary fibroelastoma as a cause of cardioembolic stroke  
*H Burri, C Vuille, J Sierra*
- 233 Images in cardiology: Magnetic resonance imaging of left atrial thrombus  
*H Ohyama, K Mizushige, N Hosomi*
- 243 Images in cardiology: Giant congenital aneurysm of the non-coronary sinus of Valsalva  
*M Ritter, E Oechslin, R Jenni*
- 265 Images in cardiology: Separation of coronary ostium caused by pseudoaneurysm formation after composite valve graft replacement for acute dissection of the ascending aorta  
*T C Konings, P A van der Wouw, K Bloemendaal*
- 277 Images in cardiology: Displacement of the heart caused by pulmonary agenesis  
*T R D Shaw*
- 288 Images in cardiology: Non-paroxysmal junctional tachycardia with type I exit block  
*S S Barold, D L Hayes*
- 292 Images in cardiology: Pulmonary arteriovenous malformation and aortopulmonary collateral imaged by time resolved contrast enhanced magnetic resonance angiography  
*C Fink, J Eichhorn, M Bock*
- 295 Images in cardiology: Supernormal conduction mimicking a supraventricular capture beat during wide complex tachycardia  
*F Niroomand*
- 320 Web Top 10



See p 283