

Editor

Roger J Hall

Commissioning Editor

Iain Simpson

Associate Editors

Adrian P Banning, Gary F Baxter, Martin Cowie, Filippo Crea,
John L Gibbs, Bernard Jung, Andreas Mügge

US Associate Editor

Catherine M Otto
(Washington)

JournalScan Editor

Iqbal S Malik

Statistical Advisor

Ian Ford

Deputy Editor

David Lefroy

Series Editor, Education in Heart

Peter Mills

Managing Editor

Janet O'Flaherty

Technical Editor

John Weller

Editorial Assistants

Ian Betteridge
Stephanie Watkins

International Advisory Board

Gianni de Angelini (UK)
Fause Attie (Mexico)
Philip E G Aylward (Australia)
George A Beller (USA)
Martin R Bennett (UK)
Nicholas A Boon (UK)
Roger M Boyle (UK)
Paulo G Camici (UK)
Terry Campbell (Australia)
Alfred Cheng (Singapore)
Stuart M Cobbe (UK)
Lawrence S Cohen (USA)
David C Crossman (UK)
Nicolas Danchin (France)
Henry J Dargie (UK)
Mark A de Belder (UK)
Pim J de Feyter (Netherlands)
Carlo di Mario (Italy)
Jean-Noel Fabiani (France)
Roberto Ferrari (Italy)
Peter J Fitzgerald (USA)
Keith A A Fox (UK)
D S Gambhir (India)
Clifford J Garratt (UK)
Marc H Gewillig (Belgium)
Sally Greaves (New Zealand)
Jorgen Fischer Hansen
(Denmark)
Axel Haverich (Germany)
Otto M Hess (Switzerland)
Gerd Heusch (Germany)
Pierre Jaïs (France)
Jean Kachaner (France)
Sanjiv Kaul (USA)
Bruce Keogh (UK)
Robert A Kloner (USA)
Cornelius Klufft (Netherlands)
Michael Komajda (France)
S Krishnaswami (India)

C C Lang (Malaysia)
Herve LeMarec (France)
Janet M McComb (UK)
Bernard Meier (Switzerland)
R Gordon Murray (UK)
Catherine M Otto (USA)
Dudley J Pennell (UK)
Shabbudin H Rahimtoolah
(USA)
John Sanderson (Hong Kong)
Maurice E Sarano (USA)
Pinchas Sareli (South Africa)
James Scott (UK)
Ajay M Shah (UK)
Man Fai Shiu (UK)
Jordi Soler-Soler (Spain)
Giuseppe Specchia (Italy)
Martin St John Sutton (USA)
William G Stevenson (USA)
Kenneth M Taylor (UK)
Adam D Timmis (UK)
James D Thomas (USA)
Eric Topol (USA)
Dimitris Tousoulis (Greece)
Pavlos K Toutouzas (Greece)
Alec Vahanian (France)
Cees A Visser (Netherlands)
Ludwig K von Segesser
(Switzerland)
Carole A Warnes (USA)
Hugh Watkins (UK)
Gary Webb (Canada)
Sylvan Lee Weinberg (USA)
Harvey D White (New
Zealand)
Peter Wilde (UK)
Neil Wilson (UK)
Junichi Yoshikawa (Japan)
Editor: *British Medical
Journal*
Editor Emeritus: Michael J
Davies

Instructions to authors

Full instructions are available online at [www.heartjnl.com/
misc/ifora.shtml](http://www.heartjnl.com/misc/ifora.shtml)

If you do not have web access please contact the editorial office:
Heart

9 Fitzroy Square
London W1T 5HW, UK
Telephone +44 (0) 20 7383 4006
Fax +44 (0) 20 7388 0323
Email heartjournal@bmjgroup.com

Subscription information

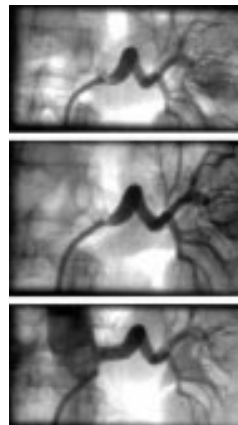
See page ii

Copyright

© 2002 *Heart*. All rights reserved; no part of this publication
may be reproduced, stored in a retrieval system, or transmitted
in any form or by any means, electronic, mechanical,
photocopying, recording, or otherwise without the prior
permission of *Heart*

Authors are required to grant *Heart* an exclusive licence to
publish; further details available online at [www.heartjnl.com/
misc/ifora.shtml](http://www.heartjnl.com/misc/ifora.shtml)

- *Heart* is published by BMJ Publishing Group and printed in
UK on acid free paper by Stephens and George Magazines
Limited, Merthyr Tydfil
- Periodicals postage paid, Rahway, NJ. Postmaster: send
address changes to: *Heart*, c/o Mercury Airfreight
International Ltd, 365 Blair Road, Avenel, NJ 07001, USA



See p 558



www.publicationethics.org.uk

This journal is a member of and
subscribes to the principles of the
Committee on Publication Ethics

Editorials

- 553 What's bad for the gander . . . Women and
sudden cardiac death *W J Groh,
E von der Lohe, D P Zipes*
- 555 Relation between blood pressure after an acute
coronary event and subsequent cardiovascular
risk *C-K Wong, H D White*
- 559 Measuring left ventricular volume and ejection
fraction with the biplane Simpson's method
J E Otterstad
- 561 Pathogenesis of pulmonary arteriovenous
malformations: role of hepatopulmonary
interactions *J J Vettukattil*

Viewpoint

- 564 Nitric oxide and myocardial function in heart
failure: friend or foe? *J M Cotton, M T Kearney,
A M Shah*

Cardiovascular Research Funders Forum

- 567 Heart failure: aetiology, diagnosis, and
treatment *C George*

Review

- 570 Transfer for primary angioplasty: who and how?
M Dalby, G Montalescot

Cardiovascular medicine

- 573 Impact of age and sex on sudden
cardiovascular death following myocardial
infarction *S Z Abildstrom, C Rask-Madsen,
M M Ottesen, P K Andersen, S Rosthøj,
C Torp-Pedersen, L Køber, on behalf of the
TRACE Study Group*
- 579 Characteristics and outcome among patients
having out of hospital cardiac arrest at home
compared with elsewhere *J Herlitz, M Eek,
M Holmberg, J Engdahl, S Holmberg*
- 583 Interaction between arrival time and
thrombolytic treatment in determining early
outcome of acute myocardial infarction
*J Wilkinson, K Foo, N Sekhri, J Cooper,
A Suliman, K Ranjadayalan, A D Timmis*
- 587 Hypertension control at hospital discharge after
acute coronary event: influence on
cardiovascular prognosis—the PREVENIR study
*J Amar, B Chamontin, J Ferrières, N Danchin,
O Grenier, C Cantet, J-P Cambou*
- 592 Early prediction of improvement in ejection
fraction after acute myocardial infarction using
low dose dobutamine echocardiography
*F Nijland, O Kamp, P M J Verhorst,
W G de Voogt, C A Visser*
- 597 The economic burden of coronary heart disease
in the UK *J L Y Liu, N Maniadakis, A Gray,
M Rayner*
- 604 Antiarrhythmic and anti-ischaemic effects of
angina in patients with and without coronary
collaterals *R J Edwards, S R Redwood,
P D Lambiase, E Tomset, R D Rakhit, M S Marber*
- 611 β Blockers in older persons with heart failure:
tolerability and impact on quality of life
*A J Baxter, A Spensley, A Hildreth,
G Karimova, J E O'Connell, C S Gray*

- 615 Widespread cardiovascular autonomic dysfunction in primary amyloidosis: does spontaneous hyperventilation have a compensatory role against postural hypotension? *L Bernardi, C Passino, C Porta, E Anesi, G Palladini, G Merlini*

Interventional cardiology and surgery

- 622 Clinical and angiographic outcome after conventional angioplasty with optional stent implantation compared with direct stenting without predilatation *S Miketic, J Carlsson, U Tebbe*
- 627 Population need for coronary revascularisation: are national targets for England credible? *R M Martin, H Hemingway, D Gunnell, K R Karsch, A Baumbach, S Frankel*

Congenital heart disease

- 634 Sinus venosus syndrome: atrial septal defect or anomalous venous connection? A multiplane transoesophageal approach *J M Oliver, P Gallego, A Gonzalez, F J Dominguez, A Aroca, J M Mesa*

Scientific letters

- 639 The mechanism of formation of pulmonary arteriovenous malformations associated with the classic Glenn shunt (superior cavopulmonary anastomosis) *H Ashrafian, L Swan*
- 640 Variable seasonal peaks for different types of aortic dissection? *R Kobza, M Ritter, B Seifert, R Jenni*
- 641 Relations between alcohol consumption, heart rate, and heart rate variability in men *J M Ryan, L G Howes*
- 643 Why do UK cardiac surgeons not perform their first choice operation for coronary artery bypass graft? *P A Catarino, E Black, D P Taggart*
- 645 Long term follow up after deferral of revascularisation in patients with intermediate coronary stenoses and negative dobutamine stress echocardiography *T Giesler, S Lamprecht, J-U Voigt, D Ropers, K Pohle, J Ludwig, F A Flachskampf, W G Daniel, U Nixdorff*
- 647 Serum cardiac troponin T and plasma brain natriuretic peptide in patients with cardiac decompensation *Y Sato, R Taniguchi, T Makiyama, K Nagai, H Okada, T Yamada, A Matsumori, Y Takatsu*
- 649 Association between aldosterone synthase (CYP11B2) gene polymorphism and left ventricular volume in patients with dilated cardiomyopathy *E Takai, H Akita, K Kanazawa, N Shiga, M Terashima, Y Matsuda, C Iwai, Y Miyamoto, H Kawai, A Takarada, M Yokoyama*

Education in Heart

- 651 Doppler echocardiographic assessment of valvar regurgitation *J D Thomas*
- 658 Pulmonary hypertension in the young *S G Haworth*
- 665 Myotonic dystrophy and the heart *G Pelargonio, A Dello Russo, T Sanna, G De Martino, F Bellocchi*

JournalScan

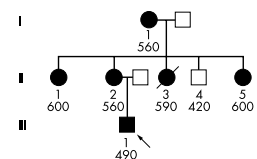
- 671 Cardiovascular highlights from non-cardiology journals

Electronic pages

- e7 Author index
- e8 Subject index

Miscellanea

- 558 Images in cardiology: Resolution of renal artery thrombus with direct administration of tissue plasminogen activator *K P Balachandran, A C H Pell, K G Oldroyd*
- 560 Images in cardiology: An unusual cause of mixed mitral valve disease *K S Nair, D R Lawrence, P L C Smith*
- 578 Images in cardiology: Near-fatal arrhythmia caused by hyperkalaemia *R B Walter, E B Bachli*
- 591 Images in cardiology: Imaging in aortoarteritis *K M Krishnamoorthy, A Patle*
- 614 Images in cardiology: Coronary occlusion caused by embolisation from a mass in the sinus of Valsalva *P Elsmann, A van 't Hof, M J de Boer*
- 621 Images in cardiology: Regression of HTLV1 associated intracardiac lymphoma following chemotherapy *A Hamaad, R C Davis, D L Connolly*
- 626 Images in cardiology: Atrio-auricular mechanical dissociation following electrical cardioversion for atrial fibrillation *S Carerj, M P Calabrò, S Di Rosa*
- 633 Images in cardiology: Postextrasystolic "T wave hump" augmentation as a marker of increased arrhythmogenic risk in the long QT syndrome *H Wedekind, E Schulze-Bahr, H Djonlagic*
- 633 Images in cardiology: An unusual image within the left atrium with UFO-like appearance on transoesophageal echocardiography *N Özdemir, C Kaymaz, M Özkan*
- 638 Images in cardiology: Pronounced PR depression *C Lee, W Czarnecki*
- 642 Web Top 10
- 644 From BMJ Journals: What is the best treatment for Kawasaki disease?
- 648 Images in cardiology: Successful use of the Guardwire Plus distal embolisation protection device in a native left anterior descending coronary artery *S N Doshi, J D Marmur, M Kamran*



See p 633