

Editor

Roger J Hall

Commissioning Editor

Iain Simpson

Associate Editors

Adrian P Banning, Alain Berrebi, Eric Butchart, Filippo Crea, David Crossman, John L Gibbs, Bernard Lung, Andreas Mügge

US Associate Editor

Catherine M Otto
(Washington)

JournalScan Editor

Iqbal S Malik

Statistical Advisor

Ian Ford

Deputy Editor

David Lefroy

Series Editor, Education in Heart

Peter Mills

Managing Editor

Janet O'Flaherty

Technical Editor

John Weller

Editorial Assistants

Andy Fosberry
Stephanie Watkins

International Advisory Board

Gianni de Angelini (UK)
Fause Attie (Mexico)
Philip E G Aylward (Australia)
Gary Baxter (UK)
George A Beller (USA)
Martin R Bennett (UK)
Nicholas A Boon (UK)
Roger M Boyle (UK)
Paulo G Camici (UK)
Terry Campbell (Australia)
Alfred Cheng (Singapore)
Stuart M Cobbe (UK)
Lawrence S Cohen (USA)
Martin Cowie (UK)
Nicolas Danchin (France)
Henry J Dargie (UK)
Mark A de Belder (UK)
Pim J de Feyter (Netherlands)
Carlo di Mario (Italy)
Jean-Noel Fabiani (France)
Roberto Ferrari (Italy)
Peter J Fitzgerald (USA)
Keith A A Fox (UK)
D S Gambhir (India)
Clifford J Garratt (UK)
Marc H Gewillig (Belgium)
Sally Greaves (New Zealand)
Jorgen Fischer Hansen (Denmark)
Axel Haverich (Germany)
Otto M Hess (Switzerland)
Gerd Heusch (Germany)
Pierre Jaïs (France)
Jean Kachaner (France)
Sanjiv Kaul (USA)
Bruce Keogh (UK)
Robert A Kloner (USA)
Cornelius Klufft (Netherlands)

Michael Komajda (France)
S Krishnaswami (India)
C C Lang (Malaysia)
Herve LeMarec (France)
Janet M McComb (UK)
Bernard Meier (Switzerland)
R Gordon Murray (UK)
Catherine M Otto (USA)
Dudley J Pennell (UK)
Shahbudin H Rahimtoolah (USA)
John Sanderson (Hong Kong)
Maurice E Sarano (USA)
Pinchas Sareli (South Africa)
James Scott (UK)
Ajay M Shah (UK)
Man Fai Shiu (UK)
Jordi Soler-Soler (Spain)
Giuseppe Specchia (Italy)
Martin St John Sutton (USA)
William G Stevenson (USA)
Kenneth M Taylor (UK)
Adam D Timmis (UK)
James D Thomas (USA)
Eric Topol (USA)
Dimitris Tousoulis (Greece)
Pavlos K Toutouzas (Greece)
Alec Vahanian (France)
Cees A Visser (Netherlands)
Ludwig K von Segesser (Switzerland)
Carole A Warnes (USA)
Hugh Watkins (UK)
Gary Webb (Canada)
Sylvan Lee Weinberg (USA)
Harvey D White (New Zealand)
Neil Wilson (UK)
Junichi Yoshikawa (Japan)
Editor: *British Medical Journal*

Instructions to authors

Full instructions are available online at www.heartjnl.com/misc/ifora.shtml

If you do not have web access please contact the editorial office:

Heart

9 Fitzroy Square

London W1T 5HW, UK

Telephone +44 (0) 20 7383 4006

Fax +44 (0) 20 7388 0323

Email heartjournal@bmjgroup.com

Subscription information

See page ii

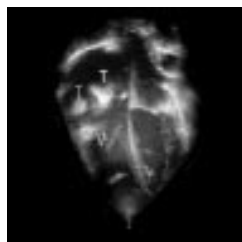
Copyright

© 2003 BMJ Publishing Group and British Cardiac Society. All rights reserved; no part of this publication may be reproduced, stored in a retrieval system, or transmitted in any form or by any means, electronic, mechanical, photocopying, recording, or otherwise without prior permission

Authors are required to grant *Heart* an exclusive licence to publish; further details available online at www.heartjnl.com/misc/ifora.shtml

• *Heart* is published by BMJ Publishing Group and printed in UK on acid free paper by Stephens and George Magazines Limited, Merthyr Tydfil

• Periodicals postage paid, Rahway, NJ. Postmaster: send address changes to: *Heart*, c/o Mercury Airfreight International Ltd, 365 Blair Road, Avenel, NJ 07001, USA



See p 501



www.publicationethics.org.uk

This journal is a member of and subscribes to the principles of the Committee on Publication Ethics

Appreciation

- 473 Professor Michael Davies, British Heart Foundation Professor of Cardiac Pathology, Editor of *Heart* 1992–1999 *P Mills, R Hall*

Editorials

- 475 Stress and myocardial infarction *J S Chi, R A Kloner*
- 477 Who would I not give IIb/IIIa inhibitors to during percutaneous coronary intervention? *J M McLenachan*
- 479 Improving the delivery of coronary care for ethnic minorities *K Khunti, N J Samani*
- 481 Which heart valve prosthesis for patients aged between 60 and 70 years? *G Hanania*

Viewpoint

- 483 Are we underestimating the full potential of early thrombolytic treatment in patients with acute myocardial infarction? *C J Terkelsen, J F Lassen, B L Nørgaard, J C Gerdes, T T Nielsen, H R Andersen*

Review

- 485 Diagnosing cardiac contusion: old wisdom and new insights *K C Sybrandy, M J M Cramer, C Burgersdijk*

Cardiovascular medicine

- 490 Associations between ST depression, four year mortality, and in-hospital revascularisation in unselected patients with non-ST elevation acute coronary syndromes *T A Hyde, J K French, C-K Wong, C Edwards, R M L Whitlock, H D White*
- 496 Abortion of acute ST segment elevation myocardial infarction after reperfusion: incidence, patients' characteristics, and prognosis *E J P Lamfers, T E H Hooghoudt, D P Hertzberger, A Schut, P W J Stolwijk, F W A Verheugt*
- 502 What level of physical activity protects against premature cardiovascular death? The Caerphilly study *S Yu, J W G Yarnell, P M Sweetnam, L Murray*
- 507 Trends in incidence and case fatality rates of acute myocardial infarction in Denmark and Sweden *S Z Abildstrom, S Rasmussen, M Rosén, M Madsen*
- 512 A single serum glucose measurement predicts adverse outcomes across the whole range of acute coronary syndromes *K Foo, J Cooper, A Deaner, C Knight, A Suliman, K Ranjadayalan, A D Timmis*
- 517 Regional myocardial perfusion defects during exercise, as assessed by three dimensional integration of morphology and function, in relation to abnormal endothelium dependent vasoreactivity of the coronary microcirculation *T H Schindler, E Nitzsche, N Magosaki, I Brink, M Mix, M Olschewski, U Solzbach, H Just*
- 527 Experience with enoxaparin in patients with mechanical heart valves who must withhold acenocumarol *I Ferreira, L Dos, P Tornos, I Nicolau, G Permanyer-Miralda, J Soler-Soler*

- 531 Effects of L-arginine on flow mediated dilatation induced by atrial pacing in diseased epicardial coronary arteries *D Tousoulis, G J Davies, C Tentolouris, T Crane, G Goumas, C Stefanadis, P Toutouzas*

Interventional cardiology and surgery

- 535 Deaths associated with platelet glycoprotein IIb/IIIa inhibitor treatment *D L Brown*
- 538 Simvastatin attenuates leucocyte-endothelial interactions after coronary revascularisation with cardiopulmonary bypass *M Chello, P Mastroroberto, G Patti, A D'Ambrosio, M Cortez Morichetti, G Di Sciascio, E Covino*

Congenital heart disease

- 544 Left atrial and left ventricular function in healthy children and young adults assessed by three dimensional echocardiography *T Poutanen, E Jokinen, H Sairanen, T Tikanoja*

Scientific letters

- 551 Improved postoperative outcomes with stentless aortic valve: a community hospital experience *S A Olenchock, Jr, J F Reed III, A Brown, F M Garzia*
- 553 Warfarin for non-valvar atrial fibrillation: still underused in the 21st century? *S Bo, G Ciccone, L Scaglione, C Taliano, M Piobbici, F Merletti, G Pagano*
- 555 Lower myocardial infarction mortality in French men the day France won the 1998 World Cup of football *F Berthier, F Boulay*
- 557 DD ACE gene polymorphism is associated with increased coronary artery endothelial dysfunction: the PREFACE trial *H J G H Mulder, P P van Geel, M J Schaliij, W H van Gilst, A H Zwinderman, A V G Brusckhe*
- 559 Prospective evaluation of the role of routine cardiac troponin T measurement to identify left ventricular ejection fraction < 40% after first myocardial infarction *A C R Rao, P O Collinson, A J Rose, C John, R Canepa-Anson, S P Joseph*
- 561 Implementation of a diagnostic and interventional transradial programme: resource and organisational implications *S C Eccleshall, M Banks, R Carroll, R Jaumdally, D Fraser, J Nolan*
- 563 GREAT: 10 year survival of patients with suspected acute myocardial infarction in a randomised comparison of prehospital and hospital thrombolysis *J Rawles*

Education in Heart

- 565 Indications for percutaneous and surgical revascularisation: how far does the evidence base guide us? *P M Schofield*

- 571 Ambulatory blood pressure monitoring in the management of hypertension *E O'Brien*
- 577 Injection drug use and right sided endocarditis *R Moss, B Munt*

JournalScan

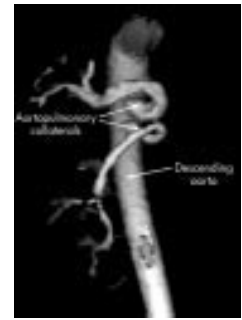
- 582 Cardiovascular highlights from non-cardiology journals

Electronic pages

- e15 Williams syndrome associated with complete atrioventricular septal defect *S Nakamoto, T Saga, T Shinohara*
- e16 Innocent victim of a localised outbreak: legionella endocarditis *R Massey, P Kumar, J R Pepper*
- e17 Trash feet after coronary angiography *A M Khan, S Jacobs*

Miscellanea

- 474 Images in cardiology: An unusual tattoo *M O'Neil, S W Dubrey, R Grocott-Mason*
- 474 Images in cardiology: Low output, low gradient aortic stenosis *P MacCarthy, A Berger, B de Bruyne*
- 480 Images in cardiology: Pulmonary valve endocarditis *S Dhakam, F Jafari*
- 489 Electronic pages
- 495 Images in cardiology: Acquired coronary artery fistula leading to acute myocardial infarction after endomyocardial biopsy *C H Lee, P A Lemos, P W Serruys*
- 501 Images in cardiology: Surgical resection of multiple right atrial masses in a child with β thalassaemia and receiving desferioxamine *M West, G A Malik, J C S Pollock*
- 511 Images in cardiology: Catheter induced spasm: a trap for the unwary *D Perera, S J Patel, S R Redwood*
- 549 Images in cardiology: Persistent truncus arteriosus with absence of right pulmonary artery *M N L Wong, R Kirk, S C Quek*
- 550 Electronic pages: The Coronary Artery Revascularisation in Diabetes (CARDia) trial *A Kapur, I S Malik, J P Bagger, J R Anderson, K J Beatt, R J C Hall, for the CARDia Investigators*
- 552 Images in cardiology: Submitral aneurysm: unusual echocardiographic features *A Mohanty, A Saxena*
- 556 Images in cardiology: Acute anterior myocardial infarction obscured by diaphragmatic eventration *I P Gunatunga, J Ansari, R Andrews*
- 558 Images in cardiology: Prolonged sinus arrest after coronary artery spasm *J-W Ha, S-Y Cho*
- 560 Web Top 10
- 564 Images in cardiology: Management of complex, two chamber false aneurysm by thrombin injections *G G6rge, T Kunz*



See p 549