

## Editor

Roger J Hall

## Commissioning Editor

Iain Simpson

## Associate Editors

Adrian P Banning, Alain Berrebi, Eric Butchart, Filippo Crea, David Crossman, John L Gibbs, Bernard Lung, Andreas Mügge

## US Associate Editor

Catherine M Otto  
(Washington)

## JournalScan Editor

Iqbal S Malik

## Statistical Advisor

Ian Ford

## Deputy Editor

David Lefroy

## Series Editor, Education in Heart

Peter Mills

## Managing Editor

Janet O'Flaherty

## Technical Editor

John Weller

## Editorial Assistants

Andy Fosberry  
Stephanie Watkins

## International Advisory Board

Gianni de Angelini (UK)  
Fause Attie (Mexico)  
Philip E G Aylward (Australia)  
Gary Baxter (UK)  
George A Beller (USA)  
Martin R Bennett (UK)  
Nicholas A Boon (UK)  
Roger M Boyle (UK)  
Paulo G Camici (UK)  
Terry Campbell (Australia)  
Alfred Cheng (Singapore)  
Stuart M Cobbe (UK)  
Lawrence S Cohen (USA)  
Martin Cowie (UK)  
Nicolas Danchin (France)  
Henry J Dargie (UK)  
Christopher Davidson (UK)  
Mark A de Belder (UK)  
Pim J de Feyter (Netherlands)  
Carlo di Mario (UK)  
Jean-Noel Fabiani (France)  
Roberto Ferrari (Italy)  
Peter J Fitzgerald (USA)  
Keith A A Fox (UK)  
D S Gambhir (India)  
Clifford J Garratt (UK)  
Marc H Gewillig (Belgium)  
Sally Greaves (New Zealand)  
Jorgen Fischer Hansen (Denmark)  
Axel Haverich (Germany)  
Otto M Hess (Switzerland)  
Gerd Heusch (Germany)  
Pierre Jaïs (France)  
Jean Kachaner (France)  
Sanjiv Kaul (USA)  
Bruce Keogh (UK)  
Robert A Kloner (USA)  
Cornelius Kluyt (Netherlands)

Michael Komajda (France)  
S Krishnaswami (India)  
C C Lang (Malaysia)  
Herve LeMarec (France)  
Janet M McComb (UK)  
Bernard Meier (Switzerland)  
R Gordon Murray (UK)  
Dudley J Pennell (UK)  
Shahbudin H Rahimtoolah (USA)  
John Sanderson (Hong Kong)  
Maurice E Sarano (USA)  
Pinchas Sareli (South Africa)  
James Scott (UK)  
Ajay M Shah (UK)  
Richard Schilling (UK)  
Man Fai Shiu (UK)  
Jordi Soler-Soler (Spain)  
Giuseppe Specchia (Italy)  
Martin St John Sutton (USA)  
William G Stevenson (USA)  
Kenneth M Taylor (UK)  
Adam D Timmis (UK)  
James D Thomas (USA)  
Eric Topol (USA)  
Dimitris Tousoulis (Greece)  
Pavlos K Toutouzas (Greece)  
Alec Vahanian (France)  
Cees A Visser (Netherlands)  
Ludwig K von Segesser (Switzerland)  
Carole A Warnes (USA)  
Hugh Watkins (UK)  
Gary Webb (Canada)  
Sylvan Lee Weinberg (USA)  
Harvey D White (New Zealand)  
Neil Wilson (UK)  
Junichi Yoshikawa (Japan)  
Editor: *British Medical Journal*

## Instructions to authors

Full instructions are available online at [www.heartjnl.com/misc/ifora.shtml](http://www.heartjnl.com/misc/ifora.shtml)

If you do not have web access please contact the editorial office:  
Heart

9 Fitzroy Square

London W1T 5HW, UK

Telephone +44 (0) 20 7383 4006

Fax +44 (0) 20 7388 0323

Email [heartjournal@bmjgroup.com](mailto:heartjournal@bmjgroup.com)

## Subscription information

See page ii

## Copyright

© 2003 BMJ Publishing Group and British Cardiac Society. All rights reserved; no part of this publication may be reproduced, stored in a retrieval system, or transmitted in any form or by any means, electronic, mechanical, photocopying, recording, or otherwise without prior permission

Authors are required to grant *Heart* an exclusive licence to publish; further details available online at [www.heartjnl.com/misc/ifora.shtml](http://www.heartjnl.com/misc/ifora.shtml)

• *Heart* is published by BMJ Publishing Group and printed in UK on acid free paper by Stephens and George Magazines Limited, Merthyr Tydfil

• Periodicals postage paid, Rahway, NJ. Postmaster: send address changes to: *Heart*, c/o Mercury Airfreight International Ltd, 365 Blair Road, Avenel, NJ 07001, USA



See p 727



[www.publicationethics.org.uk](http://www.publicationethics.org.uk)

This journal is a member of and subscribes to the principles of the Committee on Publication Ethics

## Editorials

- 697 The Edinburgh heart valve study *K M Taylor*
- 699 Invasive assessment of myocardial bridges  
*M J Lovell, C J Knight*
- 701 Assessing perfusion and function in acute myocardial infarction: how and when?  
*L A Pierard*
- 704 The "ultrasonic stethoscope": is it of clinical value?  
*A Salustri, P Trambaiolo*
- 707 B Type natriuretic peptide: a good omen in myocardial ischaemia?  
*S P D'Souza, G F Baxter*

## Review

- 710 Risk of competitive sport in young athletes with heart disease  
*S Firoozi, S Sharma, W J McKenna*

## Cardiovascular medicine

- 715 Twenty year comparison of a Bjork-Shiley mechanical heart valve with porcine bioprostheses  
*H Oxenham, P Bloomfield, D J Wheatley, R J Lee, J Cunningham, R J Prescott, H C Miller*
- 722 Carbohydrates, dietary glycaemic load and glycaemic index, and risk of acute myocardial infarction  
*A Tavani, C Bosetti, E Negri, L S Augustin, D J A Jenkins, C La Vecchia*
- 727 Clinical utility and cost effectiveness of a personal ultrasound imager for cardiac evaluation during consultation rounds in patients with suspected cardiac disease  
*E C Vourvouri, L Y Koroleva, F J Ten Cate, D Poldermans, A F L Schinkel, R T van Domburg, W B Vletter, J R T C Roelandt*
- 731 Temporal evolution and functional outcome of no reflow: sustained and spontaneously reversible patterns following successful coronary recanalisation  
*L Galiuto, A Lombardo, A Maseri, L Santoro, I Porto, D Cianflone, A G Rebuzzi, F Crea*
- 738 Detection of scarred and viable myocardium using a new magnetic resonance imaging technique: blood oxygen level dependent (BOLD) MRI  
*M Eged, A Al-Mohammad, G D Waiter, T W Redpath, S K Semple, M Norton, A Welch, S Walton*
- 745 The influence of age, sex and other variables on the plasma level of N-terminal pro brain natriuretic peptide in a large sample of the general population  
*I Raymond, B A Groenning, P R Hildebrandt, J C Nilsson, M Baumann, J Trawinski, F Pedersen*
- 752 Pregnancy related complications in women with hypertrophic cardiomyopathy  
*R Thaman, A Varnava, M S Hamid, S Firoozi, B Sachdev, M Condon, J R Gimeno, R Murphy, P M Elliott, W J McKenna*
- 757 Progression of familial and non-familial dilated cardiomyopathy: long term follow up  
*V V Michels, D J Driscoll, F A Miller, T M Olson, E J Atkinson, C L Olswold, D J Schaid*

762 Left ventricular remodelling, and systolic and diastolic function in young adults with  $\beta$  thalassaemia major: a Doppler echocardiographic assessment and correlation with haematological data  
*G Bosi, R Crepaz, M R Gamberini, M Fortini, S Scarzia, E Bonsante, W Pitscheider, M Vaccari*

## Interventional cardiology and surgery

767 Adverse events in coronary artery bypass graft (CABG) trials: a systematic review and analysis  
*L Nalysnyk, K Fahrbach, M W Reynolds, S Z Zhao, S Ross*

773 High preprocedural non-HDL cholesterol is associated with enhanced oxidative stress and monocyte activation after coronary angioplasty: possible implications in restenosis  
*F Cipollone, M Fazio, A Iezzi, B Pini, F Costantini, D De Cesare, L Paloscia, G Materazzo, E D'Annunzio, T Bucciarelli, J Vecchiet, F Chiarelli, F Cuccurullo, A Mezzetti*

## Congenital heart disease

780 Pericardial effusion after open heart surgery for congenital heart disease  
*E W Y Cheung, S A Ho, K K Y Tang, A K T Chau, C S W Chiu, Y F Cheung*

## Scientific letters

785 The applicability of the Framingham coronary heart disease prediction function to black and minority ethnic groups in the UK  
*T P Quirke, P S Gill, J W Mant, T F Allan*

787 An audit of the implications of implementing NICE guidance on the use of implantable cardioverter-defibrillators  
*C J Plummer, J M McComb*

789 Transcardiac and transpulmonary gradients in the putative new cardiovascular hormone relaxin  
*C Fisher, S Al-Benna, A Kirk, J J Morton, J J V McMurray*

791 Cardiac abnormalities in patients with Leber's hereditary optic neuropathy  
*P Sorajja, M G Sweeney, R Chalmers, B Sachdev, P Syrris, M Hanna, N D Wood, W J McKenna, P M Elliott*

## Education in Heart

793 HIV and cardiovascular medicine  
*B D Prendergast*

801 Calcific aortic stenosis: from bench to the bedside—emerging clinical and cellular concepts  
*N M Rajamannan, B Gersh, R O Bonow*

806 Development of the heart: (1) Formation of the cardiac chambers and arterial trunks  
*A Moorman, S Webb, N A Brown, W Lamers, R H Anderson*

## JournalScan

815 Cardiovascular highlights from non-cardiology journals

## Electronic pages

e20 Persisting fever in a patient with brucella endocarditis: occult splenic abscess  
*M B Yilmaz, H L Kisacik, S Korkmaz*

## Miscellanea

698 Electronic pages

703 Images in cardiology: Area ablation of ventricular tachycardia in a patient with arrhythmogenic right ventricular cardiomyopathy  
*N M S de Groot, M J Schalij, E E van der Wall*

706 Images in cardiology: The "pop phenomenon" detected by phased array intracardiac echocardiography  
*M Takagi, I Toda, J Yoshikawa*

709 Web Top 10

726 Images in cardiology: Right atrial thrombus following closure of an atrial septal defect  
*M Yilmaz, Y Gurlertop, F Erdogan*

730 Images in cardiology: Infective endocarditis with progressive periaortic abscess formation in a previously healthy girl  
*M Weidenbach, A Pfeiffer, K Steidel*

737 Images in cardiology: Transcatheter embolisation of a large unilateral pulmonary arteriovenous malformation  
*G Joseph, P K Pati*

744 Images in cardiology: Coronary arterial sling operation  
*J Lund, H Kelbaek*

751 Images in cardiology: Different presentation of hypertrophic cardiomyopathy in monozygotic twins  
*P Palka, A Lange, D J Burstow*

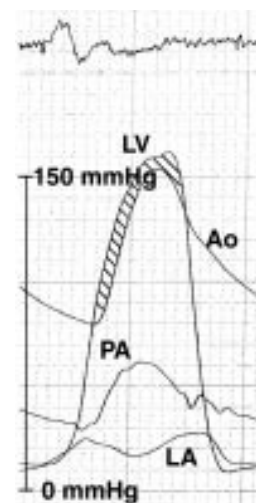
761 Images in cardiology: Partial anomalous pulmonary venous connection or scimitar syndrome  
*M Vanderheyden, M Goethals, L Van Hoe*

772 Images in cardiology: Transcatheter closure of large fistula between left main coronary artery and right atrium using Amplatzer duct occluder  
*J J Tang, S H Zhou, X Q Shen*

783 Images in cardiology: Pacemaker lead fracture  
*A Saha, J Tan, B Prendergast*

784 Images in cardiology: Femoral vein delivery of contrast improves transoesophageal detection of intracardiac shunting through a patent foramen ovale  
*N Halmey, M J Stewart, M A de Belder*

790 Images in cardiology: Severe pulmonary hypertension in a patient with hypertrophic cardiomyopathy: response to alcohol septal ablation  
*E S Brilakis, R A Nishimura*



See p 790