

Editor

Roger J Hall

Commissioning Editor

Iain Simpson

Associate Editors

Adrian P Banning, Eric Butchart, Filippo Crea, David Crossman,
John L Gibbs, Bernard Jung, Andreas Mügge

US Associate Editor

Catherine M Otto
(Washington)

JournalScan Editor

Iqbal S Malik

Statistical Advisor

Ian Ford

Deputy Editor

David Lefroy

Series Editor, Education in Heart

Peter Mills

Managing Editor

Janet O'Flaherty

Technical Editor

John Weller

Editorial Assistants

Andy Fosberry
Stephanie Watkins

International Advisory Board

Gianni de Angelini (UK)
Fause Attie (Mexico)
Philip E G Aylward (Australia)
Gary Baxter (UK)
George A Beller (USA)
Martin R Bennett (UK)
Nicholas A Boon (UK)
Roger M Boyle (UK)
Paulo G Camici (UK)
Terry Campbell (Australia)
Alfred Cheng (Singapore)
Stuart M Cobbe (UK)
Lawrence S Cohen (USA)
Martin Cowie (UK)
Nicolas Danchin (France)
Henry J Dargie (UK)
Christopher Davidson (UK)
Mark A de Belder (UK)
Pim J de Feyter (Netherlands)
Carlo di Mario (UK)
Jean-Noel Fabiani (France)
Roberto Ferrari (Italy)
Peter J Fitzgerald (USA)
Keith A A Fox (UK)
D S Gambhir (India)
Clifford J Garratt (UK)
Marc H Gewillig (Belgium)
Sally Greaves (New Zealand)
Jorgen Fischer Hansen
(Denmark)
Axel Haverich (Germany)
Otto M Hess (Switzerland)
Gerd Heusch (Germany)
Pierre Jaïs (France)
Jean Kachaner (France)
Sanjiv Kaul (USA)
Bruce Keogh (UK)
Robert A Kloner (USA)
Cornelius Kluyt (Netherlands)

Michael Komajda (France)
S Krishnaswami (India)
C C Lang (Malaysia)
Herve LeMarec (France)
Janet M McComb (UK)
Bernard Meier (Switzerland)
R Gordon Murray (UK)
Dudley J Pennell (UK)
Shahbudin H Rahimtoolah (USA)
John Sanderson (Hong Kong)
Maurice E Sarano (USA)
Pinchas Sareli (South Africa)
James Scott (UK)
Ajay M Shah (UK)
Richard Schilling (UK)
Man Fai Shiu (UK)
Jordi Soler-Soler (Spain)
Giuseppe Specchia (Italy)
Martin St John Sutton (USA)
William G Stevenson (USA)
Kenneth M Taylor (UK)
Adam D Timmis (UK)
James D Thomas (USA)
Eric Topol (USA)
Dimitris Tousoulis (Greece)
Pavlos K Toutouzas (Greece)
Alec Vahanian (France)
Cees A Visser (Netherlands)
Ludwig K von Segesser
(Switzerland)
Carole A Warnes (USA)
Hugh Watkins (UK)
Gary Webb (Canada)
Sylvan Lee Weinberg (USA)
Harvey D White (New Zealand)
Neil Wilson (UK)
Junichi Yoshikawa (Japan)
Editor: *British Medical
Journal*

Instructions to authors

Full instructions are available online at [www.heartjnl.com/
misc/fora.shtml](http://www.heartjnl.com/misc/fora.shtml)

If you do not have web access please contact the editorial office:
Heart

9 Fitzroy Square

London W1T 5HW, UK

Telephone +44 (0) 20 7383 4006

Fax +44 (0) 20 7388 0323

Email heartjournal@bmjgroup.com

Subscription information

See inside back cover

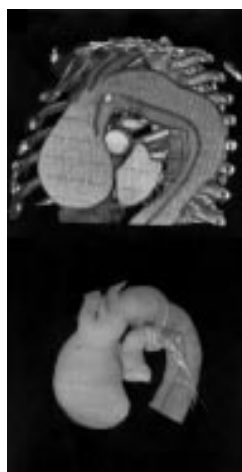
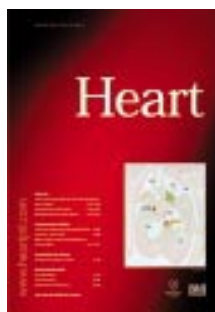
Copyright

© 2003 BMJ Publishing Group and British Cardiac Society. All rights reserved; no part of this publication may be reproduced, stored in a retrieval system, or transmitted in any form or by any means, electronic, mechanical, photocopying, recording, or otherwise without prior permission

Authors are required to grant *Heart* an exclusive licence to publish; further details available online at [www.heartjnl.com/
misc/fora.shtml](http://www.heartjnl.com/misc/fora.shtml)

• *Heart* is published by BMJ Publishing Group and printed in UK on acid free paper by Stephens and George Magazines Limited, Merthyr Tydfil

• Periodicals postage paid, Rahway, NJ. Postmaster: send address changes to: *Heart*, c/o Mercury Airfreight International Ltd, 365 Blair Road, Avenel, NJ 07001, USA



See p 838



www.publicationethics.org.uk

This journal is a member of and subscribes to the principles of the Committee on Publication Ethics

Editorials

- 817 Are there sex differences in risk factors for coronary heart disease? Maternal versus paternal transmission *R F Redberg*
- 819 Fabry disease *S F Nagueh*
- 821 The putative role of isoprostanes in human cardiovascular physiology and disease: following the fingerprints *J-L Cracowski*
- 823 Endovascular treatment of thoracic aortic disease *R E Bell, J F Reidy*
- 825 Open surgery for thoracic aortic disease *H J Safi, P R Taylor*
- 827 How many cath labs do we need? *D Hackett, for the British Cardiac Society Guidelines and Medical Practice Committee*

Review

- 830 Enhanced external counterpulsation for refractory angina pectoris *R M Sinval, R M Gowda, I A Khan*

Cardiovascular medicine

- 834 Is maternal transmission of coronary heart disease risk stronger than paternal transmission? *S Kinra, G Davey Smith, M Okasha, P McCarron, J McEwen*
- 839 Presentation, management, and outcome of out of hospital cardiopulmonary arrest: comparison by underlying aetiology *J P Pell, J M Sirel, A K Marsden, I Ford, N L Walker, S M Cobbe*
- 843 A prospective study of long term prognosis in young myocardial infarction survivors: the prognostic value of angiography and exercise testing *A A Awad-Elkarim, J P Bagger, C J Albers, J S Skinner, P C Adams, R J C Hall*
- 848 The current cost of angina pectoris to the National Health Service in the UK *S Stewart, N Murphy, A Walker, A McGuire, J J V McMurray*
- 854 Acetylcholinesterase inhibition with pyridostigmine improves heart rate recovery after maximal exercise in patients with chronic heart failure *A S Androne, K Hryniewicz, R Goldsmith, A Arwady, S D Katz*
- 859 Colour tissue velocity imaging can show resynchronisation of longitudinal left ventricular contraction pattern by biventricular pacing in patients with severe heart failure *P Schuster, S Faerstrand, O-J Ohm*
- 865 Trends and ethnic differences in hospital admissions and mortality for congestive heart failure in the elderly in Singapore, 1991 to 1998 *T P Ng, M Niti*
- 871 Increased urinary 15-F_{2t}-isoprostane concentrations in patients with non-ischaemic congestive heart failure: a marker of oxidative stress *M Nonaka-Sarukawa, K Yamamoto, H Aoki, H Takano, T Katsuki, U Ikeda, K Shimada*

- 875 Normal values of B type natriuretic peptide in infants, children, and adolescents *A Koch, H Singer*
- 879 N-terminal pro B type natriuretic peptide, but not the new putative cardiac hormone relaxin, predicts prognosis in patients with chronic heart failure *C Fisher, C Berry, L Blue, J J Morton, J McMurray*
- 882 QT dispersion and left ventricular morphology in patients with hypertrophic cardiomyopathy *K Sakata, M Shimizu, H Ino, M Yamaguchi, H Terai, K Hayashi, M Kiyama, T Hayashi, M Inoue, H Mabuchi*
- 887 Long term effects of nisoldipine on the progression of coronary atherosclerosis and the occurrence of clinical events: the NICOLE study *J A Dens, W J Desmet, P Coussement, I K De Scheerder, K Kostopoulos, P Kerdsinchai, C Supanantaroeck, J H Piessens*
- 893 Long term statin treatment reduces lipoprotein(a) concentrations in heterozygous familial hypercholesterolaemia *S van Wissen, T J Smilde, M D Trip, Th de Boo, J J P Kastelein, A F H Stalenhoef*

Interventional cardiology and surgery

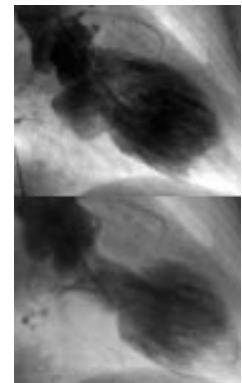
- 897 Neuroprotection during cardiac surgery: a randomised trial of a platelet activating factor antagonist *D P Taggart, S M Browne, D T Wade, P W Halligan*
- 901 Risk factors for pacemaker implantation following aortic valve replacement: a single centre experience *G Limongelli, V Ducceschi, A D'Andrea, A Renzulli, B Sarubbi, M De Feo, F Cerasuolo, R Calabrò, M Cotrufo*

Congenital heart disease

- 905 The efficacy and safety of stent redilatation in congenital heart disease *C Duke, E Rosenthal, S A Qureshi*
- 913 Review of diagnosis, treatment, and outcome of fetal atrial flutter compared with supraventricular tachycardia *M Krapp, T Kohl, J M Simpson, G K Sharland, A Katalinic, U Gembruch*
- 918 Transcatheter closure of perimembranous ventricular septal defects with the Amplatzer asymmetric ventricular septal defect occluder: preliminary experience in children *B D Thanopoulos, G S Tsaousis, E Karanasios, N G Eleftherakis, C Paphitis*

Basic research

- 923 Real time quantification of low temperature radiofrequency ablation lesion size using phased array intracardiac echocardiography in the canine model: comparison of two dimensional images with pathological lesion characteristics *A Doi, M Takagi, I Toda, M Teragaki, M Yoshiyama, K Takeuchi, J Yoshikawa*



See p 927

Scientific letters

- 928 Acute aortic syndrome: proposal for a novel classification *B van der Loo, R Jenni*
- 929 Fabry disease: a mimic for obstructive hypertrophic cardiomyopathy? *S R Ommen, R A Nishimura, W D Edwards*
- 931 CD14 promoter polymorphism is associated with acute myocardial infarction resulting from insignificant coronary artery stenosis *T Kondo, M Ohno, K Shimokata, S Iino, Y Iden, T Murohara, M Hirai*
- 933 Excessive pulmonary autograft dilatation causes important aortic regurgitation *R B Hokken, J J M Takkenberg, L A van Herwerden, J R T C Roelandt, A J J C Bogers*
- 935 Increased platelet sodium–hydrogen exchanger activity in patients with variant angina *G A Lanza, E De Candia, E Romagnoli, L Messano, A Sestito, R Landolfi, F Crea, A Maseri*
- 937 Prevalence of haemoptysis in adults with pulmonary atresia and ventricular septal defect, and the role of mammary artery collateral vessels *K Greaves, P Bye, G Parker, D S Celermajer*

Education in Heart

- 939 Atrial fibrillation: classification, pathophysiology, mechanisms and drug treatment *V Markides, R J Schilling*
- 944 Carotid artery stenting *F Liistro, C Di Mario*
- 949 Development of the heart: (2) Septation of the atrium and ventricles *R H Anderson, S Webb, N A Brown, W Lamers, A Moorman*

JournalScan

- 859 Cardiovascular highlights from non-cardiology journals

Electronic pages

- e21 Isolated left ventricular non-compaction: cardiomyopathy with homogeneous transmural and heterogeneous segmental perfusion *A C Borges, D Kivelitz, G Baumann*

e22	Acquired right coronary artery fistula draining to the right ventricle: angiographic documentation of first appearance following reperfusion after acute myocardial infarction, with subsequent spontaneous closure <i>P Schanzenbächer, J Bauersachs</i>	838	Images in cardiology: Electrocardiographic gated multislice computed tomography of the thoracic aorta <i>G J Morgan-Hughes, C A Roobottom, A J Marshal</i>
e23	Anomalous origin of the circumflex artery and patent foramen ovale: a rare cause of myocardial ischaemia after percutaneous closure of the defect <i>G Casolo, G F Gensini, G Santoro, L Rega</i>	847	Electronic pages
	858	Images in cardiology: Thinned myocardial fibrosis with thrombus in the dilated form of hypertrophic cardiomyopathy demonstrated by multislice computed tomography <i>N Funabashi, K Yoshida, I Komuro</i>
	Miscellanea	870	Images in cardiology: Cardiogenic shock in a young woman revealing juvenile haemochromatosis <i>E Durand, J M Grinda, P Bruneval</i>
818	Images in cardiology: Patency of multiple coronary artery bypass grafts demonstrated by multislice CT <i>N Funabashi, K Teramoto, I Komuro</i>	886	Images in cardiology: Iatrogenic left coronary artery dissection <i>W J Hobbs, A Chauhan, D Roberts</i>
822	Images in cardiology: Myocardial bridge-like arterial graft compression by draining tube <i>E Sbarouni, Z S Kyriakides, D Th Kremastinos</i>	927	Images in cardiology: Apical thrombus associated with left ventricular apical ballooning <i>C F Barrera-Ramirez, J M Jimenez-Mazuecos, F Alfonso</i>
829	Images in cardiology: Ventricular tachycardia following head injury <i>S S Khogali, J N Townsend, H Marshal</i>	930	Images in cardiology: Improved myocardial viability following intramyocardial autologous bone marrow injection after acute myocardial infarction <i>G Beran, D Glogar, I M Lang</i>
833	Electronic pages	938	Web Top 10