

## Editor

Roger J Hall

## Commissioning Editor

Iain Simpson

## Associate Editors

Adrian P Banning, Eric Butchart, Filippo Crea, David Crossman, John L Gibbs, Bernard Jung, Andreas Mügge

## US Associate Editor

Catherine M Otto  
(Washington)

## JournalScan Editor

Iqbal S Malik

## Statistical Advisor

Ian Ford

## International Advisory Board

Gianni de Angelini (UK)  
Faustine Attie (Mexico)  
Philip E G Aylward (Australia)  
Gary Baxter (UK)  
George A Beller (USA)  
Martin R Bennett (UK)  
Nicholas A Boon (UK)  
Roger M Boyle (UK)  
Paulo G Camici (UK)  
Terry Campbell (Australia)  
Alfred Cheng (Singapore)  
Stuart M Cobbe (UK)  
Lawrence S Cohen (USA)  
Martin Cowie (UK)  
Nicolas Danchin (France)  
Henry J Dargie (UK)  
Christopher Davidson (UK)  
Mark A de Belder (UK)  
Pim J de Feyter (Netherlands)  
Carlo di Mario (UK)  
Jean-Noel Fabiani (France)  
Roberto Ferrari (Italy)  
Peter J Fitzgerald (USA)  
Keith A A Fox (UK)  
D S Gambhir (India)  
Clifford J Garratt (UK)  
Marc H Gewillig (Belgium)  
Sally Greaves (New Zealand)  
Jorgen Fischer Hansen (Denmark)  
Axel Haverich (Germany)  
Otto M Hess (Switzerland)  
Gerd Heusch (Germany)  
Pierre Jaïs (France)  
Jean Kachaner (France)  
Sanjiv Kaul (USA)  
Bruce Keogh (UK)  
Robert A Kloner (USA)

## Deputy Editor

David Lefroy

## Series Editor, Education in Heart

Peter Mills

## Managing Editor

Janet O'Flaherty

## Technical Editor

John Weller

## Editorial Assistants

Andy Fosberry  
Stephanie Watkins

Cornelius Kluft (Netherlands)

Michael Komajda (France)

S Krishnaswami (India)

C C Lang (Malaysia)

Herve LeMarec (France)

Janet M McComb (UK)

Bernard Meier (Switzerland)

R Gordon Murray (UK)

Dudley J Pennell (UK)

Shahbudin H Rahimtoolah (USA)

John Sanderson (Hong Kong)

Maurice E Sarano (USA)

Pinchas Sareli (South Africa)

James Scott (UK)

Ajay M Shah (UK)

Richard Schilling (UK)

Man Fai Shiu (UK)

Jordi Soler-Soler (Spain)

Giuseppe Specchia (Italy)

Martin St John Sutton (USA)

William G Stevenson (USA)

Kenneth M Taylor (UK)

Adam D Timmis (UK)

James D Thomas (USA)

Eric Topol (USA)

Dimitris Tousoulis (Greece)

Pavlos K Toutouzas (Greece)

Alec Vahanian (France)

Cees A Visser (Netherlands)

Ludwig K von Segesser (Switzerland)

Carole A Warnes (USA)

Hugh Watkins (UK)

Gary Webb (Canada)

Sylvan Lee Weinberg (USA)

Harvey D White (New Zealand)

Neil Wilson (UK)

Junichi Yoshikawa (Japan)

Editor: *British Medical Journal*

## Instructions to authors

Full instructions are available online at [www.heartjnl.com/misc/ifora.shtml](http://www.heartjnl.com/misc/ifora.shtml)  
If you do not have web access please contact the editorial office:  
Heart  
9 Fitzroy Square  
London W1T 5HW, UK  
Telephone +44 (0) 20 7383 4006  
Fax +44 (0) 20 7388 0323  
Email [heartjournal@bmjgroup.com](mailto:heartjournal@bmjgroup.com)

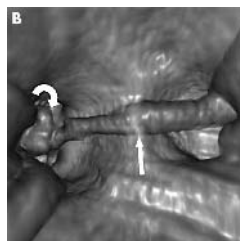
## Subscription information

See inside back cover

## Copyright

© 2004 BMJ Publishing Group and British Cardiac Society. All rights reserved; no part of this publication may be reproduced, stored in a retrieval system, or transmitted in any form or by any means, electronic, mechanical, photocopying, recording, or otherwise without prior permission  
Authors are required to grant *Heart* an exclusive licence to publish; further details available online at [www.heartjnl.com/misc/ifora.shtml](http://www.heartjnl.com/misc/ifora.shtml)

- *Heart* is published by BMJ Publishing Group, typeset by The Charlesworth Group, and printed in UK on acid-free paper by Unwin Brothers, Woking
- Periodicals postage paid, Rahway, NJ. Postmaster: send address changes to: *Heart*, c/o Mercury Airfreight International Ltd, 365 Blair Road, Avenel, NJ 07001, USA



See p 36

## Editorials

- 1 Myocardial gene and cell delivery *P D Lambiase, M S Marber*
- 3 Non-contact mapping of the left ventricle and new insights into the mechanisms for success of biventricular pacing *R J Schilling*
- 5 Management of valvular aortic stenosis in children *J D R Thomson*
- 7 From malignant mutations to malignant domains: the continuing search for prognostic significance in the mutant genes causing hypertrophic cardiomyopathy *S L Van Driest, B J Maron, M J Ackerman*

## Review

- 9 Is impairment of ischaemic preconditioning by sulfonylurea drugs clinically important? *J J Meier, B Gallwitz, W E Schmidt, A Mügge, M A Nauck*

## Featured case report

- 13 Long QT syndrome and life threatening arrhythmia in a newborn: molecular diagnosis and treatment response *E Schulze-Bahr, H Fenge, D Etzrodt, W Haverkamp, G Mönnig, H Wedekind, G Breithardt, H-G Kehl*

## Cardiovascular medicine

- 17 Variable left ventricular activation pattern in patients with heart failure and left bundle branch block *J W-H Fung, C-M Yu, G Yip, Y Zhang, H Chan, C-C Kum, J E Sanderson*
- 20 Growth of girls who later develop coronary heart disease *T Forsén, C Osmond, J G Eriksson, D J P Barker*
- 25 Raised concentrations of macrophage colony stimulating factor in severe unstable angina beyond the acute phase are strongly predictive of long term outcome *L S Rallidis, M G Zolindaki, P C Pentzeridis, K P Pouloupoulos, A H Velissariadou, T S Apostolou*
- 30 Impairment of cardiopulmonary receptor sensitivity in the early phase of heart failure *P A Modesti, G Polidori, I Bertolozzi, S Vanni, I Cecioni*
- 37 Relation between aortic stiffness and left ventricular diastolic function in patients with hypertension, diabetes, or both *M Eren, S Gorgulu, N Uslu, S Celik, B Dagdeviren, T Tezel*
- 44 Non-contact left ventricular endocardial mapping in cardiac resynchronisation therapy *P D Lambiase, A Rinaldi, J Hauck, M Mobb, D Elliott, S Mohammad, J S Gill, C A Bucknall*
- 52 Does the use of a syncope diagnostic protocol improve the investigation and management of syncope? *D J Farwell, A N Sulke*
- 59 Long term follow up of radiofrequency catheter ablation of atrial flutter: clinical course and predictors of atrial fibrillation occurrence *E Bertaglia, F Zoppo, A Bonso, A Proclemer, R Verlato, L Corò, R Mantovan, D D'Este, F Zerbo, P Pascotto, on behalf of the Northeastern Italian Study on Atrial Flutter Ablation Investigators*

## Interventional cardiology and surgery

- 64 Mechanism of improvement in exercise capacity after the maze procedure combined with mitral valve surgery *S Yuda, S Nakatani, Y Kosakai, T Satoh, Y Goto, M Yamagishi, K Bando, S Kitamura, K Miyatake*



[www.publicationethics.org.uk](http://www.publicationethics.org.uk)  
This journal is a member of and subscribes to the principles of the Committee on Publication Ethics

**Congenital heart disease**

- 70 Long term results of percutaneous balloon valvoplasty of congenital aortic stenosis: independent predictors of outcome *O Reich, P Tax, J Marek, V Rázek, J Gilík, V Tomek, V Chaloupecký, H Bartáková, J Škovránek*
- 77 Balloon aortic valvoplasty in paediatric patients: progressive aortic regurgitation is common *C Balmer, M Beghetti, M Fasnacht, B Friedli, U Arbenz*

**Basic research**

- 82 G20210A Prothrombin gene polymorphism and coronary ischaemic syndromes: a phenotype-specific meta-analysis of 12 034 subjects *F Burzotta, K Paciaroni, V De Stefano, F Crea, A Maseri, G Leone, F Andreotti*
- 87 Interventional magnetic resonance imaging for guiding gene and cell transfer in the heart *I M Barbash, J Leor, M S Feinberg, A Tessone, S Aboulafia-Etzion, A Orenstein, J Ruiz-Cabello, J S Cohen, Y Mardor*

**Scientific letters**

- 92 Detection of subclinical atherosclerosis by electron beam tomography in females with heterozygous familial hypercholesterolaemia *R D Santos, R S Meneghelo, A P M Chacra, T L R Martinez, J A Ramires, J A M Carvalho*
- 95 Adequate intracoronary adenosine doses to achieve maximum hyperaemia in coronary functional studies by pressure derived fractional flow reserve: a dose response study *R Lopez-Palop, D Saura, E Pinar, I Lozano, F Pérez-Lorente, F Picó, M Valdez*
- 97 Atrial and brain natriuretic peptides as markers of response to resynchronisation therapy *S G Molhoek, J J Bax, L van Erven, M Bootsma, P Steendijk, E Lentjes, E Boersma, A van der Laarse, E E van der Wall, M J Schalij*

**Education in Heart**

- 99 Clinical implications of the new definition of myocardial infarction *John K French, Harvey D White*
- 107 The French paradox: lessons for other countries *Jean Ferrières*
- 112 Learning on the Web: Case 3: Acute chest pain *Christopher S R Baker*
- 113 Participatory learning: a Swedish perspective *Anna Kiessling*

**JournalScan**

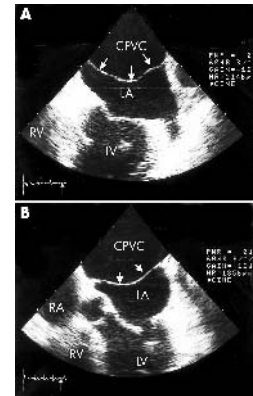
- 117 Cardiovascular highlights from non-cardiology journals

**Electronic pages**

- e1 Transient abnormal Q waves during exercise electrocardiography *F F Alameddine, A M Zafari*
- e2 Paradoxical increase of pulmonary vascular resistance during testing of inhaled iloprost *M Emmel, B Keuth, S Schickendantz*
- e3 Rhabdomyolysis induced by a single dose of statin *S Jamil, P Iqbal*
- e4 Primary pericardial mesothelioma presenting as pericardial constriction: a case report *S Suman, P Schofield, S Large*
- e5 Author index
- e6 Subject index

**Miscellanea**

- 16 Images in cardiology: Calcium channel blocker induced gum hypertrophy: no class distinction *Y P Samarasinghe, A Cox, M D Feher*
- 19 Images in cardiology: Neoplastic shock *T S Hildebrand, B Bockholdt, J S Jürgensen*
- 19 Electronic pages
- 24 Images in cardiology: Extreme hypertrophic cardiomyopathy *B J Maron, S A Casey, A K Almquist*
- 36 Images in cardiology: Electron beam tomography of an interpulmonary saddle embolus *C N H Enzweiler, A E Lembcke, B Hamm*
- 43 Images in cardiology: Rhabdomyoma as accessory pathway: electrophysiologic and morphologic confirmation *M Emmel, K Brockmeier, N Sreeram*
- 51 Images in cardiology: Unusual method for occlusive coronary sinus angiography *B Strohmer, H-J Kofler*
- 58 Images in cardiology: Pacemaker syndrome *Y Abn, J G Cho*
- 58 Electronic pages
- 63 Images in cardiology: Echocardiographic diagnosis of cor triatriatum sinister in the adult *R D Slight, O C Nzewi, P S Mankad*
- 69 From BMJ Journals
- 76 Images in cardiology: Acute thrombosis of an extracardiac Fontan conduit *J A E Kammeraad, N Steer*
- 81 Images in cardiology: Pseudo-ventricular tachycardia: electrocardiographic artefact mimicking non-sustained polymorphic ventricular tachycardia in a patient evaluated for syncope *A Verecke*
- 94 Images in cardiology: Pulmonary atresia with intact ventricular septum and right coronary artery to right ventricle fistula detected in utero *M Emmel, R Bald, K Brockmeier*
- 96 Web Top 10



See p 63