

Editor

Roger J Hall

Commissioning Editor

Iain Simpson

Associate Editors

Adrian P Banning, Eric Butchart, Filippo Crea, David Crossman, John L Gibbs, Bernard Jung, Andreas Mügge, Petros Nihoyannopoulos

US Associate Editor

Catherine M Otto
(Washington)

JournalScan Editor

Iqbal S Malik

Statistical Advisor

Ian Ford

International Advisory Board

Gianni de Angelini (UK)
Fause Attie (Mexico)
Philip E G Aylward (Australia)
Gary Baxter (UK)
George A Beller (USA)
Martin R Bennett (UK)
Nicholas A Boon (UK)
Roger M Boyle (UK)
Paulo G Camici (UK)
Terry Campbell (Australia)
Alfred Cheng (Singapore)
Stuart M Cobbe (UK)
Lawrence S Cohen (USA)
Martin Cowie (UK)
Nicolas Danchin (France)
Henry J Dargie (UK)
Christopher Davidson (UK)
Mark A de Belder (UK)
Pim J de Feyter (Netherlands)
Carlo di Mario (UK)
Jean-Noel Fabiani (France)
Roberto Ferrari (Italy)
Peter J Fitzgerald (USA)
Keith A A Fox (UK)
D S Gambhir (India)
Clifford J Garratt (UK)
Marc H Gewillig (Belgium)
Sally Greaves (New Zealand)
Jorgen Fischer Hansen (Denmark)
Axel Haverich (Germany)
Otto M Hess (Switzerland)
Gerd Heusch (Germany)
Pierre Ja'fks (France)
Jean Kachaner (France)
Sanjiv Kaul (USA)
Bruce Keogh (UK)
Robert A Kloner (USA)

Instructions to authors

Full instructions are available online at www.heartjnl.com/misc/ifora.shtml
If you do not have web access please contact the editorial office:
Heart
9 Fitzroy Square
London W1T 5HW, UK
Telephone +44 (0) 20 7383 4006
Fax +44 (0) 20 7388 0323
Email heartjournal@bmjgroup.com

Subscription information

See p iv

Copyright

© 2004 BMJ Publishing Group and British Cardiac Society. All rights reserved; no part of this publication may be reproduced, stored in a retrieval system, or transmitted in any form or by any means, electronic, mechanical, photocopying, recording, or otherwise without prior permission
Authors are required to grant *Heart* an exclusive licence to publish; further details available online at www.heartjnl.com/misc/ifora.shtml
• *Heart* is published by BMJ Publishing Group, typeset by The Charlesworth Group, and printed in UK on acid-free paper by Unwin Brothers, Woking
• Periodicals postage paid, Rahway, NJ. Postmaster: send address changes to: *Heart*, c/o Mercury Airfreight International Ltd, 365 Blair Road, Avenel, NJ 07001, USA

Deputy Editor

David Lefroy

Series Editor, Education in Heart

Peter Mills

Managing Editor

Janet O'Flaherty

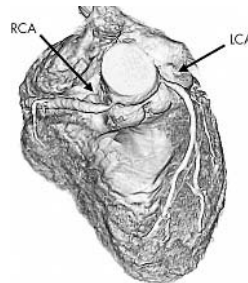
Technical Editor

John Weller

Editorial Assistants

Andy Fosberry
Stephanie Watkins

Cornelius Klufft (Netherlands)
Michael Komajda (France)
S Krishnaswami (India)
C C Lang (Malaysia)
Herve LeMarec (France)
Janet M McComb (UK)
Bernard Meier (Switzerland)
R Gordon Murray (UK)
Dudley J Pennell (UK)
Shahbudin H Rahimtoolah (USA)
John Sanderson (Hong Kong)
Maurice E Sarano (USA)
Pinchas Sareli (South Africa)
James Scott (UK)
Ajay M Shah (UK)
Richard Schilling (UK)
Man Fai Shiu (UK)
Jordi Soler-Soler (Spain)
Giuseppe Specchia (Italy)
Martin St John Sutton (USA)
William G Stevenson (USA)
Kenneth M Taylor (UK)
Adam D Timmis (UK)
James D Thomas (USA)
Eric Topol (USA)
Dimitris Tousoulis (Greece)
Pavlos K Toutouzas (Greece)
Alec Vahanian (France)
Cees A Visser (Netherlands)
Ludwig K von Segesser (Switzerland)
Carole A Warnes (USA)
Hugh Watkins (UK)
Gary Webb (Canada)
Sylvan Lee Weinberg (USA)
Harvey D White (New Zealand)
Neil Wilson (UK)
Junichi Yoshikawa (Japan)
Editor: *British Medical Journal*



See p 136



www.publicationethics.org.uk
This journal is a member of and subscribes to the principles of the Committee on Publication Ethics

Editorials

- 119 New tools for assessing microvascular obstruction in patients with ST elevation myocardial infarction
J A de Lemos, J J Warner
- 121 Methotrexate eluting stents: to modify or cure?
A C Morton, J Gunn
- 123 Optimal therapeutic strategies in the setting of post-infarct no reflow: the need for a pathogenetic classification
L Galiuto
- 126 The extents of mitral leaflet opening and closure are determined by left ventricular systolic function
S Kaul

Review

- 129 Atrial pacing for the prevention of atrial fibrillation after coronary artery bypass graft surgery: a review of the literature
R A Archbold, R J Schilling

Featured case report

- 134 Pacing extremely old patients: who decides—the doctor, the patient, or the relatives?
G M Sayers, H W L Bethell

Mini-symposium

- 136 Myocardial hibernation and heart failure: introduction
P G Camici
- 137 Fundamental concepts in myocardial viability assessment revisited: when knowing how much is “alive” is not enough
R J Kim, D J Shah
- 141 Hibernation and heart failure
P G Camici
- 144 Surgery for hibernation
J Pepper

Cardiovascular medicine

- 146 New support for clarifying the relation between ST segment resolution and microvascular function: degree of ST segment resolution correlates with the pressure derived collateral flow index
M Sezer, Y Nisanci, B Umman, E Yilmaz, A Olcay, F Erzen, O Ozsaruhan
- 151 Increased serum concentrations of soluble CD95/Fas and caspase 1/ICE in patients with acute angina
H J Ankersmit, T Weber, J Auer, G Roth, M Brunner, E Kvas, B Moser, S Spreitzer, Q-V Tran, D Janssen, P Hartl, E Wolner, G Boltz-Nitulescu, B Eber
- 155 Hyperuricaemia does not impair cardiovascular function in healthy adults
W S Waring, S H Adwani, O Breukels, D J Webb, S R J Maxwell
- 160 Catheter based intracoronary brachytherapy leads to increased platelet activation
M Jaster, V Fuster, P Rosenthal, M Pauschinger, Q-V Tran, D Janssen, W Hinkelbein, P Schwimmbeck, H-P Schultheiss, U Rauch
- 165 ECGSIM: an interactive tool for studying the genesis of QRST waveforms
A van Oosterom, T F Oostendorp
- 169 Is Mobitz type I atrioventricular block benign in adults?
D B Shaw, J I Gowers, C A Kekwick, K H J New, A W T Whistance
- 175 Pulsed wave Doppler tissue echocardiography assessment of the long axis function of the right and left ventricles during the early neonatal period
K Mori, R Nakagawa, M Nii, T Edagawa, Y Takehara, M Inoue, Y Kuroda

Interventional cardiology and surgery

- 181 Nicorandil versus isosorbide dinitrate as adjunctive treatment to direct balloon angioplasty in acute myocardial infarction *N Ikeda, T Yasu, N Kubo, S Hashimoto, Y Tsuruya, M Fujii, M Kawakami, M Saito*

Congenital heart disease

- 186 Percutaneous closure of patent foramen ovale: impact of device design on safety and efficacy *M Schwerzmann, S Windecker, A Wahl, H Mehta, K Nedelchev, H Mattle, C Seiler, B Meier*
- 191 Improved early ventricular performance with a right ventricle to pulmonary artery conduit in stage 1 palliation for hypoplastic left heart syndrome: evidence from strain Doppler echocardiography *M L Hughes, L S Shekerdemian, C P Brizard, D J Penny*

Basic research

- 195 Methotrexate loaded SAE coated coronary stents reduce neointimal hyperplasia in a porcine coronary model *Y Huang, K Salu, X Liu, S Li, L Wang, E Verbeken, J Bosmans, I De Scheerder*
- 200 The forces generated within the musculature of the left ventricular wall *P P Lunkenheimer, K Redmann, J Florek, U Fassnacht, C W Cryer, F Wübbeling, P Niederer, R H Anderson*

Scientific letters

- 208 Obtaining informed consent from patients in the early phase of acute myocardial infarction: physicians' experiences and attitudes *A Ågård, J Herlitz, G Hermerén*
- 211 Altered short term heart rate variability with spinal cord stimulation in chronic refractory angina: evidence for the presence of procedure related cardiac sympathetic blockade *R Moore, D Groves, J Nolan, D Scutt, J Pumpirla, M R Chester*
- 213 Carer knowledge of children's medical problems in a paediatric cardiology outpatient setting *J Wray, G Small, B Freedman, R C G Franklin*
- 215 Ventilatory response to exercise in patients after correction of cyanotic congenital heart disease: relation with clinical outcome after surgery *T Reybrouck, D Boshoff, L Vanhees, J Defoor, M Gewillig*
- 217 Assessment of depression following acute myocardial infarction using the Beck depression inventory *R P Steeds, D Bickerton, M J Smith, R Muthusamy*

Education in Heart

- 219 Indications for the closure of patent foramen ovale *M J Landzberg, P Khairy*
- 225 Chronic therapeutically refractory angina pectoris *M J L DeJongste, R A Tio, R D Foreman*
- 231 Implantable cardioverter-defibrillator treatment and resynchronisation in heart failure *C Linde*

JournalScan

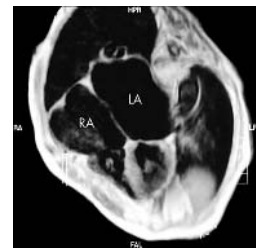
- 235 Cardiovascular highlights from non-cardiology journals

Electronic pages

- e7 Tachycardiomyopathy: a diagnosis not to be missed *N L Walker, S M Cobbe, D H Birnie*
- e8 Computed tomographic virtual cardioscopy in a case of left atrial myxoma *H-W Chen, S-J Chen, I-S Chiu*
- e9 Rare case of heart failure caused by compression of the left atrium by a thoracic aortic aneurysm *N M Gandhi, M Greaves, N H Brooks*
- e10 Masquerade: a malignant arrhythmia masquerading as benign *R Nandakumar, J C Patel, P Broadhurst*

Miscellanea

- 125 Images in cardiology: The paradoxical finding of mitral valve incompetence and cor triatriatum: a mechanism revealed? *W Keeble, E Lundmark, H J Dargie*
- 128 Electronic pages
- 133 Images in cardiology: Spontaneous termination of ventricular fibrillation *M P Calabrò, F Luzzza, S Careri, G Oreto*
- 136 Images in cardiology: Impact of multislice CT on coronary ostial stenosis in Takayasu's arteritis *M Nakamura, M Nagano*
- 140 Electronic pages
- 143 Images in cardiology: Infectious endocarditis with an abscess around an aortic prosthesis *J-P Baguet, O Chavanon, M-A Lebrun*
- 150 Images in cardiology: Combined membrane covered and uncovered stents for coronary arteriovenous fistula associated with atherosclerotic plaque in a patient with acute myocardial infarction *Y Ahn, O Y Park, M H Jeong*
- 154 Images in cardiology: New combined treatments avoided transplantation in a child with severe pulmonary hypertension *M Beghetti, L Nicod, C Barazzo-Argiroffo, P C Rimensberger*
- 164 Images in cardiology: Ruptured plaque or embolised thrombus *J Van der Heyden, S Verheye, P Vermeersch*
- 180 From BMJ Journals
- 185 From BMJ Journals
- 194 Images in cardiology: Acute aortic dissection induced renovascular hypertension *M Shimoyama, G Igawa, M Hashimoto*
- 207 Images in cardiology: Catheter induced multiple spasms in the right iliac artery during a percutaneous coronary intervention *Y Ahn, Y J Hong, M H Jeong*
- 210 Images in cardiology: Novel imaging techniques for the differentiation of a left ventricular mass *J Timporley, S G Myerson, A R J Mitchell*
- 214 Web Top 10
- 218 Secretion of atrial natriuretic peptide in idiopathic giant atrium *M Arima, T Kanoh*



See p 218