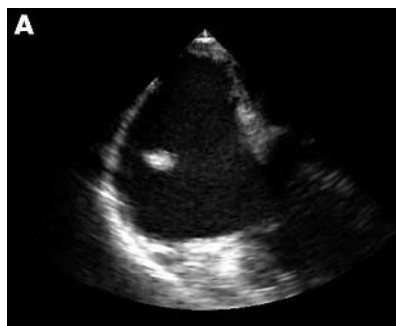


## IMAGES IN CARDIOLOGY.....

Heart 2005;91:e23 (<http://www.heartjnl.com/cgi/content/full/91/3/e23>). doi: 10.1136/hrt.2004.055103

## Identification of right atrial mass preceding interventional ASD closure

Unspecified atrial structures can be a hazard to interventional device closure of atrium secundum defects in adult patients. A 48 year old man was scheduled for device closure of a secundum atrial septal defect (ASD). On transoesophageal echocardiography an echogenic, round structure (diameter 5 mm) was detected in the centre of the right atrium (panel A). In some multi-plane transoesophageal echocardiogram views a right atrial thrombus was suspected (panel B). To clarify the aetiology of this structure a magnetic resonance imaging study was performed (panel C, transversal image). On sagittal cuts with and without gadolinium an abnormal right atrial fold (not a thrombus and not a tumour) was identified as causative (panel D, sagittal image). The ASD was then closed with an Amplatzer septal occluder.



A Eicken  
A Kühn  
M Vogt  
H Stern  
eicken@dhm.mhn.de