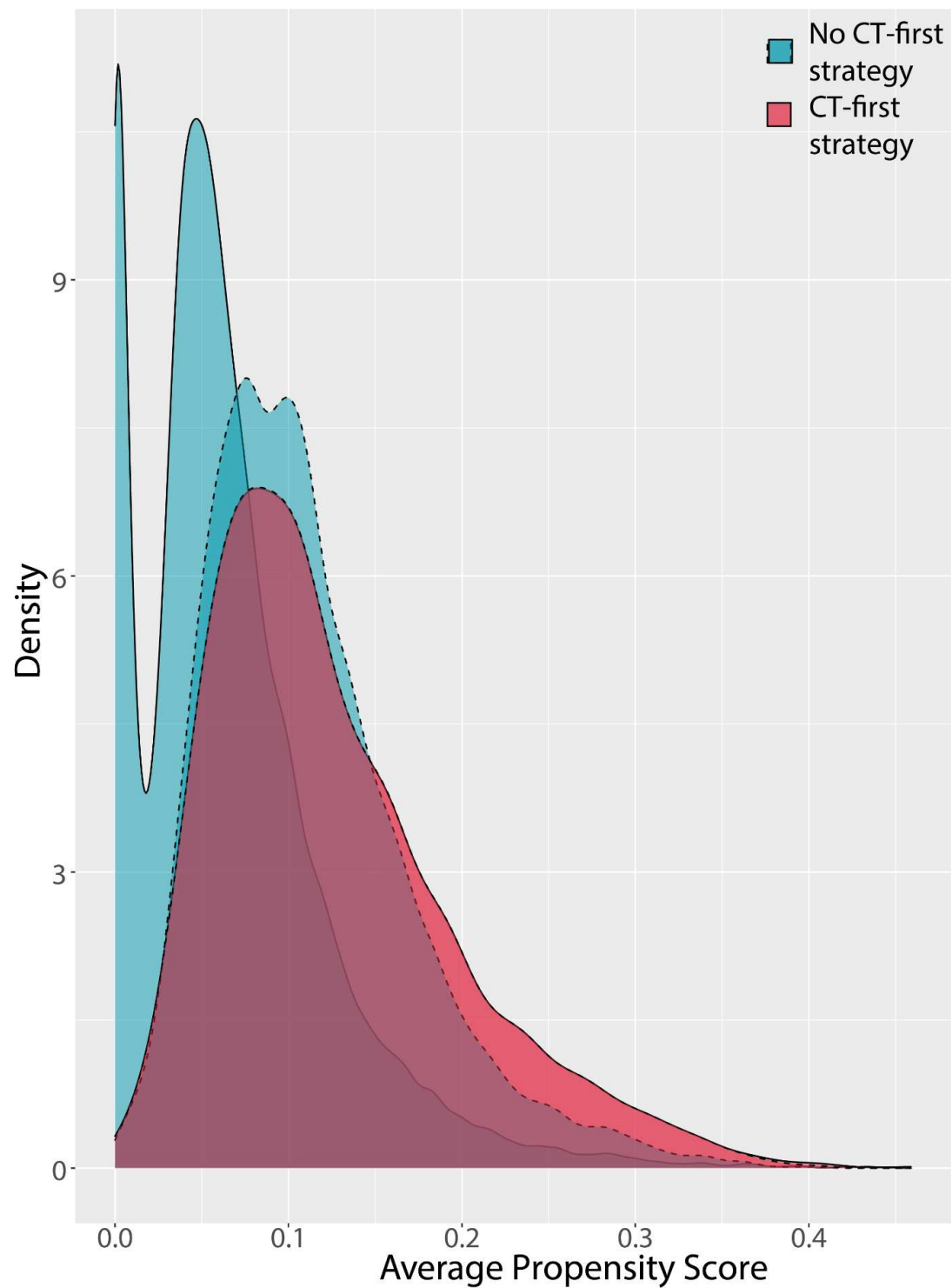


## Supplemental files

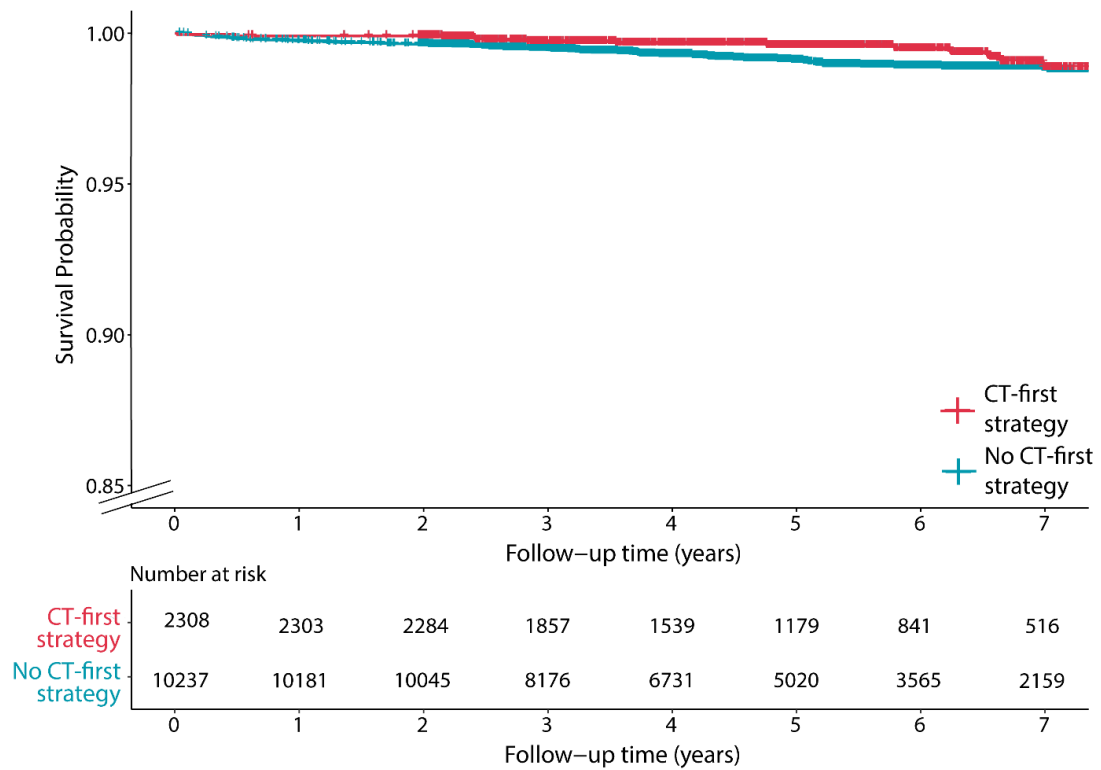
## Supplementary table 1 - Results of sensitivity analyses

	Number of patients	Without CT-first strategy	CT-first strategy	Events in patients without CT-first strategy	Events in patients with CT-first strategy	Hazard ratio all-cause mortality [95%-CI]
<b>All patients</b>	12545	10237	2308	363	43	0.51 [0.37-0.70]
<b>North</b>	5332	4337	995	154	14	0.39 [0.23-0.68]
<b>Middle</b>	7103	5809	1294	206	29	0.60 [0.40-0.88]
<b>South</b>	110	91	19	<10	<10	NA
<b>2007-2010</b>	133	108	25	<10	<10	2.18 [0.39-11.9]
<b>2011-2014</b>	6025	4900	1125	257	30	0.49 [0.34-0.72]
<b>2015-2018</b>	6387	5229	1158	102	11	0.48 [0.25-0.89]

This table shows the results of the cox regression analysis for all-cause mortality for patient's residence of different regions of the Netherlands and for the inclusion year of the patient. 'North' includes Friesland, Groningen, Drenthe, Overijssel, Flevoland and North-Holland, 'Middle' includes Zuid-Holland, Utrecht and Gelderland, 'South' includes Zeeland, Noord-Brabant and Limburg.



**Supplementary figure 1** - Distribution of the propensity score in the CT-first patients and patients without a CT-first strategy before (solid) and after (dashed) propensity score matching.



**Supplementary figure 2** - Kaplan-Meier curves for cardiovascular mortality of the CT-first and the without a CT-first study population.