

Figure S1a: Magnetic resonance images (FLAIR sequence) of the brain showing two large white matter hyperintensity lesions (arrows left), and multiple white matter hyperintensity lesions (arrows right).

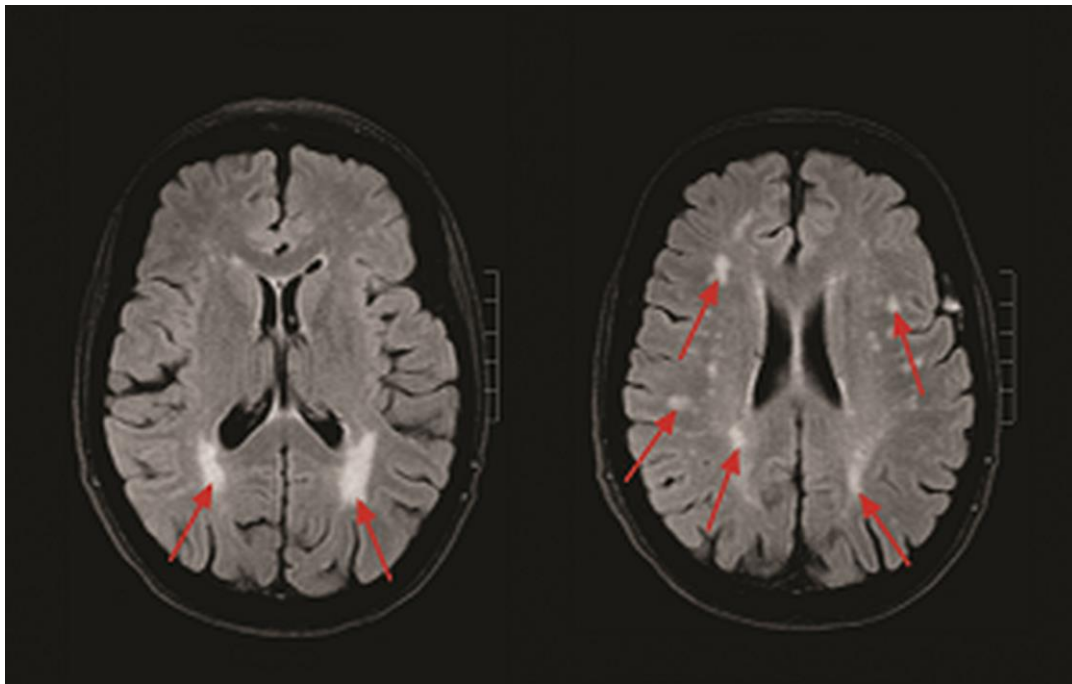


Figure S1b: V/Q SPECT in a patient with a mottled pattern on the perfusion scan of the lungs. Ventilation(A) and perfusion(B) images in axial(1), coronal(2), sagittal(3) and maximum intensity projection(4).

