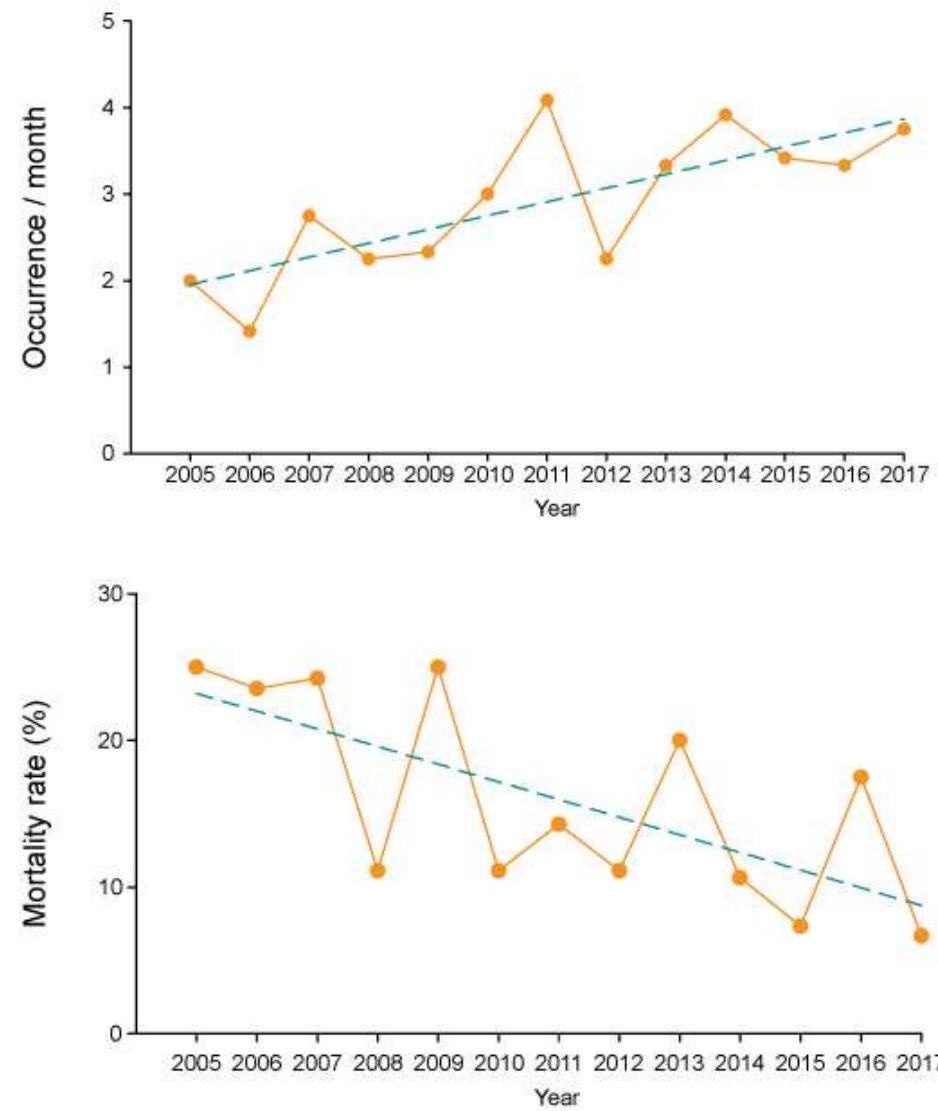
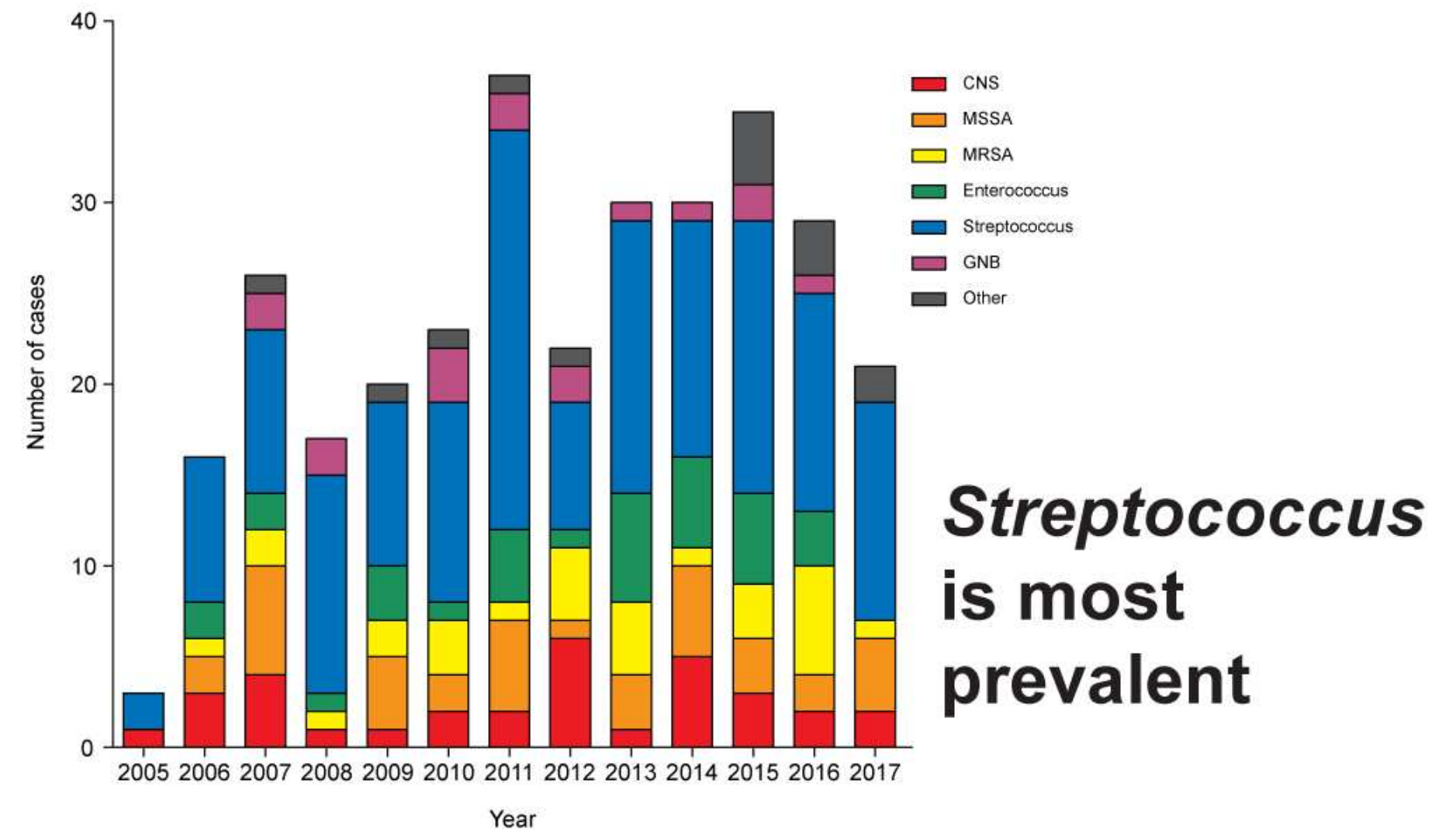


12-year retrospective observation for 419 patients with infective endocarditis



Incidence

Mortality



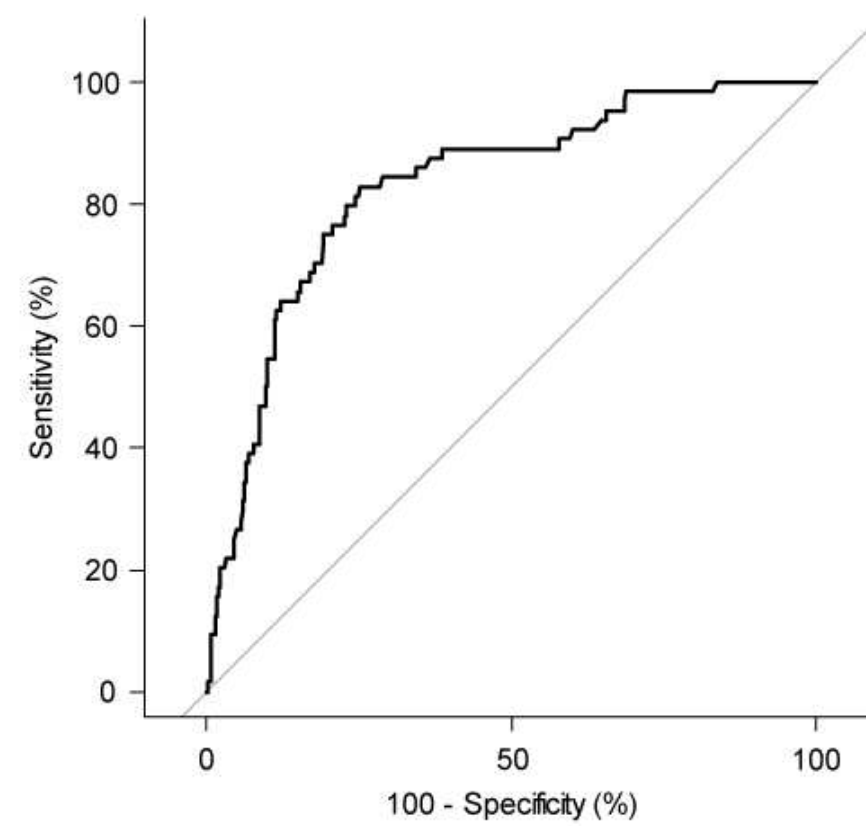
Factors associated with in-hospital mortality

In-hospital mortality

In-hospital mortality

- Staphylococcus aureus
- Aortic valve endocarditis
- Neurologic complication
- A high Charlson comorbidity index
- A high SOFA score

AUC value 83.0 by model comparison



- Surgical intervention

The protective effect of surgery remained robust after adjustment for other variables